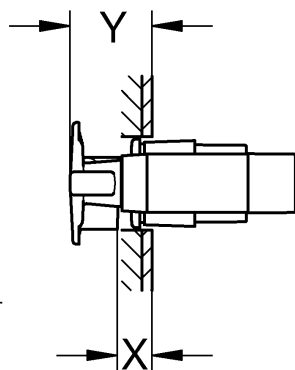
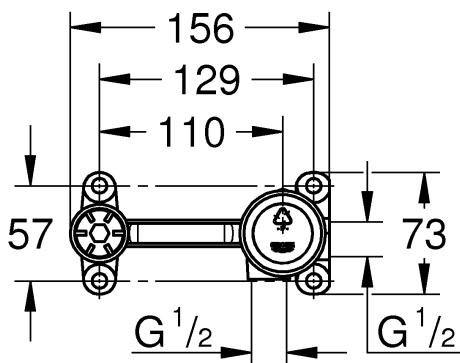


32mm

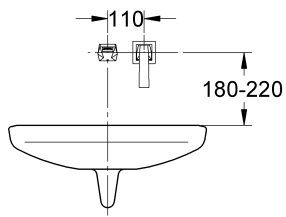
\*19 332



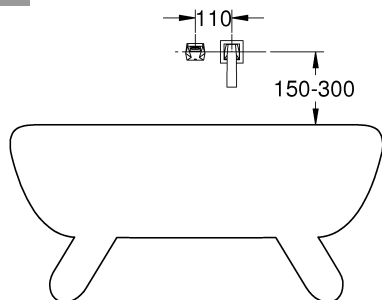
	X	Y
	14-22	43-51
	14-44	43-73



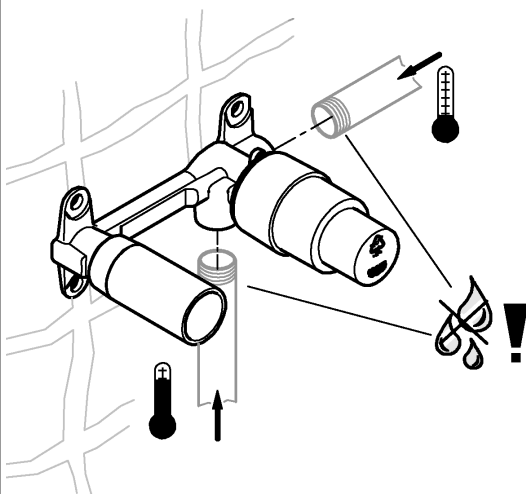
1a



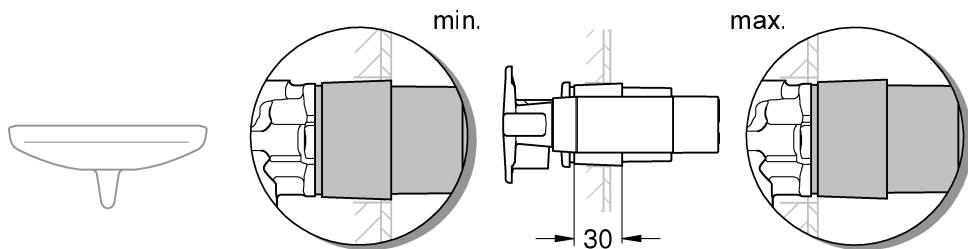
1b



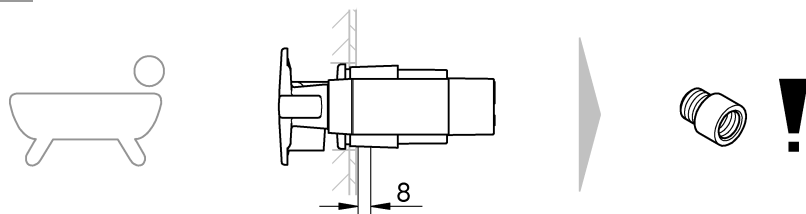
2

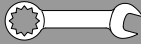


3a

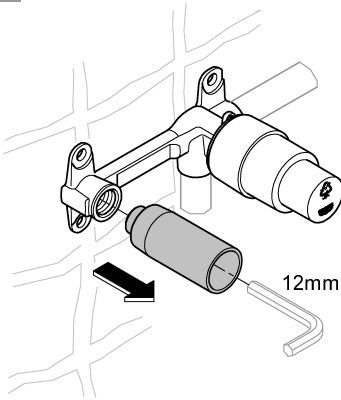


3b

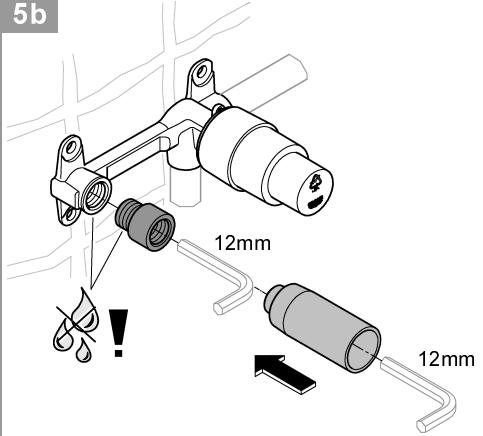




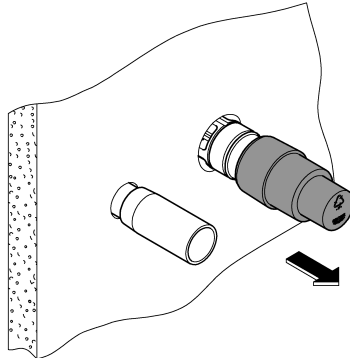
4b



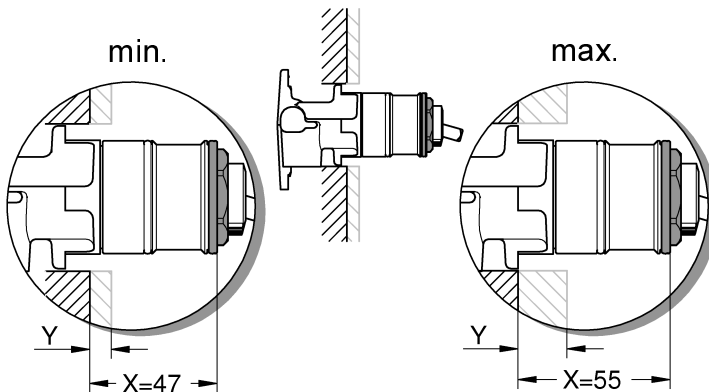
5b



6b



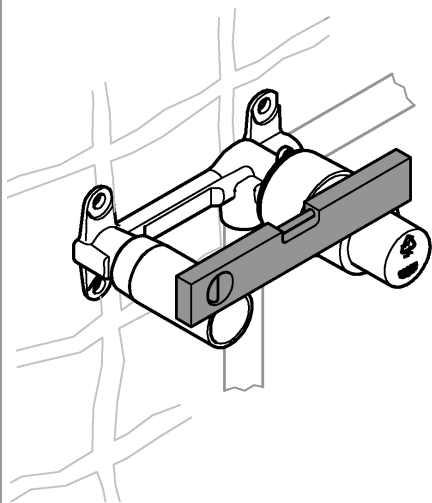
7b



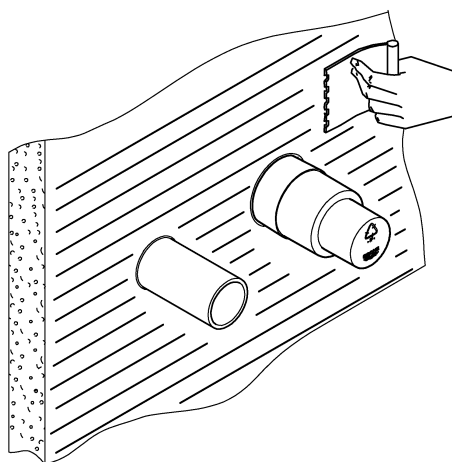
X	Y tile thickness
47	4 - 19
48	5 - 20
...	...
55	12 - 27



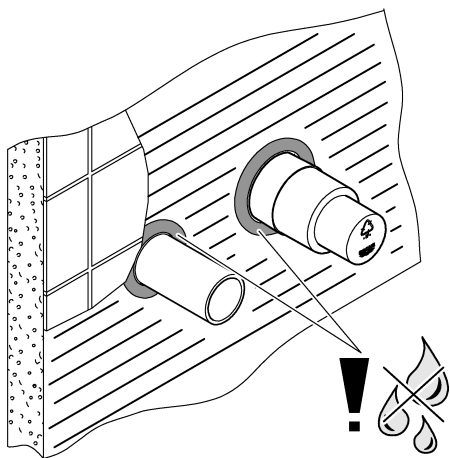
8



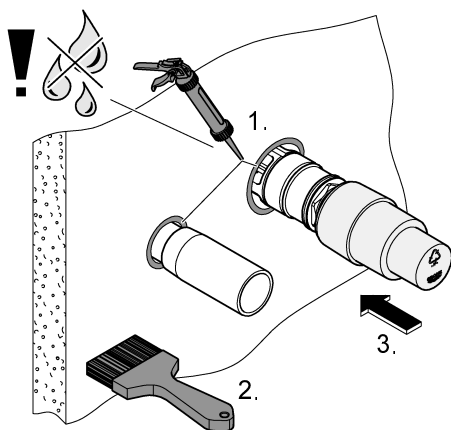
9

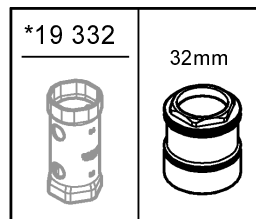
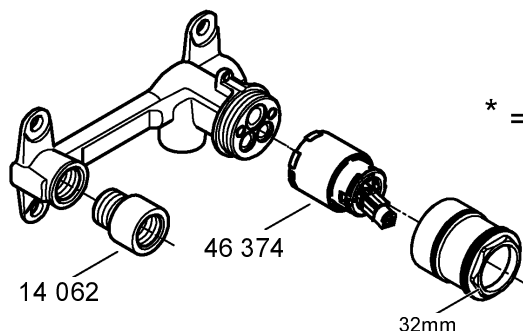


10



11





## Application

- for basin and bath
- Can be used in conjunction with: Pressurized storage heaters, thermally and hydraulically controlled instantaneous heaters. Operation with unpressurised storage heaters is **not** possible!

## Specifications

- Flow pressure
    - min. 50 kPa
    - recommended 100 - 500 kPa
  - Operating pressure
    - max. 1000 kPa
  - Test pressure
    - 1600 kPa
- If static pressure is greater than 500 kPa, fit pressure reducer.
- Avoid major pressure differences between cold and hot water supply.
- Temperature
    - Hot water inlet: maximum 70 °C
    - Recommended: (energy saving) 60 °C
  - Water connection:
    - cold - right
    - hot - from below

### Important:

**Never install shut-off valves in the outlet pipe (mixed water) downstream of any built-in mixer.**



## Installation

This product must be installed in conformance with local codes e.g. AS/NZS 3500 series of standard!

### Prepare the wall for the installation.

Prepare the holes for the wall mixer and slots for the pipes. Refer to the dimensional drawing and Fig. [1a] or [1b].

Install concealed mixer housing in wall and connect pipes, see Fig. [2].

**The cold water supply must be connected on the right (marked blue on housing) and the hot water supply from below (marked red on housing), as viewed from the operating position.**

The installation depth of the finished surface of the wall for basin installation must lie within the area of the fitting template, see Fig. [3a].

For bath installation nipple 14 062 is mandatory, see Fig. [3b]!

By using a spirit level, align the mixer horizontally, vertically and parallel to the wall.

**Flush piping system prior and after installation of fitting thoroughly (Consider EN 806)!**

**Open cold and hot-water supply and check connections for watertightness!**

**Note:** Do **not** remove the fitting templates before final installation.



**Check fitting for correct operation.**



## Maintenance

Inspect and clean all parts, replace as necessary and grease with special grease.

**Shut off cold and hot water supply!**



**Replacement parts** ( \* = special accessories).