

AQUATUNES

99.0580.031/ECN 238664/09.16

www.grohe.com

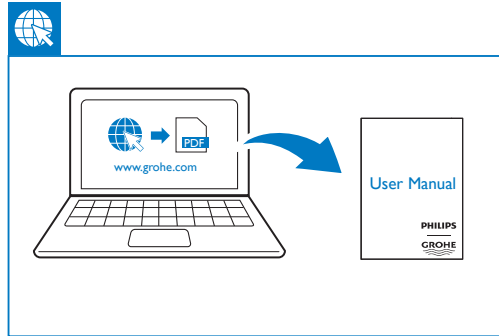
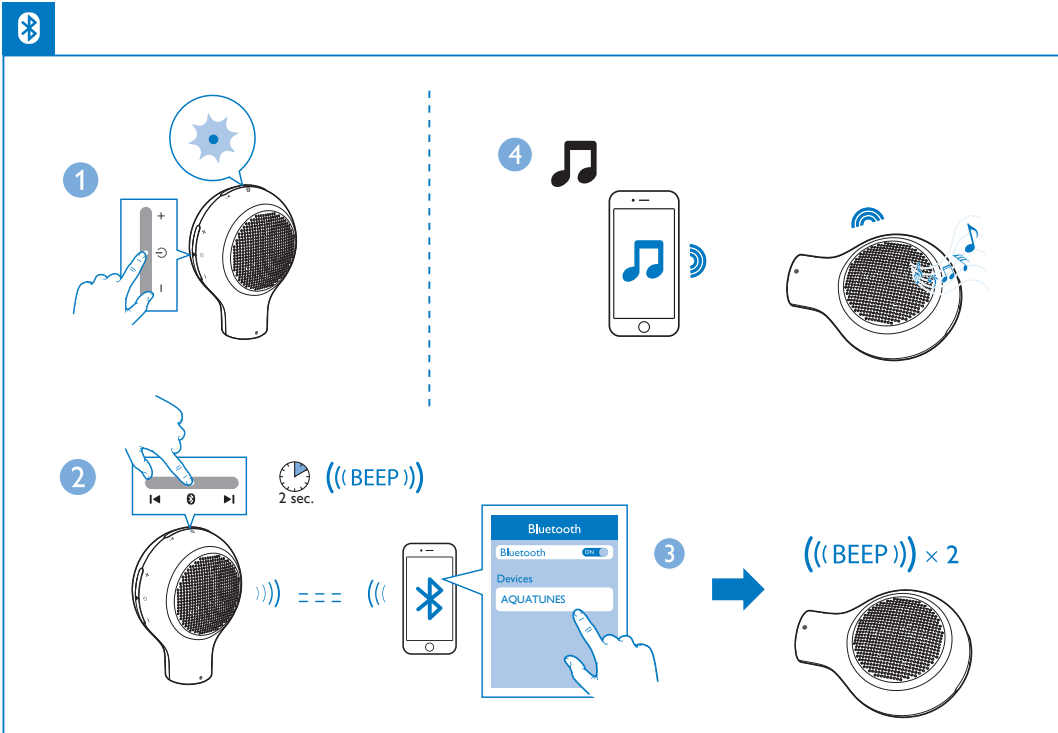
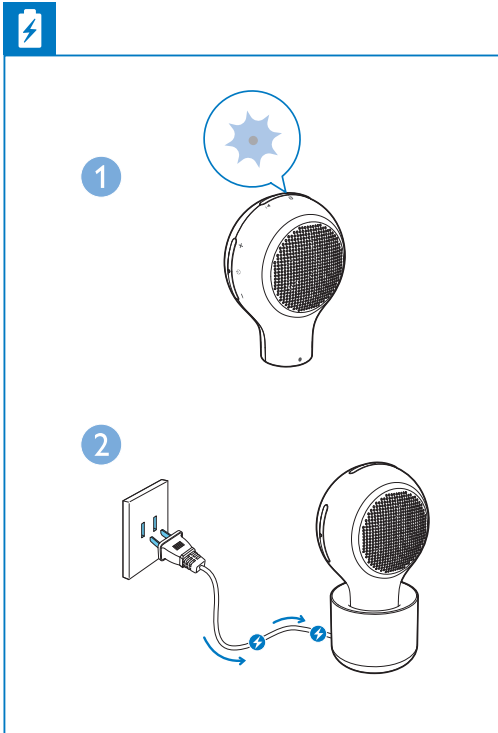
26269LV0  
GS26G/93



EN Short User Manual

ZH-CH 简明用户手册

**PHILIPS**  
**GROHE**



### EN Specifications

#### Amplifier

Rated Output Power	2 W RMS
Frequency Response	350 -16000 Hz, $\pm 3$ dB
Signal to Noise Ratio	>70 dBA

#### Speakers

Speaker Impedance	3 ohm
Speaker Driver	4 cm full range
Sensitivity	>81dB/m/W $\pm 3$ dB/m/W

#### Bluetooth

Bluetooth Version	V4.0
Bluetooth Profile	A2DP
Bluetooth Frequency Band	2.4 GHz ~ 2.48 GHz
Bluetooth Range	10 m (Free space)

#### General information

Power Supply (wireless induction charging base)	AC 220 V, 50 Hz
Built-in Battery	Li-polymer battery (3.7 V, 500 mAh)
Dimensions - Main Unit (W x H x D)	111 x 85.6 x 59.5 mm
Weight - Main Unit	0.176 kg
- Charging base	0.252 kg

### ZH-CH 规格

#### 功放器

额定输出功率	2 瓦 RMS
频率响应	350 -16000 赫兹, $\pm 3$ dB
信噪比	>70 dBA

#### 扬声器

扬声器阻抗	3 欧姆
扬声器驱动器	4 厘米全频
灵敏度	>81dB/m/W $\pm 3$ dB/m/W

#### 蓝牙

蓝牙版本	V4.0
蓝牙规格	A2DP
蓝牙频段	2.4 GHz ~ 2.48 GHz
蓝牙工作范围	10 米 (开阔空间)

#### 一般信息

电源 (无线感应充电座)	交流 220 伏, 50 赫兹
内置电池	锂聚合物电池 (3.7 伏, 500 毫安时)
尺寸 - 主装置 (宽 x 高 x 厚)	111 x 85.6 x 59.5 毫米
重量 - 主装置	0.176 千克
- 充电底座	0.252 千克

EN  
Important

- Read these instructions.
- Heed all warnings.
- Follow all instructions.
- The product may only be used in bathroom and shower. Do not use it in sauna or hot steam bath environment.
- Do not place the product near any heat sources such as radiators, heat registers, stoves, or other devices (including amplifiers) that produce heat.
- Only use attachments/accessories specified by the manufacturer.
- Do not place any sources of danger on the product, for example, lighted candles.
- Keep the product away from direct sunlight, naked flames or heat.
- During charging the battery, do not expose this product to any liquid.
- Batteries shall not be exposed to excessive heat such as sunshine, fire or the like.
- Where the plug of the charging base is used as the disconnect device, the disconnect device shall remain readily operable.
- Do not use charging base outdoors.
- The AC power plug of the charging base shall not be exposed to dripping or splashing.
- Do not place metallic objects, such as rings, on the top of charging base, as this may affect the charging process and may cause the charging base to overheat.
- Refer all servicing to qualified service personnel. Servicing is required when the product has been damaged in any way.
- Keep the charging base away from water.

- Do not place or store the charging base over or near water contained in a bathtub, washbasin, sink etc.
- Do not immerse the charging base in water or any other liquid.
- After cleaning, make sure the charging base is completely dry before you connect it to the mains.

Note

- The type plate is located on the bottom of the charging base.

Notice

Any changes or modifications made to this device that are not expressly approved by Grohe AG may void the user's authority to operate the equipment.

The speaker is designed to be waterproof in compliance with IEC60529 IPX6. The charging base (excluding AC power plug) complies with IEC60529 IPX7.

Care of the environment

Disposal of your old product

Your product is designed and manufactured with high quality materials and components, which can be recycled and reused.

Do not throw away the product with the normal household waste at the end of its life, but hand it in at an official collection point or recycling. By doing this, you help to preserve the environment.

Environmental information

Your system consists of materials which can be recycled and reused if disassembled by a specialized company. Please observe the local regulations regarding the disposal of packaging materials, exhausted batteries and old equipment.

Trademark notice

The Bluetooth® word mark and logos are registered trademarks owned by Bluetooth SIG, Inc. and any use of such marks by Gibson Innovations Limited and Grohe AG is under license. Other trademarks and trade names are those of their respective owners.

ZH-CH

重要信息

- 阅读这些说明。
- 注意所有警告。
- 遵循所有说明。
- 本产品只能在浴室和淋浴间使用。请勿在桑拿或热蒸汽浴室环境中使用本产品。
- 不要在任何热源附近放置产品，如散热器、蓄热器、炉具或其它发热设备（包括功放器）。
- 仅使用制造商指定的附件/配件。
- 不要将任何危险源放在本产品上，例如，点燃的蜡烛。
- 应让本产品远离阳光直射、明火或高温。
- 为电池充电时，请勿让本产品接触任何液体。
- 不可将电池置于高温环境，如阳光直射处、明火或类似环境。
- 如果将充电座的插头用作断路装置，则断路装置应处于随时可操作状态。
- 请勿在室外使用充电座。
- 切勿将充电座的交流电源插头置于漏水或溅水环境下。
- 请勿将戒指等金属物置于充电座顶部，否则可能会影响充电过程并可能导致充电座过热。
- 所有维修均应由合格的维修人员来执行。如果产品有任何形式的损坏，则需要维修。

- 充电座应远离水。
- 请勿将充电座放置或存放在浴缸、洗脸盆、水槽等盛水的容器上方或附近。
- 请勿将充电座浸入水中或任何其他液体中。
- 清洁后，确保充电座完全干燥，再将其连接至电源。

注

- 型号铭牌位于充电座底部。

注意

如果用户未经 Grohe AG 的明确许可而擅自对此设备进行更改或修改，则可能导致其操作该设备的授权失效。

本扬声器采用防水设计，符合 IEC60529 IPX6 标准。充电座（不含交流电源插头）符合 IEC60529 IPX7 标准。

爱护环境

弃置旧产品  
本产品采用可回收利用的高性能材料和组件制造而成。弃置产品时，请不要将其与一般生活垃圾一同丢弃，应将其交给政府指定的回收中心或回收。这样做有利于环保。

环境信息

本系统的所有材料均可回收和再利用（如果由专业公司拆卸）。请遵守当地有关包装材料、废电池和旧设备的处理的规定。

商标声明

蓝牙® 字样和徽标均为 Bluetooth SIG, Inc. 所有的注册商标，Gibson Innovations Limited 和 Grohe AG 对此类字样和徽标的任何使用均已获得许可。其它商标和商品名称均属于它们各自的所有者。

产品中有害物质的名称及含量 Names and Contents of Hazardous Substances						
部件名称 Name of the Parts	有害物质 Hazardous Substances					
	铅 (Pb, Lead)	汞 (Hg, Mercury)	镉 (Cd, cadmium)	六价铬 (Chromium (VI))	多溴联苯 (PBB)	多溴二苯醚 (PBDE)
Housing 外壳	O	O	O	O	O	O
Loudspeakers 喇叭单元	O	O	O	O	O	O
PWBs 电路板组件	X	O	O	O	O	O
Accessories (cables) 附件 (电源线)	X	O	O	O	O	O

本表格依据 SJ/T 11364 的规定编制。  
The table is compiled according to SJ/T 11364.  
O: 表示该有害物质在该部件所有均质材料中的含量均在 GB/T 26572 标准规定的限量要求以下。  
O: Indicates that this hazardous substance contained in all of the homogeneous materials for this part is below the limit requirement in GB/T 26572.  
×: 表示该有害物质至少在该部件的某一均质材料中的含量超出 GB/T 26572 标准规定的限量要求。  
X: Indicates that this hazardous substance contained in at least one of the homogeneous materials used for this part is above the limit requirement in GB/T 26572.

10 环保使用期限 Environmental Protection Use Period

这标志表示的期间 (10 年) 是电子电气产品中有有害物质在正常使用的条件下不会发生外泄或突变，电子电气产品用户使用该电子电气产品不会对环境造成严重污染或对其人身、财产造成严重损害的期限。

This logo refers to the period ( 10 years ) during which the hazardous substances in electronic and electrical products will not leak or mutate so that the use of these [substances] will not result in any severe environmental pollution, any bodily injury or damage to any assets.

Pure Freude an Wasser

GROHE

www.grohe.com  
2014/03/21

EST +49 571 3989 333  
impressum@grohe.de

F +33 1 49972900  
marketing-fr@grohe.com

AUS Argnt Sydney  
+ (02) 8394 5800  
Argnt Melbourne  
+ (03) 9682 1231

B +32 18 230660  
info.be@grohe.com

BB +359 2 9719959  
grohe-bulgaria@grohe.com

CAU +99 412 497 09 74  
info-az@grohe.com

CDN +1 888 6447643  
info@grohe.ca

CH +41 448777300  
info@grohe.ch

CN +86 21 63758878

CY +357 22 465200  
info@grome.com

CZ +420 277 004 190  
grohe-cz@grohe.com

DK +45 44 656800  
grohe@grohe.dk

E +34 93 3368850  
grohe@grohe.es

EST +372 6616354  
grohe@grohe.ee

F +33 1 49972900  
marketing-fr@grohe.com

FIN +358 10 8201100  
teknocalor@teknocalor.fi

GB +44 871 200 3414  
info-uk@grohe.com

GR +30 210 2712908  
nsapountzis@ath.forthnet.gr

H +36 1 2388045  
info-hu@grohe.com

HK +852 2969 7067  
info@grohe.hk

I +39 2 959401  
info-it@grohe.com

IND +91 124 4933000  
customercare.in@grohe.com

IS +354 515 4000  
joni@byko.is

J +81 3 32869730  
info@grohe.co.jp

DK +45 44 656800  
grohe@grohe.dk

E +34 93 3368850  
grohe@grohe.es

EST +372 6616354  
grohe@grohe.ee

LV +372 6616354  
grohe@grohe.ee

MAL +1 800 80 6570  
info-singapore@grohe.com

N +47 22 072070  
grohe@grohe.no

NL +31 79 3680133  
vrage-nl@grohe.com

NZ +64 373 4324

P +351 234 529620  
commercial-pt@grohe.com

PL +48 22 5432640  
biuro@grohe.com.pl

RI +62 21 2358 4751  
info-singapore@grohe.com

RO +40 21 2125050  
info-ro@grohe.com

IS +82 2 959 0790  
info-singapore@grohe.com

RP +63 2 8041617

RUS +7 495 9819510  
info@grohe.ru

S +46 771 141314  
grohe@grohe.se

SGP +65 6 7385585  
info-singapore@grohe.com

SK +420 277 004 190  
grohe-cz@grohe.com

T +96 2610 3685  
info-singapore@grohe.com

TR +90 216 441 23 70  
GroheTurkey@grome.com

UA +38 44 5375273  
info-ua@grohe.com

USA +1 800 4447643  
us-customer-service@grohe.com

VN +84 8 5413 6840  
info-singapore@grohe.com

AL BIH HR KS ME MK SLO SRB +385 1 2911470  
adria-hr@grohe.com

Eastern Mediterranean, Middle East - Africa Area Sales Office: +357 22 465200  
info@grome.com

IR OM UAE YEM +971 4 3318070  
grohedubai@grohe.com

Far East Area Sales Office: +65 6311 3600  
info@grohe.com.sg

PHILIPS  
GROHE

This product is manufactured by Gibson Innovations Ltd. for Grohe AG. Grohe AG is the warrantor in relation to the product.