



Pony Testing International Group

报告编号(Report ID): I040130219

锂电池 UN38.3 测试报告

Lithium Battery UN38.3 Test Report



Sample Description
& Model

Cylindrical Lithium-ion Battery F[®]18650 2600

Applicant

Manufacturer

P O N Y 谱尼测试
Pony Testing International Group

www.ponytest.com

No.: I04013021921D

Code: u9v3ahsko





Pony Testing International Group

Report ID: I04013021

Page 2 of 11

The original report which report No. is I04013021 be replaced by this report, and it will be canceled immediately and doesn't have any legal validity. Please compliance with this report.

January 7, 2015

Notes:

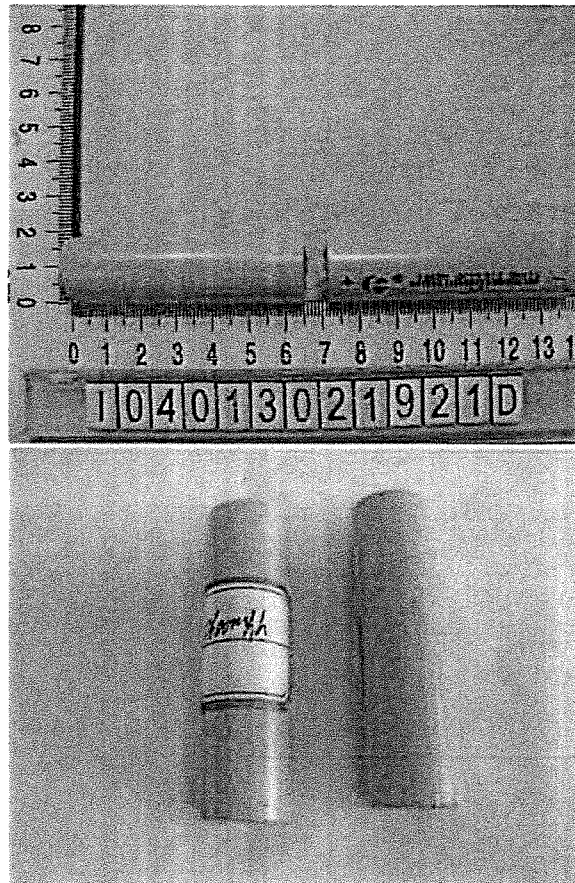
N1~N10: Cells at first cycle in fully charged states;

N11~N15: Cells at first cycle at 50% of the design rated capacity;

N16~N25: Cells at first cycle in fully discharged states;

C1~C10: Cells after 50 cycles ending in fully discharged states.

V、PHOTO OF THE SAMPLE



Authenticate the photo on original report only

www.ponytest.com

Hotline 400-819-5688

PONY 谱尼测试
Pony Testing International Group

北京分公司: 010-59013021	上海分公司: 021-58515998	广州分公司: 020-86831999	深圳分公司: 0755-29850689
天津分公司: 022-59300650	武汉分公司: 027-84665083	重庆分公司: 023-88718271	西安分公司: 029-89224316
成都分公司: 028-27560736	郑州分公司: 0371-67350670	青岛分公司: 0532-88721909	烟台分公司: 0535-8990127



Pony Testing International Group

Report ID: I0401302

Page 3 of 11

VI. TEST METHOD

Tests T.1 to T.5 shall be conducted in sequence on the same cell or battery. Tests T.6 and T.8 shall be conducted using not otherwise tested cells or batteries. Test T.7 may be conducted using undamaged batteries previously used in tests T.1 to T.5 for purposes of testing on cycled batteries.

In order to quantify the mass loss, the following procedure is provided:

$$\text{Mass loss(\%)} = (M_1 - M_2) / M_1 \times 100$$

Where M_1 is the mass before the test and M_2 is the mass after the test. When mass loss does not exceed the values in Table blow, it shall be considered as "no mass loss".

Mass M of cell or battery	Mass loss limit
$M < 1g$	0.5%
$1g \leq M \leq 75g$	0.2%
$M > 75g$	0.1%

T.1 Altitude simulation

Test cells and batteries shall be stored at a pressure of 11.6 kPa or less for at least six hours at ambient temperature ($20 \pm 5 \text{ }^\circ\text{C}$).

Cells and batteries meet this requirement if there is no leakage, no venting, no disassembly, no rupture and no fire and if the open circuit voltage of each test cell or battery after testing is not less than 90% of its voltage immediately prior to this procedure. The requirement relating to voltage is not applicable to test cells and batteries at fully discharged states.

T.2 Thermal test

Test cells and batteries are to be stored for at least six hours at a test temperature equal to $72 \pm 2 \text{ }^\circ\text{C}$, followed by storage for at least six hours at a test temperature equal to $-40 \pm 2 \text{ }^\circ\text{C}$. The maximum time interval between test temperature extremes is 30 minutes. This procedure is to be repeated until 10 total cycles are complete, after which all test cells and batteries are to be stored for 24 hours at ambient temperature ($20 \pm 5 \text{ }^\circ\text{C}$). For large cells and batteries the duration of exposure to the test temperature extremes should be at least 12 hours.

Cells and batteries meet this requirement if there is no leakage, no venting, no disassembly, no rupture and no fire and if the open circuit voltage of each test cell or battery after testing is not less than 90% of its voltage immediately prior to this procedure. The requirement relating to voltage is not applicable to test cells and batteries at fully discharged states.

www.ponytest.com ©Hotline 400-819-5688

中国总部: 010-52011111 | 美国总部: 01415-851-6908 | 日本总部: 021-5841-1999 | 欧洲总部: 00755-2658688
 上海分公司: 021-52011111 | 北京分公司: 010-52011111 | 深圳分公司: 0755-2658688 | 广州分公司: 020-2658688
 天津分公司: 022-27360730 | 武汉分公司: 0431-69320670 | 成都分公司: 028-71187219096 | 西安分公司: 027-59673121



Pony Testing International Group

Report ID: I040130

Page 4 of 11

T.3 Vibration

Cells and batteries are firmly secured to the platform of the vibration machine without distorting the cells in such a manner as to faithfully transmit the vibration. The vibration shall be a sinusoidal waveform with a logarithmic sweep between 7 Hz and 200 Hz and back to 7 Hz traversed in 15 minutes. This cycle shall be repeated 12 times for a total of 3 hours for each of three mutually perpendicular mounting positions of the cell. One of the directions of vibration must be perpendicular to the terminal face.

The logarithmic frequency sweep shall differ for cells and batteries with a gross mass of not more than 12 kg (cells and small batteries), and for batteries with a gross mass of more than 12 kg (large batteries).

For cells and small batteries: from 7 Hz a peak acceleration of 1 g_n is maintained until 18 Hz is reached. The amplitude is then maintained at 0.8 mm (1.6 mm total excursion) and the frequency increased until a peak acceleration of 8 g_n occurs (approximately 50 Hz).

A peak acceleration of 8 g_n is then maintained until the frequency is increased to 200 Hz.

For large batteries: from 7 Hz to a peak acceleration of 1 g_n is maintained until 18 Hz is reached. The amplitude is then maintained at 0.8 mm (1.6 mm total excursion) and the frequency increased until a peak acceleration of 2 g_n occurs (approximately 25 Hz). A peak acceleration of 2 g_n is then maintained until the frequency is increased to 200 Hz.

Cells and batteries meet this requirement if there is no leakage, no venting, no disassembly, no rupture and no fire during the test and after the test and if the open circuit voltage of each test cell or battery directly after testing in its third perpendicular mounting position is not less than 90% of its voltage immediately prior to this procedure. The requirement relating to voltage is not applicable to test cells and batteries at fully discharged states.

T.4 Shock

Test cells and batteries shall be secured to the testing machine by means of a rigid mount which will support all mounting surfaces of each test battery. Each cell or battery shall be subjected to a half-sine shock of peak acceleration of 150 g_n and pulse duration of 6 milliseconds. Each cell or battery shall be subjected to three shocks in the positive direction followed by three shocks in the negative direction of three mutually perpendicular mounting positions of the cell or battery for a total of 18 shocks.

However, large cells and large batteries shall be subjected to a half-sine shock of peak acceleration of 50 g_n and pulse duration of 11 milliseconds. Each cell or battery is subjected to three shocks in the positive direction followed by three shocks in the negative direction of each of three mutually perpendicular mounting positions of the cell for a total of 18 shocks.

www.ponytest.com

Hotline 400-819-5688

PONY 谱尼测试
Pony Testing International Group

北京分公司: 010-57001010	杭州分公司: 0571-88150908	上海分公司: 021-64881999	深圳分公司: 0755-26959969
广州分公司: 0532-87098866	武汉分公司: 0411-84650820	天津分公司: 0574-87736499	成都分公司: 020-89124310
南京分公司: 0221-27360730	西安分公司: 0971-69189670	青岛分公司: 0571-87219096	大连分公司: 021-43997127



Pony Testing International Group

Report ID: I0401302#

Page 5 of 11

Cells and batteries meet this requirement if there is no leakage, no venting, no disassembly, no rupture and no fire and if the open circuit voltage of each test cell or battery after testing is not less than 90% of its voltage immediately prior to this procedure. The requirement relating to voltage is not applicable to test cells and batteries at fully discharged states.

T.5 External short circuit

The cell or battery to be tested shall be temperature stabilized so that its external case temperature reaches 55 ± 2 °C and then the cell or battery shall be subjected to a short circuit condition with a total external resistance of less than 0.1 ohm at 55 ± 2 °C. This short circuit condition is continued for at least one hour after the cell or battery external case temperature has returned to 55 ± 2 °C.

Cells and batteries meet this requirement if their external temperature does not exceed 170 °C and there is no disassembly, no rupture and no fire during the test and within six hours after the test.

T.6 Impact / Crush

Impact (applicable to cylindrical cells not less than 18 mm in diameter)

The sample cell or component cell is to be placed on a flat smooth surface. A 15.8 mm \pm 0.1mm diameter, at least 6 cm long, or the longest dimension of the cell, whichever is greater, Type 316 stainless steel bar is to be placed across the centre of the sample. A 9.1 kg \pm 0.1 kg mass is to be dropped from a height of 61 \pm 2.5 cm at the intersection of the bar and sample in a controlled manner using a near frictionless, vertical sliding track or channel with minimal drag on the falling mass. The vertical track or channel used to guide the falling mass shall be oriented 90 degrees from the horizontal supporting surface.

The test sample is to be impacted with its longitudinal axis parallel to the flat surface and perpendicular to the longitudinal axis of the 15.8 mm \pm 0.1mm diameter curved surface lying across the centre of the test sample. Each sample is to be subjected to only a single impact.

Crush (applicable to prismatic, pouch, coin/button cells and cylindrical cells less than 18 mm in diameter)

A cell or component cell is to be crushed between two flat surfaces. The crushing is to be gradual with a speed of approximately 1.5 cm/s at the first point of contact. The crushing is to be continued until the first of the three options below is reached.

- (a) The applied force reaches 13 kN \pm 0.78 kN;
- (b) The voltage of the cell drops by at least 100 mV; or
- (c) The cell is deformed by 50% or more of its original thickness.

Once the maximum pressure has been obtained, the voltage drops by 100 mV or more, or the cell is deformed by at least 50% of its original thickness, the pressure shall be released.

www.ponytest.com ☎Hotline 400-819-5688

PONY 谱尼测试
Pony Testing International Group

北京分公司: 010-85013116	天津分公司: 022-58518668	上海分公司: 021-62891998	广州分公司: 020-82552609
深圳分公司: 0755-88706796	武汉分公司: 027-85650928	成都分公司: 028-87736499	重庆分公司: 023-89224110
南京分公司: 025-12360030	烟台分公司: 0531-89389620	青岛分公司: 0532-87219096	西安分公司: 029-8992127



Pony Testing International Group

Report ID: I04013021

Page 6 of 11

A prismatic or pouch cell shall be crushed by applying the force to the widest side. A button/coin cell shall be crushed by applying the force on its flat surfaces. For cylindrical cells, the crush force shall be applied perpendicular to the longitudinal axis.

Each test cell or component cell is to be subjected to one crush only. The test sample shall be observed for a further 6 h. The test shall be conducted using test cells or component cells that have not previously been subjected to other tests.

Cells and component cells meet this requirement if their external temperature does not exceed 170 °C and there is no disassembly and no fire during the test and within six hours after this test.

T.7 Overcharge

The charge current shall be twice the manufacturer's recommended maximum continuous charge current. The minimum voltage of the test shall be as follows:

- (a) When the manufacturer's recommended charge voltage is not more than 18V, the minimum voltage of the test shall be the lesser of two times the maximum charge voltage of the battery or 22V.
- (b) When the manufacturer's recommended charge voltage is more than 18V, the minimum voltage of the test shall be 1.2 times the maximum charge voltage.

Tests are to be conducted at ambient temperature; the duration of the test shall be 24 hours.

Rechargeable batteries meet this requirement if there is no disassembly and no fire during the test and within seven days after the test.

T.8 Forced discharge

Each cell shall be forced discharged at ambient temperature by connecting it in series with a 12V D.C. power supply at an initial current equal to the maximum discharge current specified by the manufacturer.

The specified discharge current is to be obtained by connecting a resistive load of the appropriate size and rating in series with the test cell. Each cell shall be forced discharged for a time interval (in hours) equal to its rated capacity divided by the initial test current (in ampere).

Primary or rechargeable cells meet this requirement if there is no disassembly and no fire during the test and within seven days after the test.

www.ponytest.com ☎Hotline 400-819-5688

北京分公司: 010-82158116	天津分公司: 0431-88150988	上海分公司: 021-64881969	深圳分公司: 0755-26080669
广州分公司: 0832188706896	武汉分公司: 0411-84680870	宁波分公司: 0574-87776499	成都分公司: 020189224310
长沙分公司: 022-27460730	烟台分公司: 0371-69330670	青岛分公司: 0531-87219096	杭州分公司: 021-63569712

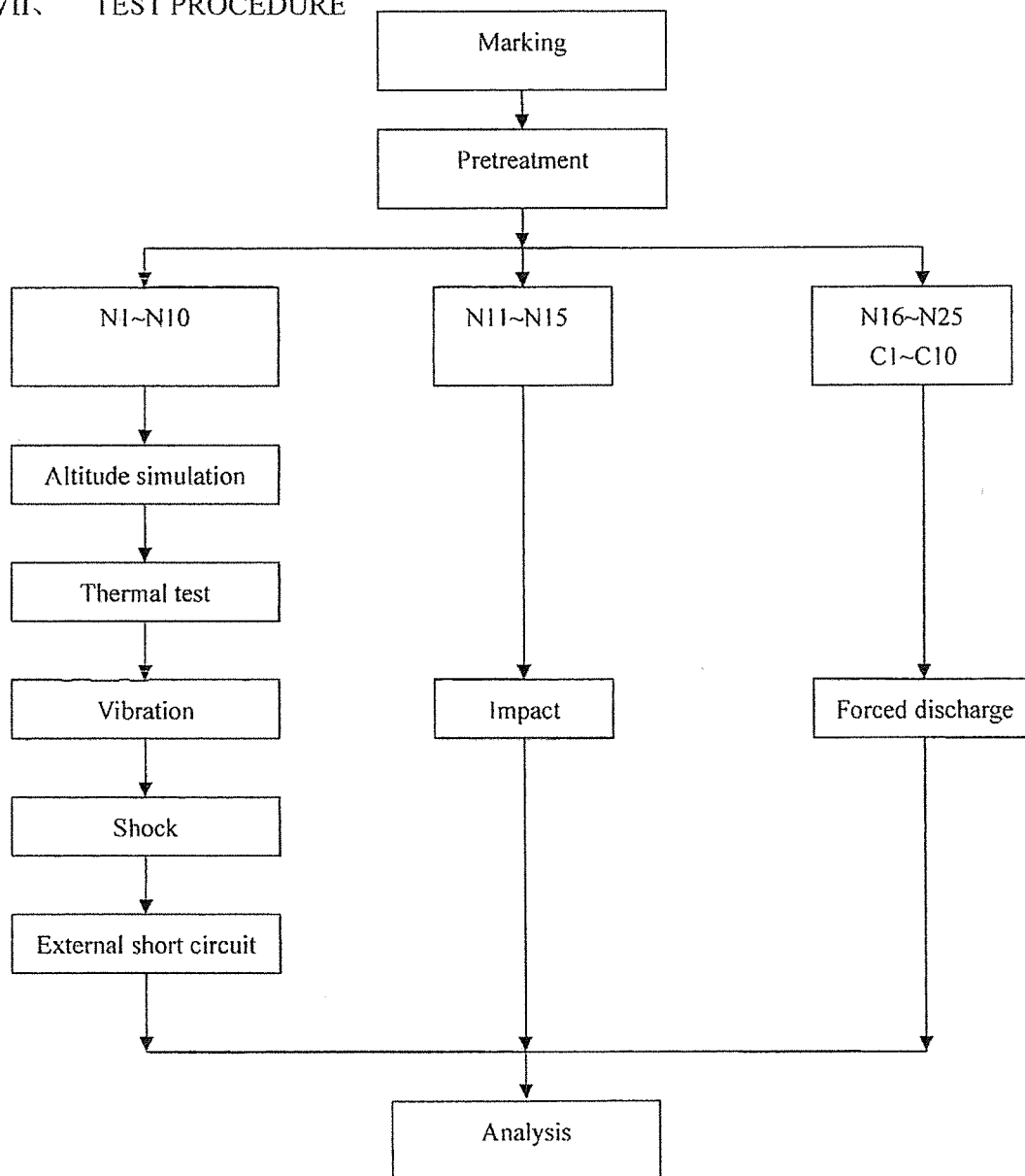


Pony Testing International Group

Report ID: I0401302

Page 7 of 11

VII、 TEST PROCEDURE



VIII、 TEST APPARATUS

IE-0121 Rechargeable battery test system

IE-0294 DC regulated power supply

IE-0434 Vacuum chamber

IE-0081 Battery impact test instrument

IE-0219 Temperature circulation chamber

IE-0125 Electronic balance

IE-0128 Vibration test instrument

IE-0090 Digital multimeter

IE-0287 Shock test instrument

IE-0185 Thermoelectric pair

IE-0281 Battery anti-explosion chamber

www.ponytest.com

Hotline 400-819-5688



Pony Testing International Group

Report ID: I0401302

Page 8 of 11

IX、 DATA

1. Altitude simulation

No.	Pre-test		After test		Mass loss (%)	Voltage loss (%)	Whether leakage, venting, disassembly, rupture, fire (Y/N)
	Mass (g)	Voltage (V)	Mass (g)	Voltage (V)			
N1	45.042	4.17	45.042	4.17	0.000	0.00	N
N2	45.563	4.17	45.563	4.17	0.000	0.00	N
N3	45.239	4.17	45.239	4.17	0.000	0.00	N
N4	45.527	4.17	45.527	4.17	0.000	0.00	N
N5	46.234	4.17	46.234	4.17	0.000	0.00	N
N6	45.886	4.17	45.886	4.17	0.000	0.00	N
N7	46.255	4.17	46.254	4.17	0.002	0.00	N
N8	45.762	4.17	45.762	4.17	0.000	0.00	N
N9	46.106	4.17	46.106	4.17	0.000	0.00	N
N10	46.144	4.17	46.144	4.17	0.000	0.00	N

2. Thermal test

No.	Pre-test		After test		Mass loss (%)	Voltage loss (%)	Whether leakage, venting, disassembly, rupture, fire (Y/N)
	Mass (g)	Voltage (V)	Mass (g)	Voltage (V)			
N1	45.042	4.17	45.030	4.12	0.027	1.20	N
N2	45.563	4.17	45.550	4.12	0.029	1.20	N
N3	45.239	4.17	45.226	4.12	0.029	1.20	N
N4	45.527	4.17	45.515	4.12	0.026	1.20	N
N5	46.234	4.17	46.219	4.13	0.032	0.96	N
N6	45.886	4.17	45.872	4.12	0.031	1.20	N
N7	46.254	4.17	46.242	4.13	0.026	0.96	N
N8	45.762	4.17	45.749	4.12	0.028	1.20	N
N9	46.106	4.17	46.094	4.12	0.026	1.20	N
N10	46.144	4.17	46.129	4.12	0.033	1.20	N

www.ponytest.com ☎Hotline 400-819-5688



Pony Testing International Group

Report ID: 10401302

Page 9 of 11

3. Vibration

No.	Pre-test		After test		Mass loss (%)	Voltage loss (%)	Whether leakage, venting, disassembly, rupture, fire (Y/N)
	Mass (g)	Voltage (V)	Mass (g)	Voltage (V)			
N1	45.030	4.12	45.030	4.12	0.000	0.00	N
N2	45.550	4.12	45.550	4.12	0.000	0.00	N
N3	45.226	4.12	45.225	4.12	0.002	0.00	N
N4	45.515	4.12	45.515	4.12	0.000	0.00	N
N5	46.219	4.13	46.218	4.12	0.002	0.24	N
N6	45.872	4.12	45.872	4.12	0.000	0.00	N
N7	46.242	4.13	46.242	4.13	0.000	0.00	N
N8	45.749	4.12	45.748	4.11	0.002	0.24	N
N9	46.094	4.12	46.094	4.12	0.000	0.00	N
N10	46.129	4.12	46.129	4.12	0.000	0.00	N

4. Shock

No.	Pre-test		After test		Mass loss (%)	Voltage loss (%)	Whether leakage, venting, disassembly, rupture, fire (Y/N)
	Mass (g)	Voltage (V)	Mass (g)	Voltage (V)			
N1	45.030	4.12	45.030	4.12	0.000	0.00	N
N2	45.550	4.12	45.549	4.12	0.002	0.00	N
N3	45.225	4.12	45.225	4.12	0.000	0.00	N
N4	45.515	4.12	45.515	4.12	0.000	0.00	N
N5	46.218	4.12	46.218	4.12	0.000	0.00	N
N6	45.872	4.12	45.871	4.12	0.002	0.00	N
N7	46.242	4.13	46.242	4.12	0.000	0.24	N
N8	45.748	4.11	45.748	4.11	0.000	0.00	N
N9	46.094	4.12	46.094	4.12	0.000	0.00	N
N10	46.129	4.12	46.129	4.12	0.000	0.00	N

www.ponytest.com ☎Hotline 400-819-5688



Pony Testing International Group

Report ID: I04013021#

Page 10 of 11

5. External short circuit

No.	Peak temperature (°C)	Whether disassembly, rupture, fire (Y/N)
N1	98	N
N2	95	N
N3	99	N
N4	91	N
N5	97	N
N6	89	N
N7	96	N
N8	92	N
N9	98	N
N10	99	N

6. Impact

No.	Peak temperature (°C)	Whether disassembly, fire (Y/N)
N11	98	N
N12	96	N
N13	95	N
N14	97	N
N15	93	N

7. Overcharge

N/A

www.ponytest.com Hotline 400-819-5688



Pony Testing International Group

8. Forced discharge

No.	Whether disassembly, fire (Y/N)
N16	N
N17	N
N18	N
N19	N
N20	N
N21	N
N22	N
N23	N
N24	N
N25	N
C1	N
C2	N
C3	N
C4	N
C5	N
C6	N
C7	N
C8	N
C9	N
C10	N

*** End of report ***