

GROHE CONTENT

Tailor-Made Showering	4
Important Details	8
Product overview	12
GROHE Shower Configurations	
M	24
L	32
XL	40
Recommended Installation Heights	50

SHOWER CONFIGURATION M

24 SHOWER CONFIGURATION L

32



SHOWER CONFIGURATION XL

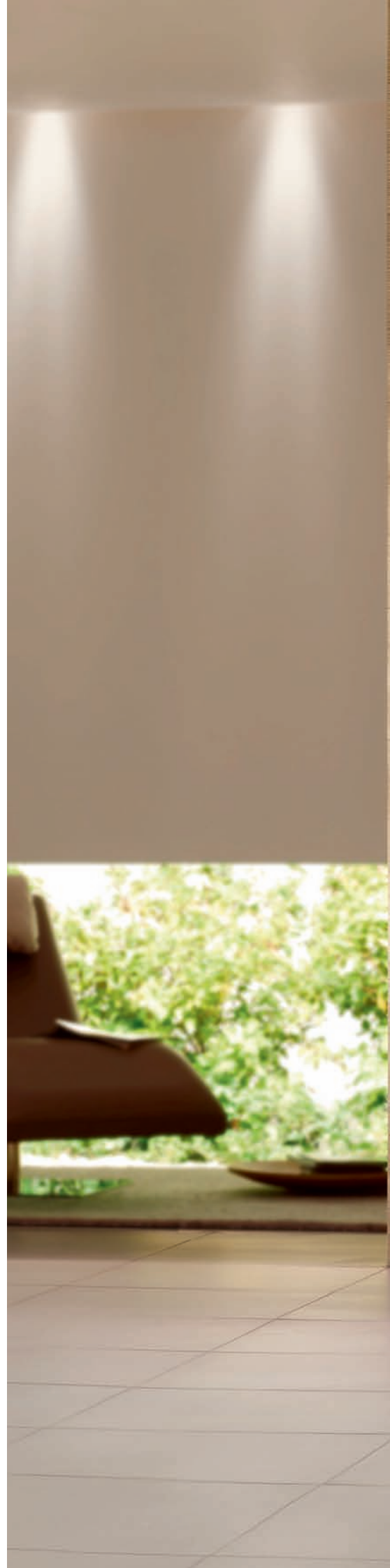
40



GROHE SPA® TAILOR-MADE SHOWERING

Flexibility for your GROHE SPA®. The bathroom was once merely functional. Today, it's a refuge, a place to refresh and renew. It's a sanctuary from the outside world; a heaven of indulgence. Bathrooms are larger; different zones are now defined. Each is an investment in your health and wellbeing, a place where daily rituals become sensational experiences.

With GROHE SPA®, your home sanctuary can be completely tailor-made – from the basin and bathtub, to the head and hand showers and handles, to the thermostats and light, and the sound and steam. Everything can be made your way. Even down to GROHE Blue® filtered water.







STIMULATE YOUR SENSES

GROHE SPA® F-digital Deluxe: Lights, music, steam...
stimulation for all the senses. It's time to transform your bathroom into a luxurious and inspiring home spa.

With the power to fill your shower cabin with different coloured lights, your favourite music of the moment and cleansing steam, F-digital Deluxe is designed to soothe or stimulate all your senses. It is perfect for all your moods. At the touch of a button!

With GROHE SPA® F-digital Deluxe you know your home is a sanctuary, complete with a sophisticated oasis of wellbeing you can control with your fingertips.

Thanks to GROHE SPA® F-digital Deluxe, the bathroom is no longer just a functional space. It is a life-enhancing experience that every day breathes new life into your tired body and soul.

PLANNING A GROHE F-DIGITAL DELUXE STEAM ROOM

IMPORTANT DETAILS!

Please read the following notes before planning and installing a GROHE F-digital Deluxe steamroom!

Coordination is the key. It is important to appoint an experienced supervisor before beginning construction to ensure each stage of the project is correctly carried out. Refer to the planning examples in this document for further details about the correct way to install the water supply, the drain pipes, the electrical cabling and the vapour barrier (if a steam generator is used).

Choosing materials. The materials used for the walls, the ceiling, the furniture and the electrical wiring and appliances must be carefully chosen to resist 100% humidity.

Understand the installation notes & local regulations. Before work commences, the project supervisor must be familiar with all the general installation notes for GROHE F-digital Deluxe as well as the country-specific regulations concerning construction work, plumbing, electric installation and the Technical Product Information (TPI).

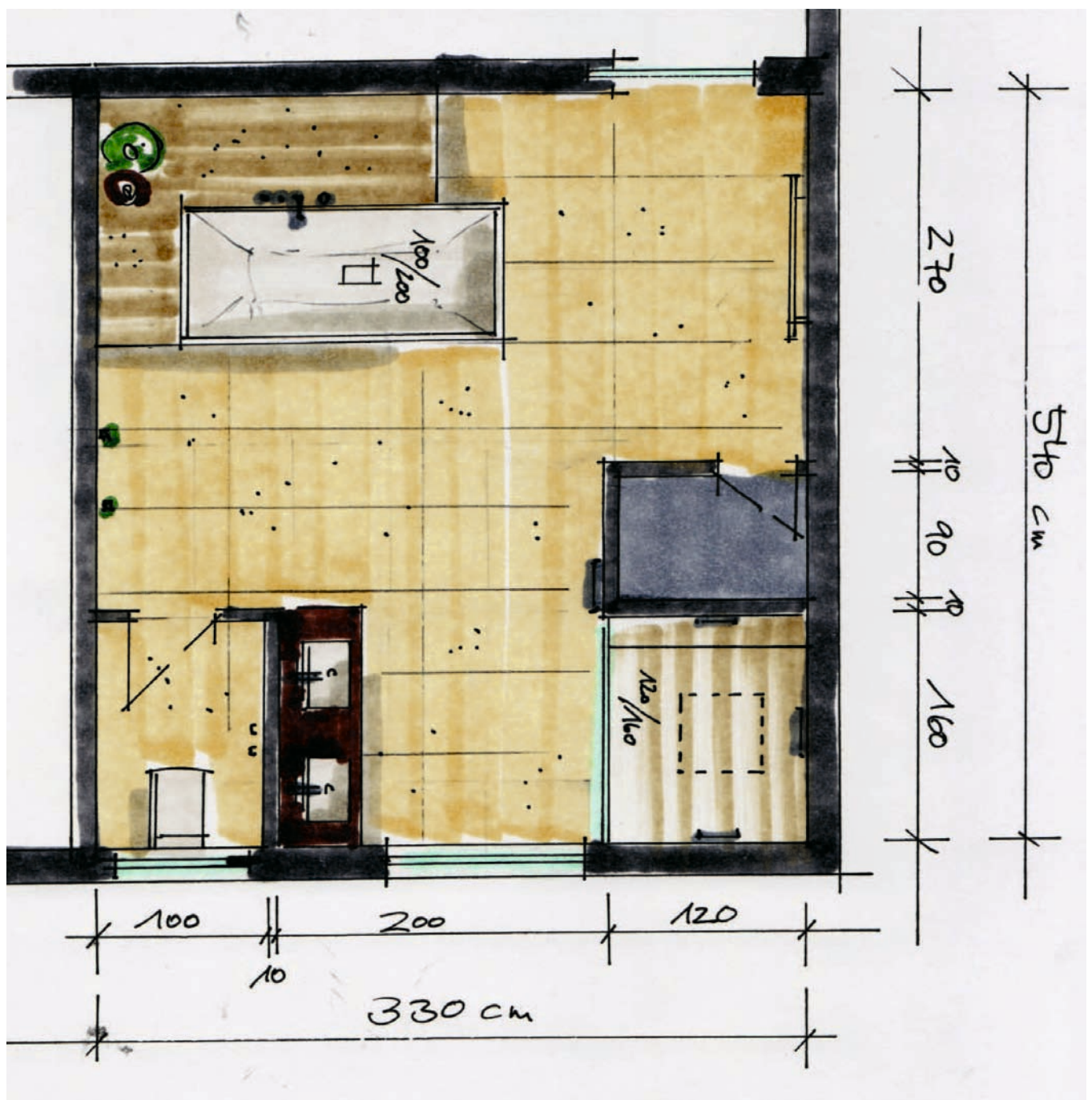
Plan the installation carefully. Check the best place for the base unit box and steam generator, especially in relation to the waste outlet, the maximum length (15m) of the steam pipe (copper pipe with a diameter of 15mm), and the need to completely isolate the steam pipe and pressure reducer. GROHE recommends the steam generator is located in a side room for easy maintenance. In addition, a pipe drain siphon is needed for boiling water after flushing. The drain has to be placed next to the steam generator, but not directly below to prevent upcoming steam.

! To avoid damages to the building please ensure adequate ventilation of the room above the ceiling shower and protect the surfaces with an appropriate moisture resistant paint.

Consult a qualified electricians. As installing steam generators, electronic products and/or electric cables in wet rooms can be hazardous it is important to use a qualified electrician. All products in the GROHE F-digital Deluxe range must be connected using a dedicated circuit that is secured by an appropriate ground fault circuit interrupter (FI)! Please ensure you use an uninterrupted power supply. If this is not possible, GROHE recommends the installation of an uninterruptible power supply (UPS) in accordance with local regulations.

Test and calibrate the system. After the system has been installed it is important to check if it is working properly. For the initial operation of the system an Apple or Android device with GROHE SPA® App installed is needed. Next, the pipes must be flushed, pressurized and checked for leaks. The initial operation steps are described in detail in the TPI (36 397 000 / 26 374 000).

Instruct the customer. When the completed steam room is presented, the customer should be instructed in its use and receive a copy of all TPIs.



INSTALLING A STEAM SHOWER

IMPORTANT DETAILS!

Attention: Please note the different installation depths of the products carefully! The wall and ceiling materials, the furniture and the components of the electrical supply must be carefully chosen to cope with 100% humidity. Please integrate a vapour barrier into the design of the steam shower cabin and a humidity resistant seal between the door and ceiling. Please do not use a mosaic that has been glued to a mesh. The roof should have a gradient of 2% running down to the back wall and the tiled stone seats should have a gradient of 1-2% running down from back to front.

To avoid the risk of scalding do not use any metal materials for the seats and storage spaces.

GROHE recommends the steam generator is installed in a separate room for ease of maintenance, maximum safety and to comply with legal and regulatory requirements. A free floor drain or pipe drain siphon for boiling water is also needed next to the steam generator for flushing and decalcification.

To install only light and sound no separate space is needed, but it is important to keep a minimal distance between the SPA Showers Base Unit Box (control unit) and the shower (see VDE 0100 part 701 or EEC Norm). A locker (36 367 000) can be used to coordinate all cables of the SPA Showers Base Unit Box.

The power supply should be installed higher than the steam generator and on the opposite of the flushing pipe to avoid contact with water.

Do not direct the steam outlet at a wall, seating or any other object. There should be a free space of at least 70 cm (28") in front of the steam outlet. Place the temperature sensor as far away from the steam outlet as possible. Diagonally opposite is best.

Ensure that steam rooms that are used continuously for more than two hours are ventilated by 10–20 cubic meters of air per person an hour. For detailed information see the 'Ventilation' section of the Steam Generator TPIs (36 362 000 or 27 934 000).

! To avoid damages to the building please ensure adequate ventilation of the room above the ceiling shower and protect the surfaces with an appropriate moisture resistant paint.

CAUTION!

Stay at least 12" (30 cm) away from hot steam escaping from steam outlet.

THE STEAM GENERATOR IMPORTANT DETAILS!

Do not make sharp bends or “elbows” along the steam pipe. A minimum radius of 50 mm is recommended. Do not allow sags or “water pockets” along the steam pipe and/or ventilation duct. All pipes must be completely isolated.

Caution! Prevent any type of obstruction along the steam line, such as a stop-off valve or tap. The internal diameter of the steam pipe must not be reduced. A connector for 15 mm copper pipe (soft steel pipe) is included. In countries that do not have this standard, the next higher diameter should be used.

The power supply to the steam generator via the feeder cable must not be broken. For that reason, avoid switches along the feeder cable.

Make sure the flushing pipe slopes all the way down to the waste outlet.

Caution! The steam generator’s flushing pipe must always discharge into a pipe drain siphon outside the steam room itself. The water is very hot (boiling water).

The ambient temperature outside the steam room and around the steam generator must not exceed 35°C.

De-scale the steam generator at regular intervals as instructed (please read the section on ‘De-scaling’ in the TPI of 27 934 000 or 36 362 000. In hard-water areas, where calcium levels exceed 5-dH, GROHE recommends the installation of a filter system to avoid scaling.

GROHE



GROHE F-DIGITAL DELUXE



GROHE F-DIGITAL DELUXE

SHOWER



27 865 000

Ceiling Shower F-Series 20"
with light, 508 x 508 mm, metal
1 spray pattern: Rain

29 069 000

Connection set for 27 865 000

LIGHT



36 359 000

Light Set

29 072 000

Rough-in set for Light Set

47 910 000

Cable extension Light 1.6m

47 867 000

Cable extension Light 5m

SOUND



36 360 000

Sound Set

29 073 000

Rough-in set for Sound Set

47 838 000

Cable extension Sound 5m



47 868 000

Cable extension Power Supply 5m



47 837 000

Cable extension Steam Generator 5m



47 877 000

Cable extension Temperature sensor 10m

STEAM



27 934 000

Steam Generator 6.6 kW

29 074 000

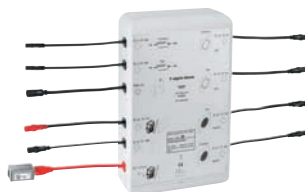
Rough-in set for Steam Generator

36 362 000 Steam Generator 2.2 kW

36 395 000 Steam Generator 240 V CN

36 396 000 Steam Generator 400 V CN

BASE UNIT BOX



36 397 000

Base Unit Box 2.0 Bluetooth

26 374 000

Base Unit Box 4.0 Bluetooth



36 371 000

Bluetooth unit

36 367 000

Rough-in set base unit box

42 429 000

Power Supply Unit base unit box

47 949 000

Power Supply Unit base unit box CN



GROHE
Digital®



GROHE
DreamSpray®



GROHE
StarLight®

GROHE RAINSHOWER® F-SERIES

HEAD SHOWERS / CEILING SHOWERS



27 286 000

Ceiling shower F-Series 20"
508 mm x 508 mm, metal
1 spray pattern: Rain

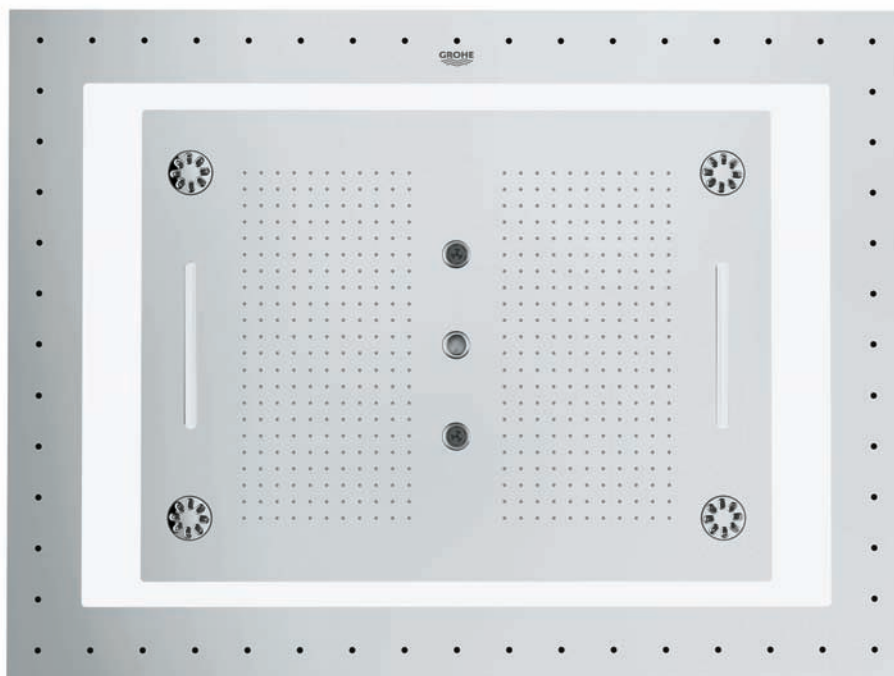


27 865 000

Ceiling Shower F-Series 20" with light
508 x 508 mm, metal
1 spray pattern: Rain

29 069 000

Connection set for 27 865 000



NEW

26 373 000

Ceiling shower with light F-Series 40" AquaSymphony
1016 mm (width) x 762 mm (height) x 155 mm (depth), metal
6+ sprays: 1 x AquaCurtain, 1 x Pure XL spray, 1 x 2 Drizzle sprays (cold mist spray), 2 x GROHE PureRain spray 400 x 190 mm (separately controlled), 1 x 2 XL Waterfall, 1 x 4 Bokoma Spray® with adjustment angle 20° and combinations

26 376 000

Rainshower® F-Series 40" Rough-in set



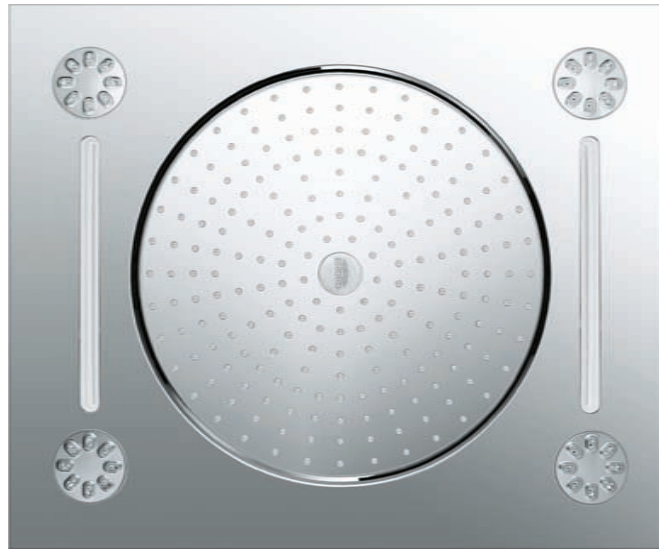
GROHE
DreamSpray®



GROHE
StarLight®

GROHE RAINSHOWER® F-SERIES

HEAD SHOWERS CEILING SHOWERS



27 939 001

Ceiling shower F-Series 15" Multispray

381 mm (width) x 17 mm (height) x 456 mm (depth)

metal

4+ spray patterns: Rain, 2x XL Waterfall, 4x Bokoma Spray and combinations



27 938 001 + 26 042 000

Head shower F-Series 15" Multispray

381 mm (width) x 60 mm (height) x 677 mm (depth)

metal

4+ spray patterns: Rain, 2x XL Waterfall, 4x Bokoma Spray and combinations

+ separate concealed body



27 467 000

Ceiling shower F-Series 10"
254 mm x 254 mm, metal
1 spray pattern: Rain

27 271 000

Head shower F-Series 10"
254 mm x 254 mm, metal
1 spray pattern: Rain

27 285 000

with 9.5 l/min. GROHE EcoJoy

27 815 000

with 7.5 l/min. GROHE EcoJoy

27 253 000

Head shower F-Series 5"
127 mm x 127 mm, metal
1 spray pattern: Rain

SIDE SHOWER



26 061 000

Head shower set F-Series 10"
length 142 mm, metal
1 spray pattern: Rain

26 071 000

with 9.5 l/min. GROHE EcoJoy

26 259 000

Head shower set F-Series 10"
projection 422 mm
1 spray pattern: Rain

26 060 000

projection 286 mm

26 070 000

with 9.5 l/min. GROHE EcoJoy

27 251 000

Side shower F-Series 5"
127 mm x 127 mm, metal
1 spray pattern: Rain

GROHE TRIMSETS – GROHTHERM F



NEW

34 634 000

Grotherm F

THM Complete Kit for F40" preconfigured
consisting of:

- 2 x THM with 2-way diverter (27 618 000) + 35 500 000
- 1 x Triple volume control trim (27 625 000) + 35 031 000
- 1 x Volume Control (27 623 000) + 35 028 000
- 1 x Wall shower union with holder (27 621 000) + 35 034 000
- 1 x Sena Stick Hand Shower (28 034 000)
- 1 x Relaxaflex Metal 1500mm (28 143 000)

28 034 000

Hand shower Sena Stick

1 spray pattern: Rain

28 341 000

with 9.5 l/min. GROHE EcoJoy



27 618 000 + 35 500 000

Thermostatic Module
with 2-way AquaDimmer
+ separate concealed body



27 619 000 + 35 500 000

Thermostatic Module
+ separate concealed body



GROHE
EcoJoy



GROHE
StarLight®



GROHE
TurboStat®



27 621 000 + 35 034 000

Wall union
with shower holder
+ separate concealed body



27 623 000 + 35 028 000

Single volume control
+ separate concealed body



27 625 000 + 35 031 000

Triple volume control
+ separate concealed body

PURE FLEXIBILITY
SHOWER SOLUTIONS





MEDIUM SHOWER
CONFIGURATION



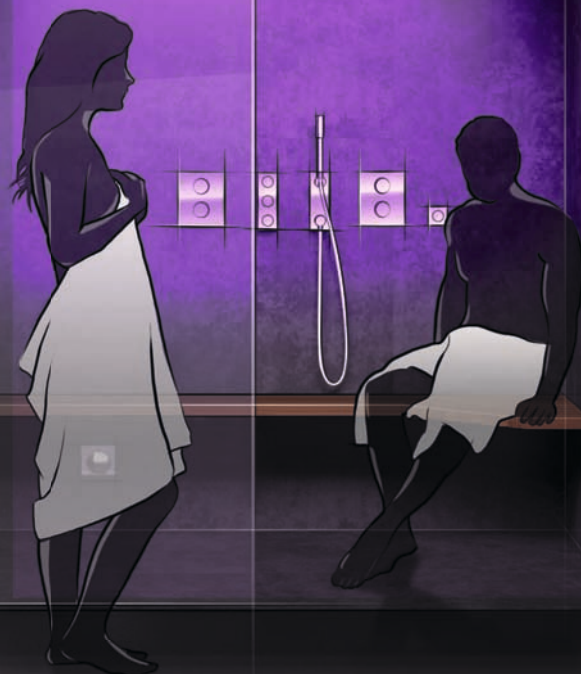
LARGE SHOWER
CONFIGURATION



GROHE F-DIGITAL DELUXE

With GROHE's broad range of Tailor-Made showers, you have endless possibilities to create the shower you want to own, the way it should look and the way you want to shower, whatever your mood. Based on the space you have available, GROHE created inspirational luxury showers with Rainshower® F-Series and F-digital Deluxe. Choose between bespoke solutions for a small individual shower cabin, up to a XL wellness zone for you and your partner.

XL SHOWER CONFIGURATION



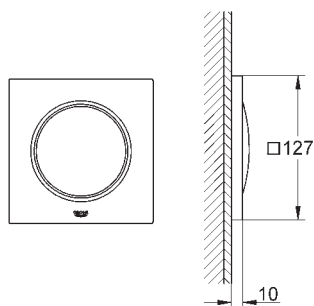
GROHE F-DIGITAL DELUXE CONFIGURATION M

If you have enough room to install a small bench you also have the chance to enjoy luxurious steam therapy with the GROHE F-digital Deluxe steam generator. The three Rainshower® F5" side showers on the right side are complemented by the F5" sound and light modules for a real stereo aqua visual and sound effect. Combine the showers with the powerful and flexible Grohtherm F mechanical water controls – always the right temperature – and a Sena hand shower.



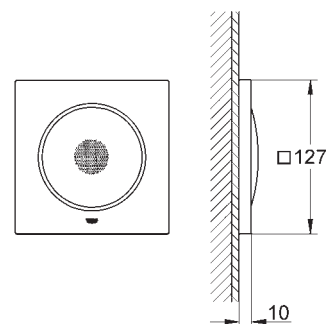


GROHE F-DIGITAL DELUXE CONFIGURATION M



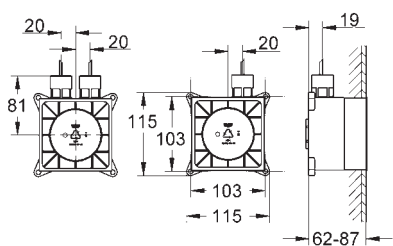
36 359 000

Light set



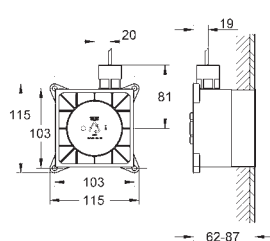
36 360 000

Sound set



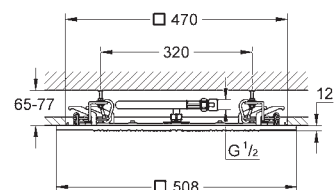
29 072 000

Rough-in Light set



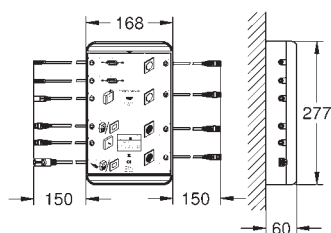
29 073 000

Rough-in Sound set



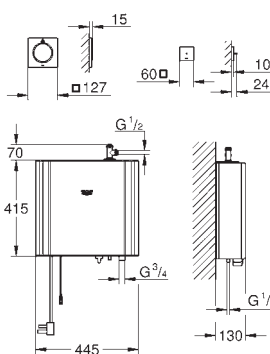
27 286 000

Ceiling shower 20"



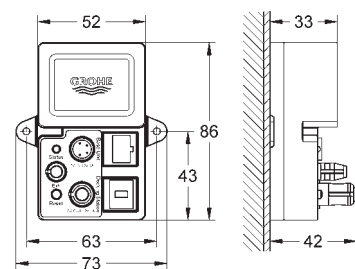
36 397 000

Base unit box Bluetooth 2.0



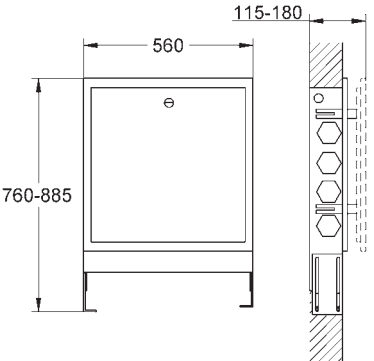
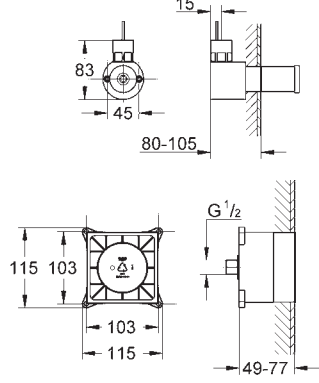
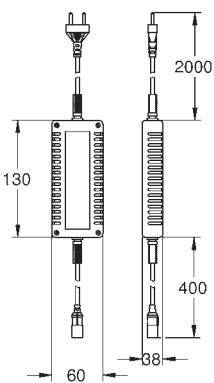
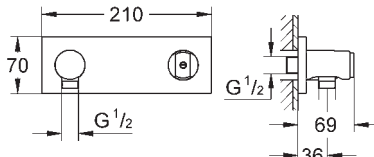
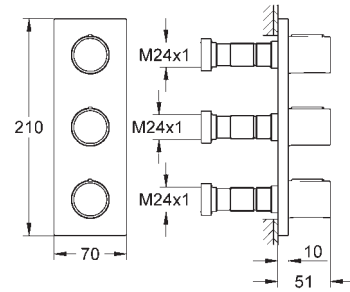
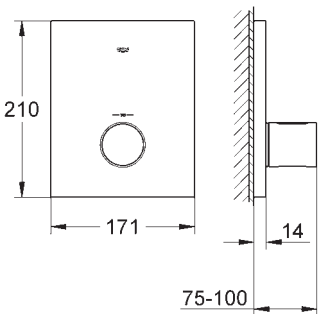
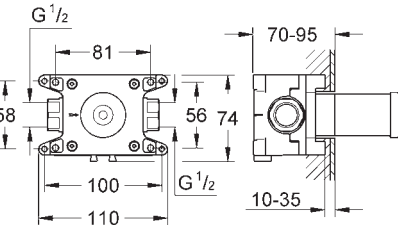
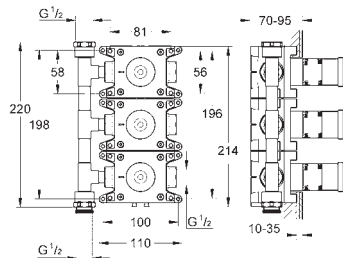
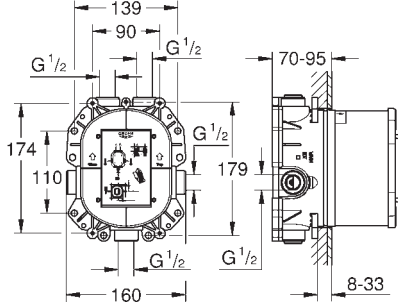
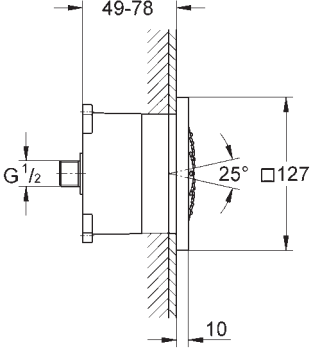
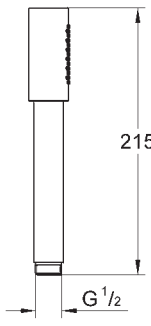
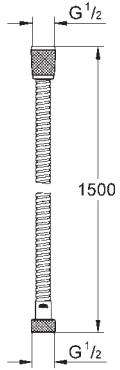
36 362 000

Steam generator 2.2 kW with steam outlet and temperature sensor



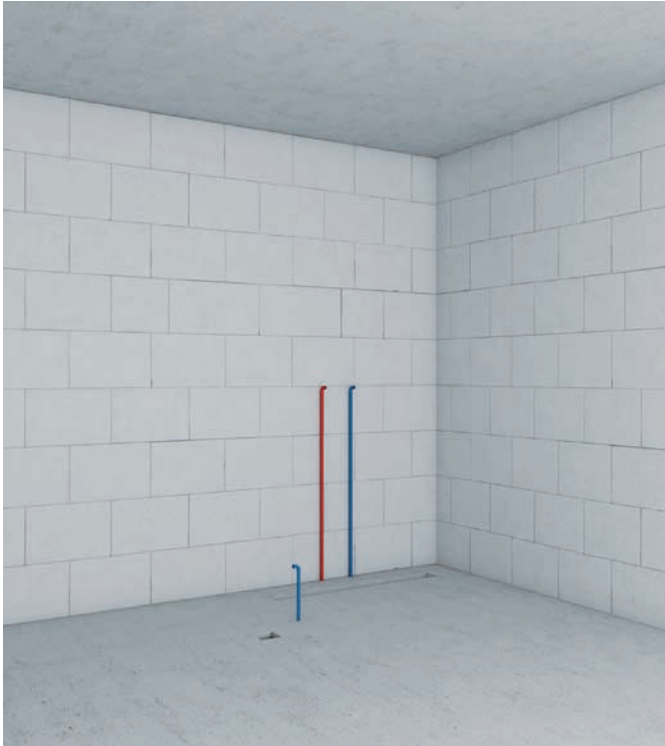
36 371 000

Bluetooth unit

 <p>36 367 000 Rough-in set base unit box</p>	 <p>29 074 000 Rough-in set steam generator</p>	 <p>42 429 000 Power supply base unit box</p>
 <p>27 621 000 Wall shower union with integrated shower holder</p>	 <p>27 625 000 Triple volume control trim</p>	 <p>27 619 000 Thermostatic trim</p>
 <p>35 034 000 Rough-in for wall shower union 27 621 000</p>	 <p>35 031 000 Rough-in for triple volume control 27 625 000</p>	 <p>35 500 000 Rapido T Universal thermostatic mixer for concealed installation</p>
 <p>27 251 000 Side shower 5"</p>	 <p>28 034 000 Sena Hand shower</p>	 <p>28 143 000 Relaxa Metal shower hose</p>

GROHE F-DIGITAL DELUXE CONFIGURATION M

BRICKWORK

**Size of the shower cabin:**

1.10 x 0.90 m

room height:

2.50 m

To comply with local legal regulations GROHE recommends a side room for the steam generator and the base unit box; it should have a free floor drain/siphon.

LIGHTWEIGHT WALL CONSTRUCTION



Overview of the lightweight wall construction for the shower and the side room:

Fixing plates for steam outlet, temperature sensor, water controls & side showers.

Place the locker for the Base unit box in the side room and fix it to the floor.

Installation heights:

- water controls: 1.15 m.
- side showers from ground: 0.85 m, 1.15 m and 1.45 m.
- steam outlet: 0.2 m and 0.15 m from side wall.
- temperature sensor: 1.75 m
(with maximum distance to steam outlet).

The maximum distance from Steam generator to Base unit box should not exceed 4.5 m.

Attention:

Please note the different installation depths of the products carefully!

DUCTWORK FOR CABLES



Install all concealed boxes; see installation heights on page 50.

Ductwork for cables has to be used for all electrical connections from the concealed boxes to the base unit box (ductwork diameter 21 mm).

Attention:

At each side of the cable an excess length of 20 cm is needed. Additionally corners and curves have to be added to total length!

Attention:

Avoid bends in cables and too close-rounded edges.

DUCTWORK WITH CABLES



For an easy connection of the modules ensure the cables have at least an excess length of 20cm for the concealed boxes.

Maximum cable length Light & Sound modules:

9.5 m (5 m included in delivery).

Light modules:

Connection from Base unit box to lamp 1.
Loop through from lamp 1 (two ductwork connectors)
to lamp 2 (one ductwork connector).

Sound modules:

Connect Y connector to the Base unit box, split each pair of sound modules and place them opposite to each other in the SPA cabin.

GROHE F-DIGITAL DELUXE CONFIGURATION M

PIPE INSTALLATION



Install concealed boxes for water controls and side showers. Connect the warm and cold water and install pipes for water supply.

For installation heights please see table on page 50.

Attention:

Please do not forget to integrate a vapour barrier!



View from the right side

UTILITY ROOM



Overview of the utility room, including steam generator and base unit box.

The steam generator has to be placed where it is accessible for maintenance.

In addition, a free floor drain/siphon is needed for boiling water after flushing. The drain must be placed next to the steam generator but not directly below it to prevent upcoming steam.

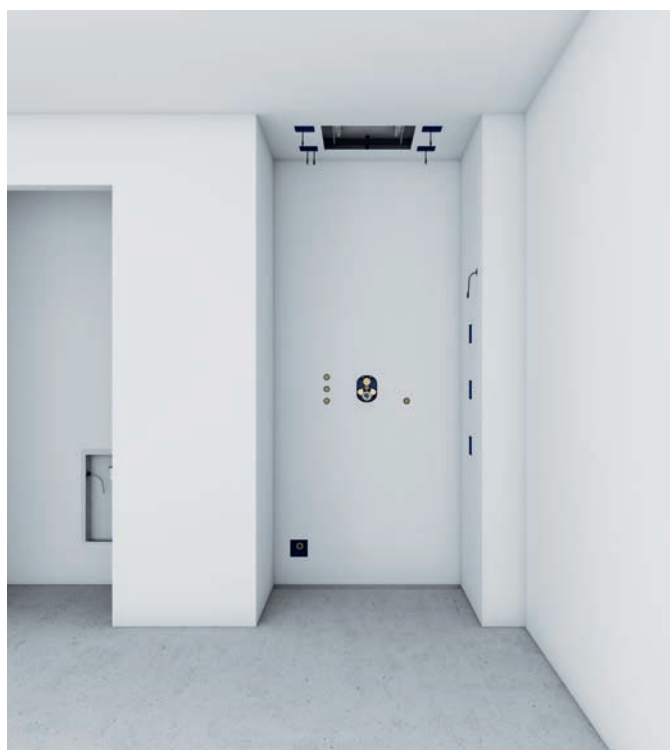
All pipes must be completely isolated.

FRONTAL VIEW BASE UNIT BOX



Connections of all single modules with the base unit box of configuration M, including power supply (1 power supply with 2 x 1 single light module and 2 x 1 single sound module).

WALL COVERING



While wall covering is carried out, please ensure the overhanging cable ends remain in position; otherwise connection of the modules is not possible.

Please install each module in the concealed boxes and connect them according to the relevant TPis.

For the initial operation of the SPA shower cabin an apple or android device with GROHE SPA® app installed is needed.

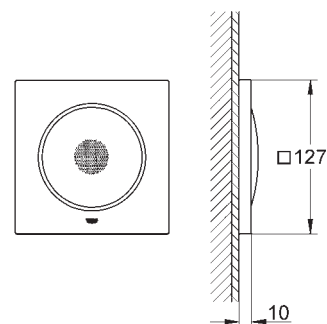
GROHE F-DIGITAL DELUXE CONFIGURATION L

If you have the space, why not build a 160 cm-wide large shower? Use the extra space for a full-width bench on which to enjoy the water, light, sound and steam from F-digital Deluxe together. With two speakers in the shower room and two outside, you can also listen to your music outside the shower. Experience true 3D showering with the luxurious Rainshower® ceiling shower 20" with light and six side showers. The reliable and accurate Grohtherm F thermostatic controls steer all the different sprays as well as the Sena hand shower.



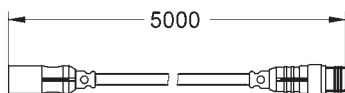


GROHE F-DIGITAL DELUXE CONFIGURATION L



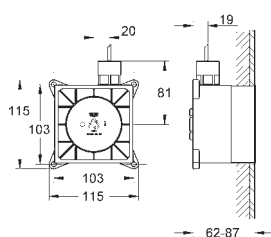
36 360 000

Sound set



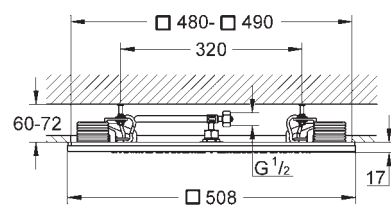
29 069 000

Connection set for Ceiling shower
with light



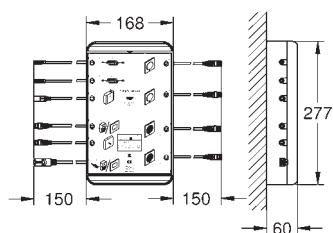
29 073 000

Rough-in Sound set



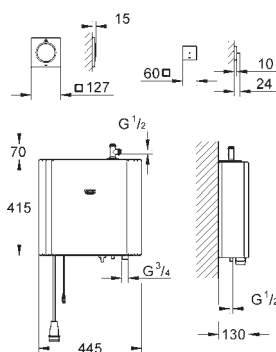
27 865 000

Ceiling shower with light



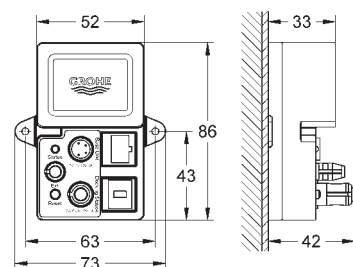
36 397 000

Base unit box Bluetooth 2.0



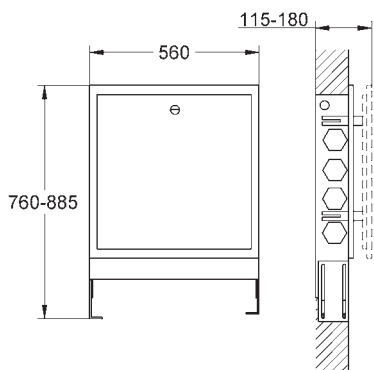
27 934 000

Steam generator 6.6 kW with steam
outlet and temperature sensor



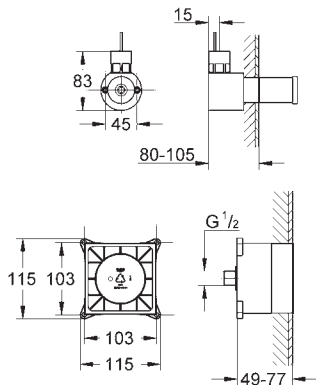
36 371 000

Bluetooth unit



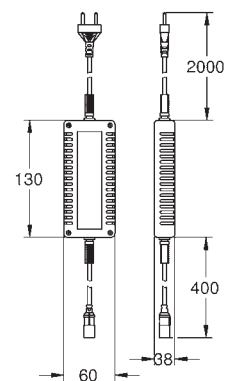
36 367 000

Rough-in set base unit box



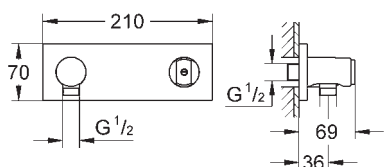
29 074 000

Rough-in set steam generator



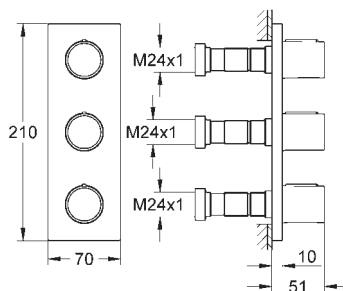
42 429 000

Power supply base unit box



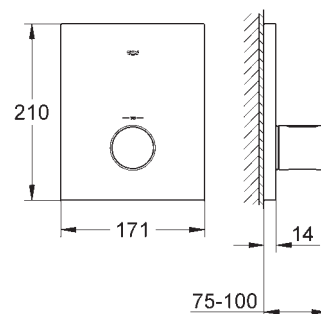
27 621 000

Wall shower union
with integrated shower holder



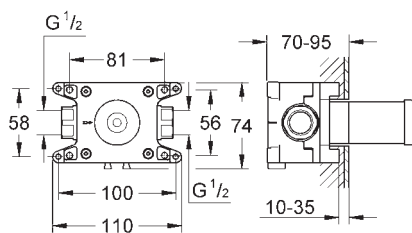
27 625 000

Triple volume control trim



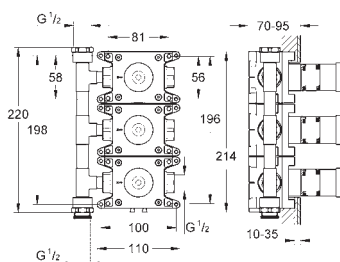
27 619 000

Thermostatic trim



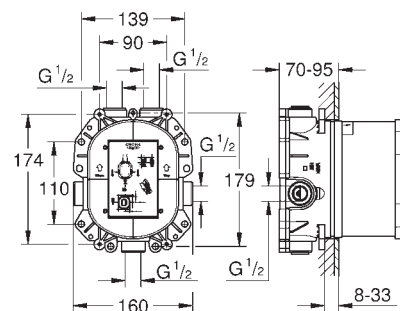
35 034 000

Rough-in for wall shower union
27 621 000



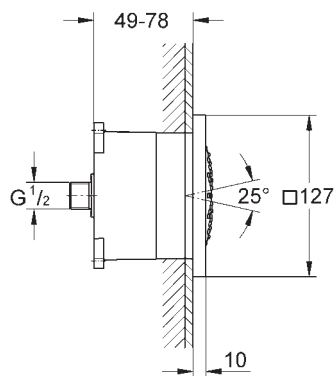
35 031 000

Rough-in for triple volume control
27 625 000



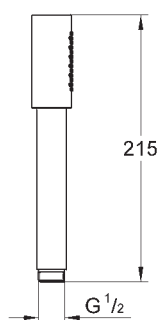
35 500 000

Rapido T
Universal thermostatic mixer
for concealed installation



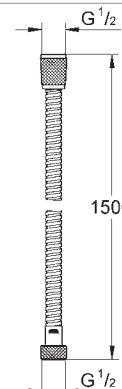
27 251 000

Side shower 5"



28 034 000

Sena Hand shower

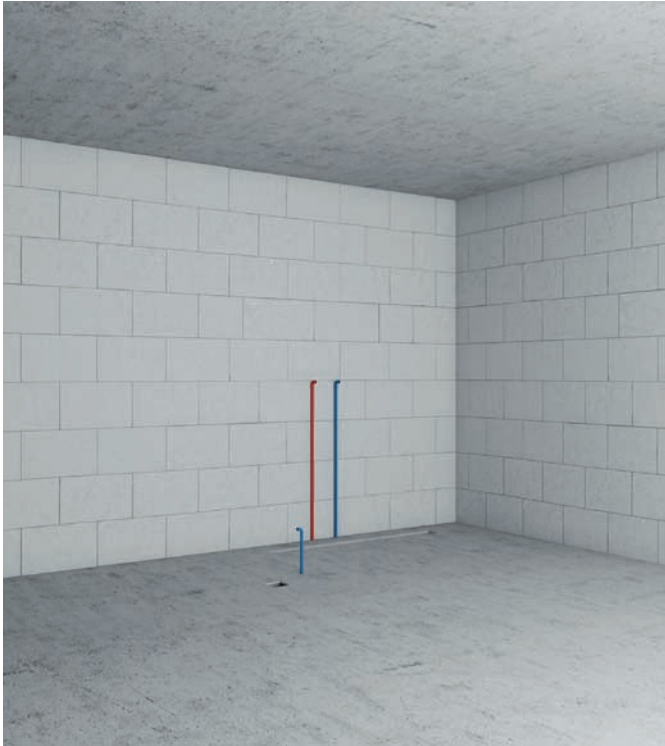


28 143 000

Relaxaflex Metal shower hose

GROHE F-DIGITAL DELUXE CONFIGURATION L

BARE BRICKWORK

**Size of the shower cabin:**

1.60 x 1.20 m

room height:

2.50 m

To comply with local legal regulations GROHE recommends a side room is used for the Steam generator and the base unit box; it should have a free floor drain/siphon.

LIGHTWEIGHT WALL CONSTRUCTION



Overview of the lightweight wall construction for the shower and the side room:

Wooden base for the side showers, sound modules above, water controls as well as the steam outlet and temperature sensor above the side showers on the right side.

Place the locker for the Base unit box in the side room and fix it to the floor.

Installation heights:

- water controls: 1.15 m.
- side showers from ground: 0.85 m, 1.15 m and 1.45 m.
- sound modules: 1.75 m.
- steam outlet: 0.2 m and 0.2 m from side wall.
- Temperature sensor: 1.75 m
(with maximum distance to steam outlet).

The maximum distance from Steam generator to Base unit box should not exceed 4.5 m.

Attention:

Please note the different installation depths of the products carefully!

DUCTWORK FOR CABLES



Install all concealed boxes; please see installation heights on page 50.

Ductwork for cables has to be used for all electrical connections from the concealed boxes to the base unit box (ductwork diameter 21 mm).

Attention:

At each side of the cable an excess length of 20 cm is needed. Additionally corners and curves have to be added to total length!

Attention:

Avoid bends in cables and too close-rounded edges.

DUCTWORK WITH CABLES



For an easy connection of the modules ensure cables have an extra 20 cm for the concealed boxes.

Maximum cable length Light & Sound modules:
9.5 m (5 m included in delivery).

Light modules:

Connection from Base unit box to lamp 1.
Loop through from lamp 1 (two ductwork connectors) to lamp 2 (one ductwork connector).

Sound modules:

Connect Y connector to the Base unit box, split each pair of sound modules and place them opposite to each other in the SPA cabin.

GROHE F-DIGITAL DELUXE CONFIGURATION L

BARE BRICKWORK



Install all other concealed boxes for water controls and side showers.

Connect the warm and cold water and install pipes for water supply.

For installation heights please see table on page 50.

ATTENTION:

Please do not forget to integrate a vapour barrier!



View from the right side

UTILITY ROOM



Overview of the utility room, including steam generator and base unit box.

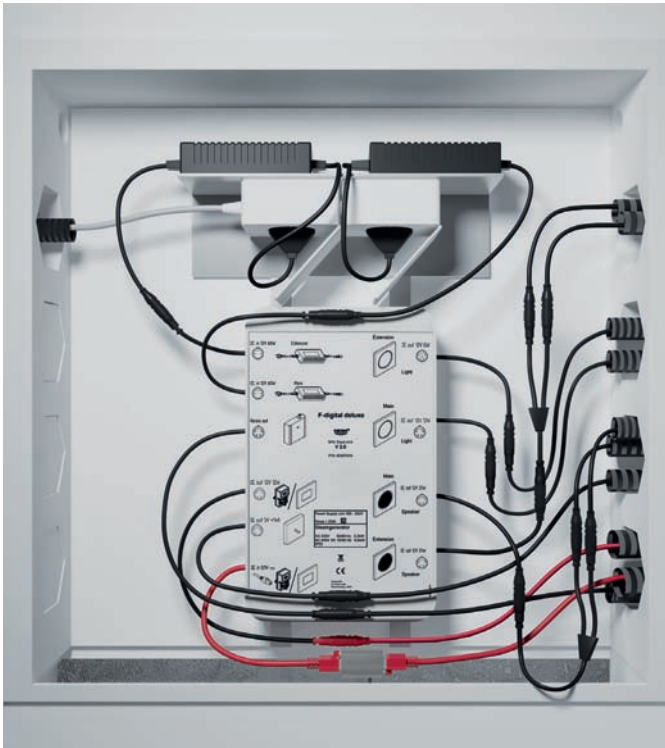
The steam generator has to be placed where it is accessible for maintenance.

In addition, a free floor drain/siphon is needed for boiling water after flushing.

The drain must be placed next to the steam generator but not directly below it to prevent upcoming steam.

All pipes must be 100% isolated.

FRONTAL VIEW



Connection of all single modules with the base unit box of configuration L, including power supply (2 power supplies with 4 x 1 single light modules and 2 x 1 single sound modules).

WALL COVERING



While covering the wall take care to leave the overhanging cable ends in position; otherwise connection of the modules is not possible.

Please install each module in the concealed boxes and connect them according to the relevant TPI.

For the initial operation of the SPA shower cabin an apple or android device with GROHE SPA® app installed is needed.

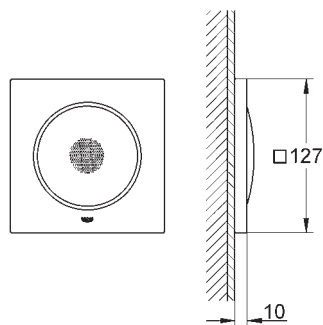
GROHE F-DIGITAL DELUXE CONFIGURATION XL

For the ultimate in luxurious showering why not super-size your space with the new AquaSymphony Rainshower® shower head. At over a metre wide it offers six spray options to suit your mood, including the astonishing AquaCurtain which embraces you in an overwhelming curtain of water. Enjoy music inside the shower and outside thanks to four speakers, and feel the soothing benefits of coloured light flooding the whole space. All this is effortlessly orchestrated by you via the supremely accurate Grohtherm F thermostatic controls for an unforgettable home spa experience.

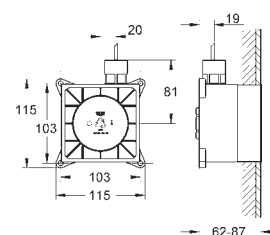




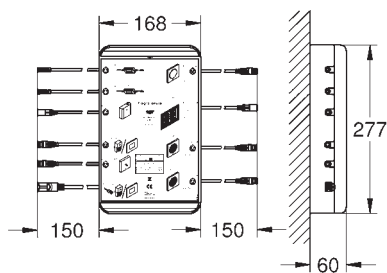
GROHE F-DIGITAL DELUXE CONFIGURATION XL



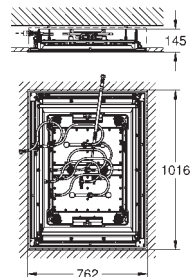
36 360 000
Sound set



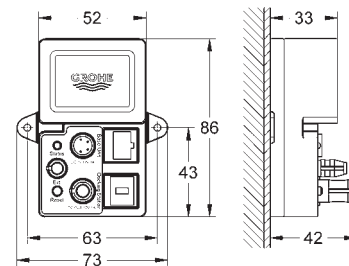
29 073 000
Rough-in Sound set



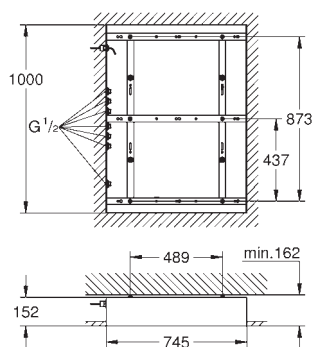
26 374 000
Base unit box 4.0 Bluetooth®
F-Series 40"



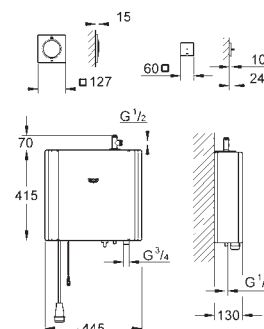
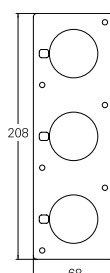
26 373 000
Rainshower® F-Series 40"



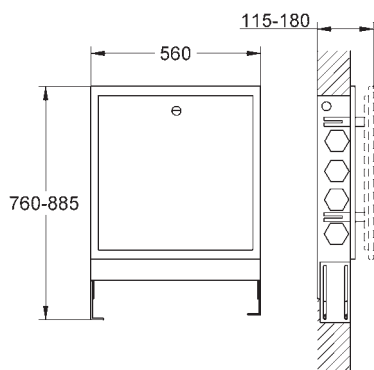
36 371 000
Bluetooth unit



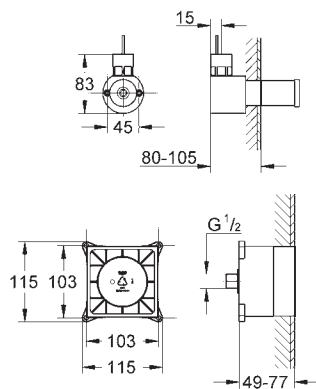
26 376 000
Rainshower® F-Series 40" Roughing-in set



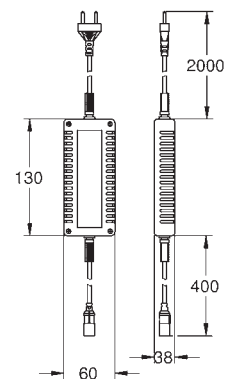
27 934 000
Steam generator 6.6 kW
with steam outlet and
temperature sensor



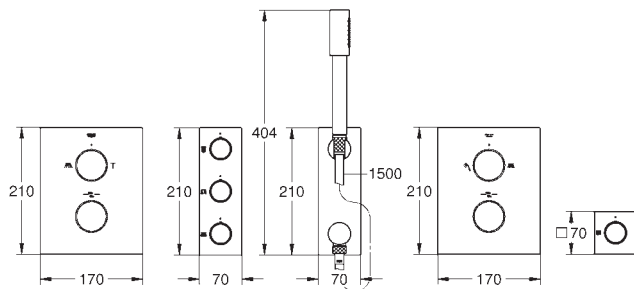
36 367 000
Rough-in set base unit box



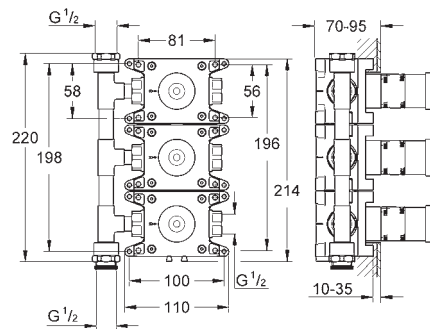
29 074 000
Rough-in set steam generator



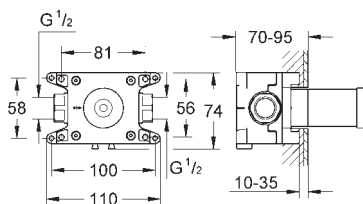
2 x 42 429 000
Power supply base unit box



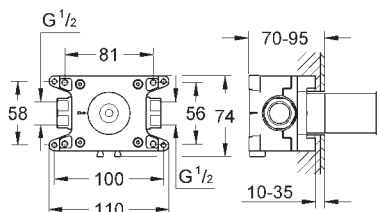
34 634 000
Grohtherm F
THM Complete Kit for F40" preconfigured



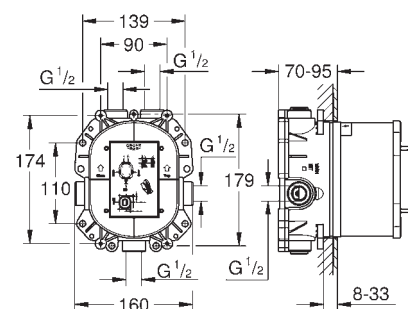
35 031 000
Rapido C
Rough-in box for triple volume control 27 625 000



1 x 35 028 000
Rapido C
Rough-in for single volume control

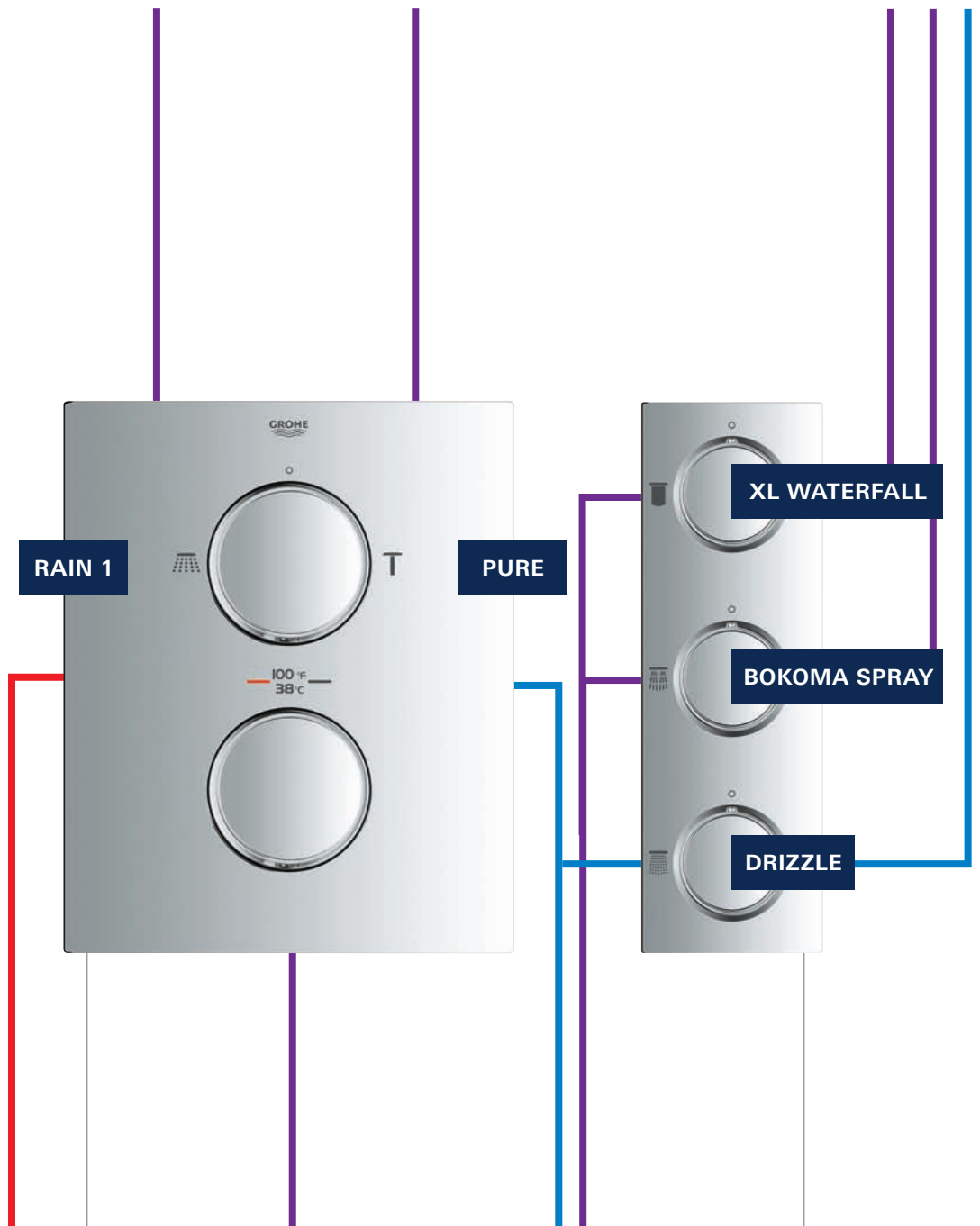


35 034 000
Rough-in for wall shower union
27 621 000



2 x 35 500 000
Rapido T
Universal thermostatic mixer
for concealed installation

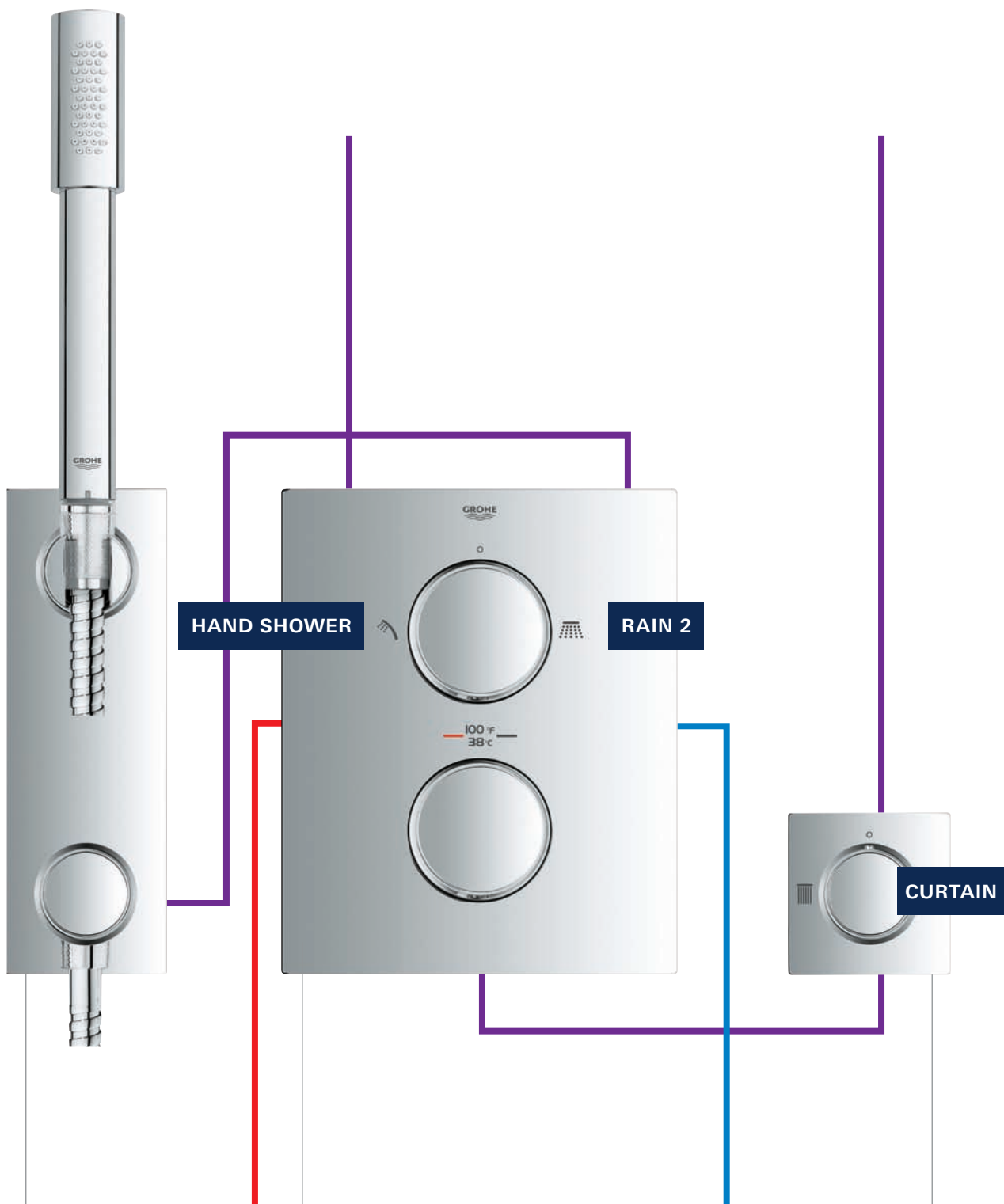
GROHTherm F
Water Control Trims
34 634 000



ADDITIONAL CONCEALED BODIES NEEDED:

1 x 35 500 000
Rapido T
Universal thermostatic mixer

35 031 000
Rapido C
Rough-in for triple volume control



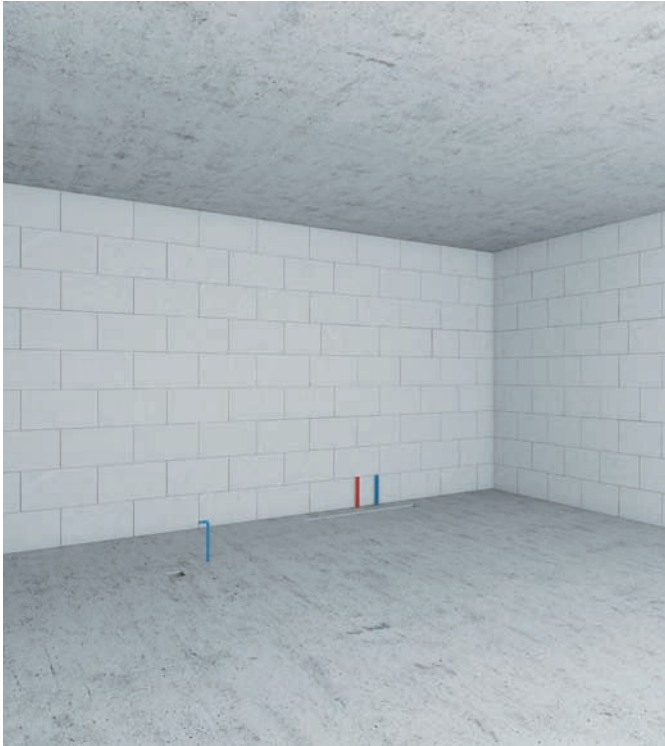
1 x 35 034 000
Rough-in for wall shower
union 27 621 000

1 x 35 500 000
Rapido T
Universal thermostatic mixer

1 x 35 028 000
Rapido C
Rough-in for single volume control

GROHE F-DIGITAL DELUXE CONFIGURATION XL

BARE BRICKWORK

**Size of the shower cabin:**

2 x 2.40 m

room height:

>2.50 m

To comply with local legal regulations GROHE recommends a side room is used for the Steam generator and the base unit box; it should have a free floor drain/siphon.

Performance of the waste: > 100 l/min

Attention:

The ceiling construction must be appropriate for the static requirement of the product (total product weight > 70 kg).

LIGHTWEIGHT WALL CONSTRUCTION



Overview of the lightweight wall construction for the shower and the side room:

Wooden base for the sound modules, water controls as well as the steam outlet and temperature sensor.

Place the locker for the Base unit box in the side room and fix it to the floor.

Installation heights:

- water controls: 1.15 m.
- sound modules: 1.75 m.
- steam outlet: 0.2 m and 0.2 m from side wall.
- Temperature sensor: 1.75 m
(with maximum distance to steam outlet).

The maximum distance from Steam generator to Base unit box should not exceed 4.5 m.

Attention:

Please note the different installation depths of the products carefully!

DUCTWORK WITH CABLES



For an easy connection of the modules ensure cables have an extra 20 cm for the concealed boxes.

Maximum cable length Light & Sound modules:

9.5 m (5 m included in delivery).

Light modules:

Connection from Base unit to light curtain.

Sound modules:

Connect Y connector to the Base unit box, split each pair of sound modules and place them opposite to each other in the SPA cabin.

Rear ventilation is required.

BARE BRICKWORK



Install all other concealed boxes for water controls.

Connect the warm and cold water and install pipes for water supply.

For installation heights please see table on page 50.

ATTENTION:

Please do not forget to integrate a vapour barrier!



View from the right side

GROHE F-DIGITAL DELUXE CONFIGURATION XL

UTILITY ROOM



Overview of the utility room, including steam generator and base unit box.

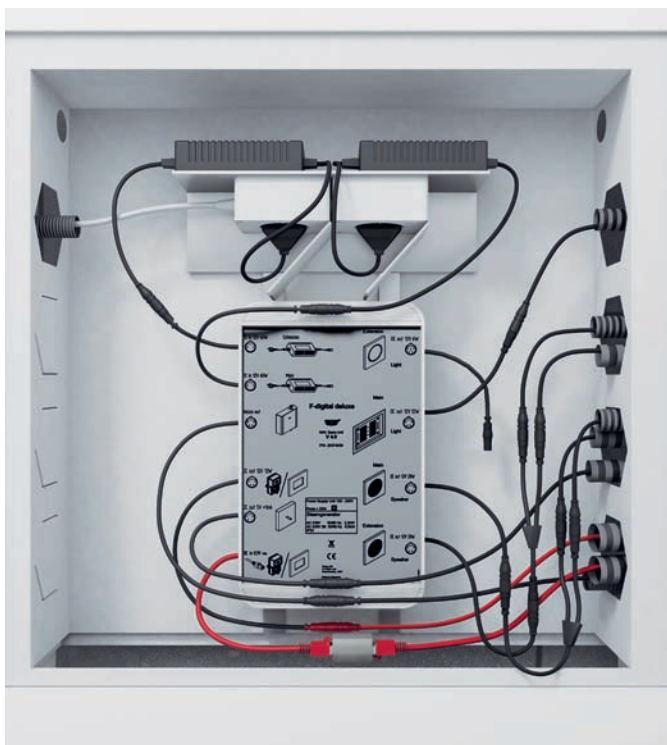
The steam generator has to be placed where it is accessible for maintenance.

In addition, a free floor drain/siphon is needed for boiling water after flushing.

The drain must be placed next to the steam generator but not directly below it to prevent upcoming steam.

All pipes must be 100% isolated.

FRONTAL VIEW



Connection of all single modules with the base unit box of configuration XL, including power supply (2 power supplies with 2x sound modules, 1 light curtain, 1 steam module, 1 Bluetooth, 1 temperature sensor, 2x single light modules)

WALL COVERING



While covering the wall take care to leave the overhanging cable ends in position; otherwise connection of the modules is not possible.

Please install each module in the concealed boxes and connect them according to the relevant TPIs.

For initial operation of the SPA shower cabin a mobile device with GROHE SPA® app installed is required; it is not included with any GROHE F-digital Deluxe product.



INSTALLATION INSTRUCTIONS FOR ACCESSORIES

Basin set

Mirror	1100 - 1250 mm
Shelf	1150 - 1250 mm
Glass holder	1150 - 1250 mm
Soap dish	950 - 1050 mm
Soap dispenser	950 - 1050 mm
Towel ring	900 - 1000 mm
Towel rail	850 - 950 mm
Basin leading edge	850 mm

Recommended height*

WC set

Toilet roll holder	700 - 800 mm
Spare toilet roll holder	200 - 250 mm
Toilet brush set	200 - 250 mm
from the floor mounting hight of WC without lid	400 mm

Recommended height*

Bath set

Towel rail 600/800 mm	1550 - 1750 mm
Robe hook	1550 - 1750 mm
Soap dish	100 - 350 mm **
Soap dispenser	100 - 350 mm **
Grip 300 mm	70 - 150 mm **

Recommended height*

Bidet set

Towel ring	900 - 950 mm
Soap dish	650 - 750 mm

Recommended height*

Shower set

Towel rail 600/800 mm	1550 - 1750 mm
Robe hook	1550 - 1750 mm
Soap dish	1200 - 1500 mm
Soap dispenser	1200 - 1500 mm
Grip 300 mm	1200 - 1500 mm

Recommended height*



* Measured from the flooring

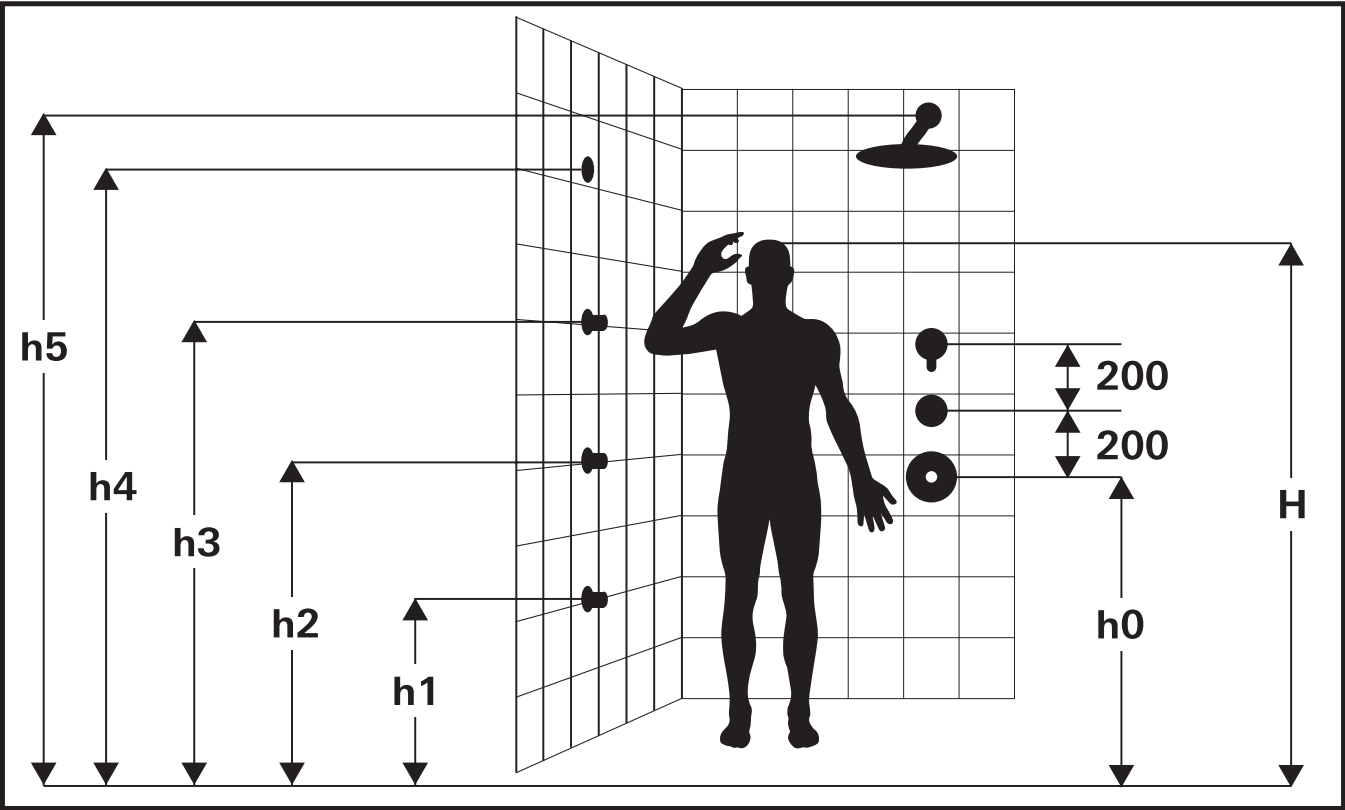
** Measured from the bath rim

RECOMMENDED INSTALLATION HEIGHT FOR SHOWERS

DESCRIPTION		SHOWER INSTALLATION HEIGHT (CM)				
Body height	H	150	160	170	180	190
Water controls	h0	105	115	120	125	130
Side shower	h1	60	70	70	75	80
Side shower	h2	95	105	110	115	120
Side shower	h3	130	140	150	155	160
Temperature sensor	h4	150	160	170	180	190
Head shower	h5	200	210	225	235	250

H = body height
h0 = height of the Water controls
h1 = height of the knee shower
h2 = height of the hip shower
h3 = height of the shoulder shower
h4 = height of the temperature sensor
h5 = height of the head shower

barrier free installation height of controller / diverter: 115 cm



Grohe AG
Feldmühleplatz 15
D - 40545 Düsseldorf
Germany

Asia Pacific
Regional Headquarters
Grohe Pacific Pte Ltd
180 Clemenceau Ave
#06-02 Haw Par Centre
Singapore 239922
Tel: (65) 6311 3611
Fax: (65) 6738 0855
www.grohe.com/sg



© 08/2016 – Copyright by GROHE

Please contact our Asia Pacific offices below:

GROHE China:
tel (8621) 6375 8878
www.grohe.com/cn

GROHE Japan:
tel (81) 3 5775 7500
www.grohe.com/jp

New Zealand:
tel (64) 9573 0490
www.robertson.co.nz

GROHE Taiwan:
tel (886) 2 2545 9899
www.grohe.com/tw

GROHE Hong Kong:
tel (852) 28 06 06 11
www.grohe.com/hk

GROHE Korea:
tel (82) 2 3485 0679
www.grohe.com/kr

GROHE Philippines:
tel (632) 893 3113 or 1620
www.grohe.com/ph

GROHE Thailand:
tel (66) 2102 2222
www.grohe.com/th

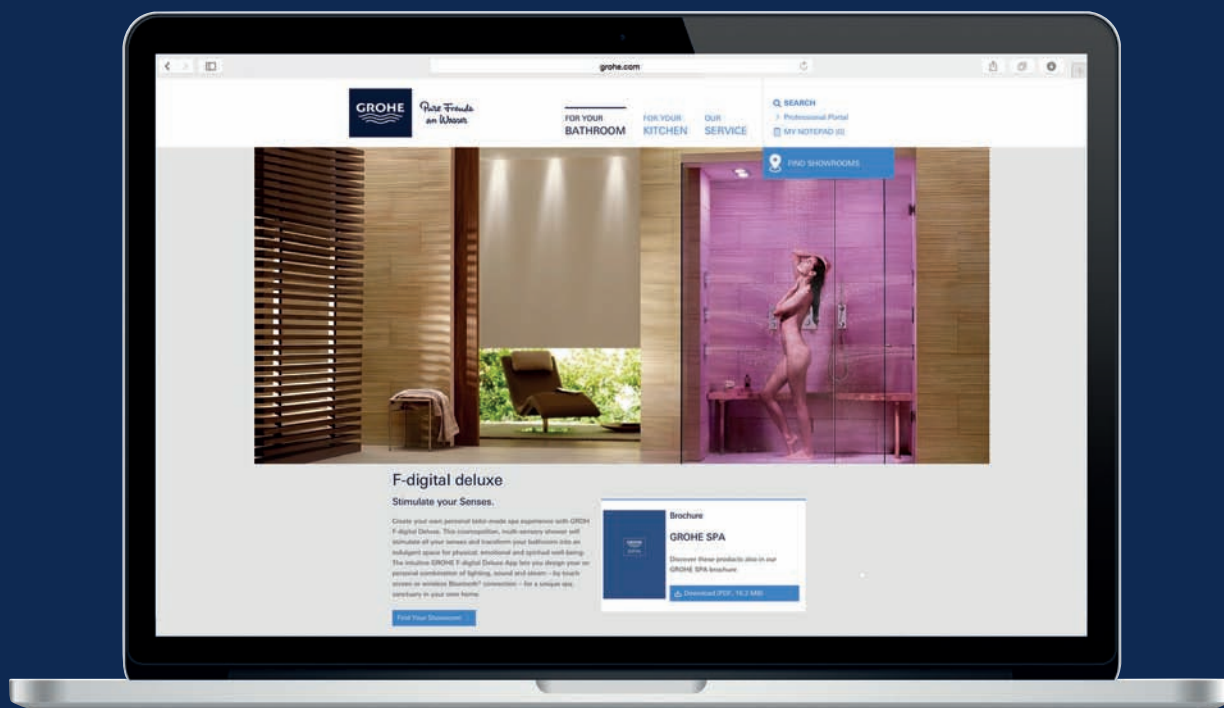
GROHE India:
tel (91) 124 493 3000
www.grohe.com/in

GROHE Malaysia:
tel (603) 2028 4600
www.grohe.com/my

GROHE Singapore:
tel (65) 6311 3611
www.grohe.com/sg

GROHE Vietnam:
tel (84) 4 3556 6639
or (84) 8 3997 2013
www.grohe.com/vn

GROHE Indonesia:
tel 62 21 2966 0296
www.grohe.com/id



FOR FURTHER INFORMATION PLEASE VISIT OUR WEBSITE WWW.GROHE.COM.

GROHE.COM

Follow us



PART OF LIXIL