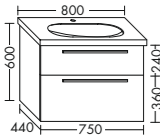
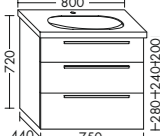
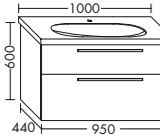
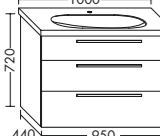


Pure Freude
an Wasser

GROHE
WAVE

GROHE
BEST MATCH
WITH BURGBAD FURNITURE

Description	Ref. No.	Size
VANITY UNIT FOR EURO CERAMIC VANITY BASINS 80 AND 100 CM		
 <p>– 1 drawer top with bottle-trap cut-out and divide – 1 pull out drawer bottom</p>	REF. NO.	FOR:
	Vanity basin	39 584 00H
 <p>– 1 drawer top with bottle-trap cut-out and divide – 2 pull out drawers bottom</p>	REF. NO.	FOR:
	Vanity basin	39 584 00H
 <p>– 1 drawer top with bottle-trap cut-out and divide – 1 pull out drawer bottom</p>	REF. NO.	FOR:
	Vanity basin	39 585 00H
 <p>– 1 drawer top with bottle-trap cut-out and divide – 2 pull out drawers bottom</p>	REF. NO.	FOR:
	Vanity basin	39 585 00H

height: 600 mm
depth: 440 mm
width: 750 mm
WWIH...075

height: 720 mm
depth: 440 mm
width: 750 mm
WWII...075

height: 600 mm
depth: 440 mm
width: 950 mm
WWIH...095

height: 720 mm
depth: 440 mm
width: 950 mm
WWII...095

Description	Ref. No.	Size
ALU LEGS FOR EURO CERAMIC VANITIES		
 <p>– 2 alu legs</p>	REF. NO.	FOR:
	ACBF...004	
 <p>– 2 alu legs</p>	REF. NO.	FOR:
	ACDD...008	

height: 150 mm
depth: 80 mm
width: 40 mm

height: 115 mm
depth: 80 mm
width: 80 mm



GERNERAL INFORMATION

Delivery time: 2 – 4 days, ex works

Wood grain:


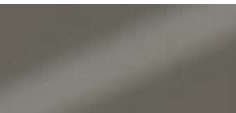
Front units: vertical / carcass: vertical
Front vanity units: horizontal / carcass: vertical

It is not possible to guarantee a continuous grain pattern due to the process used. Small color variances are material based.

ACRYLIC FRONT HIGH GLOSS WITH LASER EDGE | CARCASS EXTERIOR: MELAMINE GLOSS

(PN479)




from inside to outside:
MDF | Acrylic | Laser edge

	
F3863 White high gloss Shelf / back: Anthracite grey Carcass No. K0040	F3864 Grey high gloss Shelf / back: Anthracite grey Carcass No. K0439

MELAMINE FRONT | CARCASS: MELAMINE

(PN479)

from inside to outside:
E1-particle board | Melamine | Edge band

		
F3865 Cashmere oak decor Shelf / back: Anthracite grey Carcass No. K0462	F3866 Flanelle oak decor Shelf / back: Anthracite grey Carcass No. K0463	F3867 Marone truffle decor Shelf / back: Anthracite grey Carcass No. K0421

HANDLE

	Bar handle Chrome G0090	Handle Chrome G0092
Length / Hole distance:	160 mm / 96 mm	296 mm / 167 mm
Length drawers from 590 mm width:	526 mm / 448 mm	296 mm / 167 mm
Installation door:	horizontal	horizontal
Installation pull out drawer, linen basket:	horizontal	horizontal

Delivery time: 2 – 4 days. Available for CUBE, ESSENCE, EURO

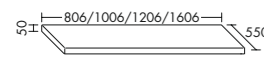
COLORS COUNTERTOP

PLEASE FILL IN QUESTIONNAIRE, PAGE: 15.

A0080 White matt	A0263 Basalt grey matt	A0283 Merino oak decor	A0270 Cashmere oak decor	A0271 Flanelle oak decor	A0306 Mokka oak decor	A0291 Frassino Cappuccino decor	A0282 Velvet Walnut decor
A0264 Marone truffle decor	A0272 Slate decor	A0294 Concrete grey					

Description	Ref. No.	Size
-------------	----------	------

COUNTERTOP HPL – HEIGHT 50 MM



- ABS edges
- incl. metal consoles

height:	50 mm
APW... depth:	550 mm
...080L width:	806 mm
...100L width:	1006 mm
...120L width:	1206 mm
...160L width:	1606 mm

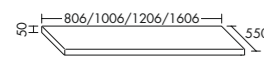
COLORS COUNTERTOP

PLEASE FILL IN QUESTIONNAIRE, PAGE: 15.

PG 1	A0066 White matt	A0144 Sand matt	A0303 Light red matt	A0067 Reed matt	A0126 Light grey matt	A0108 Grey matt	A0109 Dark grey matt	A0146 Anthracite matt
PG 2	A0031 White high gloss	A0052 Sand high gloss	A0304 Light red high gloss	A0048 Reed high gloss	A0131 Light grey high gloss	A0063 Grey high gloss	A0121 Dark grey high gloss	A0049 Anthracite high gloss

Description	Ref. No.	Size
-------------	----------	------

COUNTERTOP LACQUERED – HEIGHT 50 MM

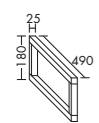


- incl. metal consoles

height:	50 mm
APW... depth:	550 mm
...0800 width:	806 mm
...1000 width:	1006 mm
...1200 width:	1206 mm
...1600 width:	1606 mm

Description	Ref. No.	Size
-------------	----------	------

CONSOLE BASE



- Chrome
- Max. weight: 70 kg

height:	180 mm
ACAD... depth:	490 mm
...006 width:	25 mm



- Chrome
- Max. weight: 70 kg

height:	180 mm
ACAD... width:	470 mm
...003 width:	30 mm

INFORMATION

Vanities for countertops and vessels of Cube, Essence, Euro see page 3/4

CHECK LIST – COUNTERTOP

COUNTERTOP INFORMATION

Ref. No.: Color No.: **A** width: mm **B** depth: mm

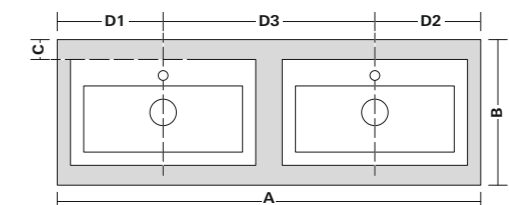
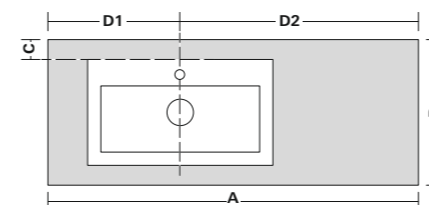
Niche installation, please specify fixed dimensions: mm No niche installation

Cut-out 1 basin 2 basins No basin cut-out Intended use:

WASHBASIN INFORMATION

Manufacturer: **GROHE** Series: Ref. No.: width: mm

Basin with tap hole Basin data sheet as an appendix Basin without hole

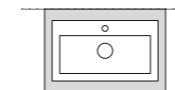


D1 Distance from left edge to centre of washbasin drain: mm

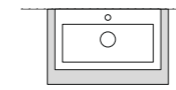
D3 Centre distance for basin: mm

D2 Distance from right edge to centre of washbasin drain: mm

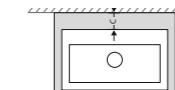
POSITION OF BASIN FROM WALL:



Centred



Flush with the wall

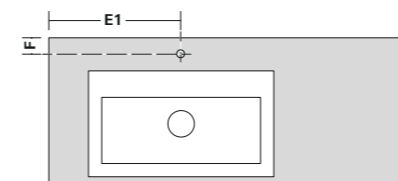


C Distance from rear edge of basin to wall mm

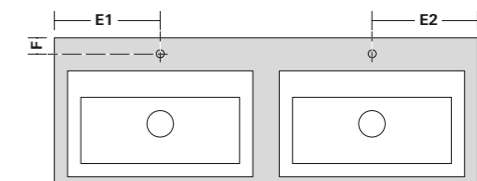
PLEASE NOTE:
Minimum distance of 110 mm to wall for upright mixers at rear of basin

MIXER INFORMATION

Manufacturer: **GROHE** Series: Ref. No.: Mixer data sheet as an appendix



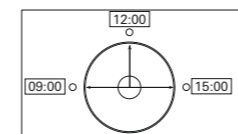
E1 Distance of mixer to edge on left: mm



E2 Distance of mixer to edge on right: mm

F Distance from edge to mixer depth: mm
Please observe minimum distance of 60 mm to the wall!

MIXER INFORMATION FOR ROUND BASINS (39 481 00H / 39 482 00H / 39 608 00H / 39 609 00H)



Mark the mixer position or specify by time.
Time:

Follow us



Grohe AG
Feldmühleplatz 15
D-40545 Düsseldorf
Germany
www.grohe.com

© 05/2019 – Copyright by GROHE

PART OF **LIXIL**