

*Pure Freude
an Wasser*

GROHE
~~~~~



# **GROHE CARE: SANITARY PLANNING FOR THE HEALTHCARE SECTOR**

2020





## TAILORED SOLUTIONS FOR THE HEALTHCARE SECTOR

Whether as a place to recover from an illness or somewhere for a loved one to spend their twilight years, healthcare establishments should have a soothing atmosphere where people feel comfortable and well cared for. However, staff shortages and outdated equipment mean that everyday life in these establishments often paints a different picture. Even though the number of care workers has increased in recent years, the care home sector is already facing a shortage of 200,000 employees. And demand is continuing to outstrip supply. At this rate, the shortage in nursing staff could grow to over 300,000 employees by 2035. Particularly in hospitals, there is often a bottleneck of projects requiring investment, with both renovations and new buildings as well as technological upgrades urgently needed. Digitalisation and improved working conditions are important steps towards reducing staff workloads and increasing the appeal of nursing professions.

At GROHE, we understand the everyday challenges that planners and operators face when it comes to choosing sanitary fittings for hospitals and retirement homes. We offer a wide range of solutions that are specially tailored to the needs of these facilities. One important aspect of those needs is hygiene. Healthcare establishments require products that are easy to clean and disinfect, and that provide few surfaces where dirt and germs can collect. "The new rimless toilets are a real improvement for us", says Martin Wolke. "In the past, our tests often discovered multi-resistant organisms under the toilet rims. That can't happen with these toilets."

The hygiene standards for operating theatres and consulting rooms are even stricter. For these settings, we offer special faucets that can be operated with an elbow or via infrared sensors, allowing doctors to wash their hands and go straight to their patients without touching anything – thus minimising the risk of spreading germs.

Bathrooms for patients and seniors also require sanitary fittings that allow users a high degree of independence. Solutions include remote controls for the toilet flush or installation systems designed to enable the mounting of support handles.

*"Good fittings alone can enable patients to use the bathroom without assistance. They also help reduce the workload of nursing staff."*

*Martin Wolke,  
Head Hygiene Specialist at the Institut für Krankenhaus-  
hygiene und Mikrobiologie (Institute of Hospital Hygiene  
and Microbiology) at the Stiftung Mathias-Spital Rheine*

Last but not least, hospitals and care homes benefit from the quality and durability of GROHE products. The high volume of users and frequent cleaning and disinfection take a heavy toll on faucets and ceramics. We have developed a wide range of technologies to ensure that sanitary fittings continue to look as good as new for many years. That both saves money on maintenance costs and increases the sustainability of the facilities.





# GROHE CARE TABLE OF CONTENTS

|                                          |           |
|------------------------------------------|-----------|
| <b>PRODUCT HIGHLIGHTS FOR HOSPITALS</b>  |           |
| STANDARD PATIENT ROOMS                   | 6         |
| PREMIUM PATIENT ROOMS                    | 16        |
| OPERATING THEATRES AND CONSULTING ROOMS  | 28        |
| PUBLIC FACILITIES                        | 34        |
| CARE BATHROOMS                           | 42        |
| <b>PRODUCT HIGHLIGHTS FOR CARE HOMES</b> |           |
| PUBLIC FACILITIES                        | 34        |
| CARE BATHROOMS                           | 42        |
| ELDERLY CARE ROOMS                       | 48        |
| RETIREMENT HOMES                         | 54        |
| <b>PROBLEM-SOLVING EXPERTISE</b>         | <b>68</b> |



## PRODUCT HIGHLIGHTS STANDARD PATIENT ROOMS

People recovering from an illness or operation benefit from pleasant, soothing surroundings. The patient's bathroom is part of that environment. GROHE offers hospitals products that meet high standards in ergonomics, safety and hygiene. On top of that, water- and energy-saving solutions with low cleaning and maintenance requirements help lower facility running costs.

### ERGONOMIC AND CONVENIENT

User-friendly sanitary fittings are essential in patient bathrooms. For example, people with limited mobility will benefit from special wash basin faucets with easy-to-grip lever handles that are angled slightly upwards. WC flush plates with a dual-flush system enable users to select the required flush volume.

### SAFE AND HYGIENIC

Thermostats ensure the water in the shower and the wash basin remains at the selected temperature, preventing scalding due to fluctuations in the water pressure. Faucets with easy-to-clean designs, laminar flow regulators and backflow protection devices further increase the hygiene and safety of patient bathrooms.



# GROHTHERM SPECIAL FOR THE PERFECT TEMPERATURE

Grohterm Special protects patients against scalding and burns. The thermostat maintains the preferred water temperature whenever in use, while CoolTouch technology prevents the chrome surfaces from overheating. And to prevent transmission of germs even further, the Euphoria Mono hand shower provides extra safety by operating without adding air to the water.

## PRODUCT HIGHLIGHTS

- **Various models:** Shower and wash basin solutions
- **User-friendly:** Ergonomic metal wing handles are easy for people with reduced mobility to use
- **Protection against scalding and burns:** Adjustable safety stop (metal) that can be preset to between 35 °C and 43 °C; GROHE CoolTouch on all surfaces protects against burns
- **Maximum hygiene:** Thermal disinfection with handle accessory; integrated backflow protection
- **Easily prevent legionnaire's disease:** Temperature knob with 432° angle of rotation for setting the minimum supply of cold water and maximum warm water temperature enables the elimination of legionella bacteria in cold and hot water







## BAU CERAMICS

### MINIMALIST DESIGN FOR MODERN BATHROOMS

The toilets in the Bau Ceramics collection have a gently rounded shape perfectly suited to many modern bathroom designs. Another benefit is how easy the WCs are to clean. The rimless design prevents dirt and germs from collecting in hard-to-reach places.

#### PRODUCT HIGHLIGHTS

- **Various models:** Available in a range of floor-standing and wall-hung designs
- **Rimless toilet design:** Simplifies cleaning and prevents dirt from collecting under the rim
- **Quick Release seat:** Seat can be quickly removed for easy cleaning
- **Soft Close:** Lid closes onto the seat quietly and gently





# PRODUCT HIGHLIGHTS

## STANDARD PATIENT ROOMS

### THE MOST IMPORTANT FEATURES

- **Convenient, user-friendly features** on every tap
- Special faucets with **ergonomic metal wing handles** for ease of use
- Fittings that are easy to clean and maintain for **maximum hygiene**
- **Water-saving technologies** like GROHE EcoJoy contribute to economical and environmentally sustainable patient bathrooms
- Products with **a timeless design and great durability** extend renovation intervals
- **Installation systems with noise reduction** provide an optimally peaceful environment
- Hand showers **make showering easier** for people with reduced mobility



### PRODUCT OVERVIEW

#### WASH BASIN



**32 773 000**  
Euroeco Special  
Single-lever basin mixer,  
wall-mounted  
projection 257 mm



**34 666 000**  
Grotherm Special  
Thermostat basin mixer,  
wall-mounted



**+ 13 378 000**  
Cast swivel spout, 115 mm



**+ 13 380 000**  
Cast swivel spout, 175 mm



**32 762 000**  
Euroeco Special  
Single-lever basin mixer,  
lever length 120 mm



**32 765 000**  
Euroeco Special  
Single-lever basin mixer,  
lever length 120 mm



**34 487 000**  
Grotherm Micro  
Thermostatic scalding protection



**47 533 000**  
Grotherm Micro  
Connection set



**36 454 000**  
Eurosmart Cosmopolitan E Special  
Infra-red electronic wall basin mixer  
with thermostatic temperature control  
projection 287 mm



**36 455 000**  
Eurosmart Cosmopolitan E Special  
Infra-red electronic wall basin mixer  
with thermostatic temperature control  
projection 255 mm

### BAU CERAMICS



**39 427 000**  
Wall-hung WC,  
wash down, rimless



**39 493 000**  
WC seat with lid  
Soft Close

### SHOWER



**36 457 000**  
Eurosmart Cosmopolitan E Special  
Infra-red electronic shower mixer  
with thermostatic temperature control



**36 456 000**  
Eurosmart Cosmopolitan E Special  
Infra-red electronic  
for concealed thermostatic shower



PRODUCT OVERVIEW  
SHOWER



**34 667 000**  
Grotherm Special  
Thermostatic shower mixer,  
wall-mounted  
with pre-adjustable safety stop  
between 35 °C and 41 °C



**29 094 000 + 35 500 000**  
Grotherm Special  
Thermostatic shower mixer  
with safety stop between  
35 °C and 43 °C  
+ GROHE Rapido T thermostatic  
mixer for concealed installation



**27 057 000**  
Rainshower  
Shower outlet elbow, 1/2"  
with round escutcheon,  
protected against backflow



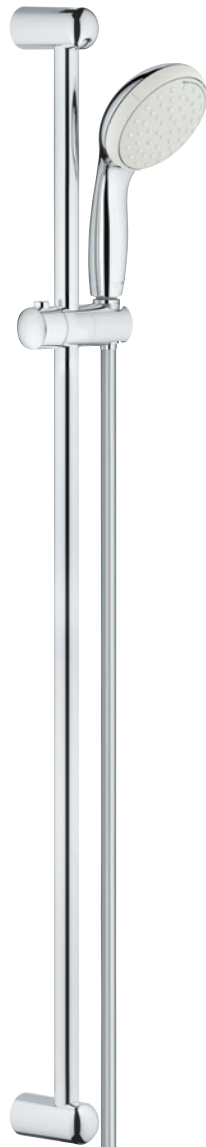
**28 988 000**  
Drain down valve  
**28 874 000**  
Tee connection



**47 994 000**  
Grotherm Special  
Temperature unlocking handle  
for thermal disinfection



**27 267 001**  
Euphoria 110 Mono  
Shower rail set  
1 spray pattern



**26 163 001**  
Tempesta 100  
Shower rail set  
2 spray patterns

S-SIZE FLUSH PLATES  
FOR GREATER FREEDOM OF CHOICE

The smaller versions of the Skate Cosmopolitan, Nova Cosmopolitan and Skate Air flush plates are unobtrusive in small patient bathrooms. With numerous colours and designs to choose from, they are the perfect solution for every bathroom.

PRODUCT HIGHLIGHTS

- **Three designs:** Round, oval and rectangular
- **Twelve colours:** Including Chrome, Alpine White and Cool Sunrise
- **Easy installation:** Fixings with invisible magnets
- **Water-saving:** Select the flush volume you need with the dual-flush system



PRODUCT OVERVIEW  
WC



**38 732 000**  
Skate Cosmopolitan  
**38 732 000** Chrome  
**38 732 SH0** Alpine White  
**38 732 P00** Matt Chrome

Other colours available



**37 601 000**  
Nova Cosmopolitan S  
**37 601 000** Chrome  
**37 601 SH0** Alpine White  
**37 601 P00** Matt Chrome

Other colours available



**38 564 000**  
Skate Air  
**38 564 000** Chrome  
**38 564 SH0** Alpine White



## PRODUCT HIGHLIGHTS

# PREMIUM PATIENT ROOMS

Wards offering an upscale ambience have become a common feature in many modern hospitals. They are aimed at patients who are privately insured or able to pay for a premium service; some patients may even have travelled from abroad for treatment. Instead of an impersonal hospital environment, these patients expect to stay in rooms more reminiscent of first-class hotels. As a supplier of complete bathroom solutions, GROHE has a wide range of products for bathrooms in premium patient rooms that meet the highest standards of style and functionality.

### HARMONIOUS AND LUXURIOUS

Bathrooms with perfectly coordinated fixtures create an impression of overall harmony. It is important that the ceramic fittings and faucets provide a unified appearance. This effect is usually achieved through the use of complete bathroom collections. They make planning easier for architects while also allowing them the freedom to add their own touches.

### INNOVATIVE AND USER-FRIENDLY

Convenient fittings allow patients to be as independent as possible in the most private part of their hospital room. Wash basins with touchless taps activated by the motion of a hand and smart shower systems with innovative controls facilitate daily bathing for patients.



# ESSENCE & EURO CERAMICS

## FOR AN EXCEPTIONAL AESTHETIC

GROHE’s Euro and Essence ceramic collections bring timeless elegance to patient bathrooms. The Euro collection offers an impressive selection of flowing shapes, while Essence’s slender profiles create an airy and calming design scheme. The fittings in both collections feature compact dimensions, making them ideal for smaller floorplans.

**PRODUCT HIGHLIGHTS**

- **Complete collections** with a range of wash basin, WC and bidet models; Essence also includes bath tubs
- **Rimless toilets** improve hygiene
- **PureGuard technology** prevents dirt and germs from adhering to surfaces
- Compatible with various GROHE faucets thanks to **GROHE Perfect Match**





# GROHE SENSIA IGS

## FOR A FRESH, SOOTHING FEELING

For people with reduced mobility, going to the toilet can be a real challenge. Sensia IGS shower toilets promote independence in this private, sensitive area while also reducing nursing staff workloads. In addition to this, they improve patient hygiene by providing thorough yet gentle cleansing with water rather than paper.

### PRODUCT HIGHLIGHTS

- **Intuitive controls:** Central push-and-turn controls on the side of the WC; additional touchscreen remote control
- **Personalised settings:** A wide range of settings for temperature, spray pattern, and shower arm position, with up to four programmable user profiles
- **Meets high standards of hygiene:** Automatic cleaning of the shower arm before and after every use; programmes for regular thermal cleaning using the water system and descaling
- **High-quality materials:** All-ceramic WC with dirt-repellent, non-stick finish, and a controller made of real metal







## EUPHORIA SMARTCONTROL FOR PERSONALISED SHOWERS

In many cases, taking a soothing shower promotes patient wellbeing. The Euphoria SmartControl shower system allows users to enjoy a warm shower just the way they like it – with pressure ranging from gentle summer rain to an invigorating massage. The large Rainshower head shower has two spray pattern options corresponding to different pressure preferences. The smart controls are intuitive to use – just press, turn, and shower.

### PRODUCT HIGHLIGHTS

- **Intuitive controls** thanks to clear symbols
- Round or square **head showers with multiple spray patterns**
- **Protection against scalding** with TurboStat technology
- Surface-mounting suitable for **retrofitting**





# PRODUCT HIGHLIGHTS

## PREMIUM PATIENT ROOMS

### THE MOST IMPORTANT FEATURES

- **Complete bathroom collections** for a stylish atmosphere and maximum comfort
- Electronics **increase independence** for people with physical disabilities
- Faucets with a high spout for **greater freedom of movement** at the wash basin
- **Smart shower systems** with intuitive controls for personalised showers
- **Rain showers increase patient wellbeing** during convalescence
- Innovative technologies **prevent the spreading of germs** in patient bathrooms
- **Rimless toilets** leave no corners or crevices for dirt to collect in
- Hygienic surfaces with an **easy-to-clean antibacterial finish** for optimum bathroom hygiene
- **Matching accessories** for the convenient storage of bathroom utensils



**36 440 000**  
Eurocube E  
Infra-red electronic basin mixer  
with mixing device  
and adjustable temperature limiter

### PRODUCT OVERVIEW

#### WASH BASIN



**23 564 003**  
Eurostyle  
S-Size  
Single-lever basin mixer  
with pop-up waste set



**23 569 003**  
Eurostyle  
L-Size  
Single-lever basin mixer  
with pop-up waste set



**23 325 000**  
Eurosmart Cosmopolitan  
M-Size  
Single-lever basin mixer  
with pop-up waste set



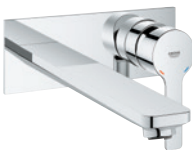
**23 590 001**  
Essence  
S-Size  
Single-lever basin mixer  
smooth body  
with pop-up waste set



**23 462 001**  
Essence  
M-Size  
Single-lever basin mixer  
with pop-up waste set



**23 106 001**  
Lineare  
S-Size  
Single-lever basin mixer  
smooth body  
with pop-up waste set



**23 444 001 + 23 571 000**  
Lineare  
L-Size  
2-hole basin mixer, wall-mounted  
projection 207 mm  
+ separate concealed body  
**19 409 001 + 23 571 000**  
M-Size, 149 mm  
+ separate concealed body



**13 960 000**  
Flow straightener  
for faucets with M24 x 1  
external thread

### ACCESSORIES



**40 447 001**  
Essentials  
Glass with holder



**40 448 001**  
Essentials  
Soap dispenser with holder



**40 865 000**  
Selection Cube  
Holder



**40 806 000**  
Selection Cube  
Soap dish



**40 367 001**  
Essentials  
Toilet paper holder



**40 365 001**  
Essentials  
Towel ring



**40 688 001**  
Essentials  
Towel rail, 450 mm



**40 364 001**  
Essentials  
Robe hook

- Colour options:**
- |                       |                           |                          |                            |                      |
|-----------------------|---------------------------|--------------------------|----------------------------|----------------------|
| 00   StarLight Chrome | GL   Cool Sunrise         | DA   Warm Sunset         | A0   Hard Graphite         | BE   Polished Nickel |
| DC   SuperSteel       | GN   Brushed Cool Sunrise | DL   Brushed Warm Sunset | AL   Brushed Hard Graphite | EN   Brushed Nickel  |
| LS   MoonWhite        |                           |                          |                            |                      |



PRODUCT OVERVIEW  
SHOWER



**24 078 000 + 35 600 000**  
Grohtherm  
Thermostatic shower mixer  
for 1 outlet  
with shut off valve  
+ GROHE Rapido SmartBox



**24 075 000 + 35 600 000**  
Grohtherm  
Thermostatic shower mixer  
for 1 outlet  
with shut off valve  
+ GROHE Rapido SmartBox



**35 600 000**  
GROHE Rapido SmartBox  
Universal rough-in box



**26 411 000**  
Tempesta 210  
Head shower set



**26 052 000**  
Rainshower Cosmopolitan 210  
Head shower set



**27 354 000**  
Euphoria 110 Mono  
Wall holder set



**26 250 000**  
Rainshower SmartControl  
System 360 Duo



**27 296 002**  
Euphoria  
System 260



**26 507 000**  
Euphoria SmartControl  
System 310 Duo

EURO & ESSENCE WCs  
FOCUS ON HYGIENE

The toilets in the Euro and Essence ceramic collections help hospitals implement the highest hygiene standards. Smart solutions ensure that the WCs are easy to clean and prevent germs and dirt from collecting.

PRODUCT HIGHLIGHTS

- **Triple Vortex flush:** A powerful vortex thoroughly cleans the entire surface of the Euro WC's ceramic bowl
- **Quick Release seat:** Fast removal for easy and thorough cleaning
- **Wall-hung:** For easy cleaning of the floor below the WC
- **Soft Close:** Lid closes onto the seat gently and quietly



PRODUCT OVERVIEW  
WC



**39 328 000**  
Euro Ceramics  
Wall-hung WC,  
wash down  
**39 331 001**  
WC seat with lid  
**39 330 001**  
WC seat with lid  
Soft Close  
**39 554 000**  
Wall-hung WC set,  
rimless



**39 111 SH0**  
GROHE Sensia IGS  
Shower Toilet  
Complete System  
for concealed flushing cisterns,  
wall-hung



**39 571 00H**  
Essence Ceramics  
Wall-hung WC,  
wash down, rimless  
**39 576 000**  
WC seat with lid  
**39 577 000**  
WC seat with lid  
Soft Close



## PRODUCT HIGHLIGHTS OPERATING THEATRES AND CONSULTING ROOMS

Hygiene requirements in the areas of a hospital where patients are treated and operated on are especially high. The risk of spreading germs must be kept to an absolute minimum. On top of this, the ergonomics of the equipment used make a big difference to staff. GROHE supports everyday hospital operations by offering tailored solutions that are designed especially for operating theatres and consulting rooms and meet the highest standards of durability, user-friendliness and cost-effectiveness.

### FUNCTIONAL AND FIT FOR PURPOSE

Sterile hands are crucial – not just in operating theatres, but also in consulting rooms. Special faucets enable medical staff to attend to patients immediately after washing their hands without touching anything else. One option is for medical staff to operate a long lever handle with their elbow; electronic faucets operated via infrared sensors are another solution.

### RELIABLE AND EFFICIENT

Thermostatic faucets ensure that the desired water temperature is maintained and prevent the maximum temperature from being exceeded. Products that enable easy thermal disinfection and automatically flush the pipes at regular intervals further increase protection against germs.



# GROHTHERM SPECIAL THERMOSTATIC BASIN MIXER DESIGNED FOR MEDICAL SETTINGS

The Grohtherm Special thermostatic basin mixer is designed for sterile handwashing. It features an extra-long lever handle that hospital staff can operate with their elbow. The water temperature can be preset using the thermostat button, and an integrated laminar flow regulator prevents bacteria from the surrounding air being drawn into the water.

## PRODUCT HIGHLIGHTS

- **Hygienic controls:** Long lever handle for elbow control
- **Safe handling:** Thermostat maintains a constant preset water temperature
- **Customisable:** Different spout lengths and shapes available
- **Easy to clean:** Smooth lines with no crevices for dirt to collect in





# PRODUCT HIGHLIGHTS

## OPERATING THEATRES AND CONSULTING ROOMS

### THE MOST IMPORTANT FEATURES

- Electronic faucets for **touchless activation**
- **Thermostatic technology** for safe and convenient water usage
- Simple handle removal facilitates **thermal disinfection**
- Programmable systems for **automatic flushing** – even in areas that are rarely used
- Smooth lines without corners **make cleaning easier**
- **Laminar flow regulators** prevent germs from being drawn into the water from the air
- **Minimal aerosol formation** reduces the risk of spreading germs
- **Power supply driver** for connecting to the mains
- **Compact size** leaves plenty of room to mount dispensers



**32 795 000**  
Euroeco Special  
Single-lever safety basin mixer,  
wall-mounted  
projection: 204 mm



**32 792 000**  
Euroeco Special  
Single-lever safety basin mixer,  
wall-mounted  
projection: 197 mm



**32 793 000**  
Euroeco Special  
Single-lever safety basin mixer,  
wall-mounted  
projection: 256 mm



### PRODUCT OVERVIEW



**32 789 000**  
Euroeco Special  
Single-lever safety basin mixer



**32 790 000**  
Euroeco Special  
Single-lever safety basin mixer



**36 422 000**  
Eurosmart Cosmopolitan E  
L-Size  
Infra-red electronic basin mixer  
with mixing device and  
adjustable temperature limiter



**36 207 001**  
Europlus E  
Infra-red electronic basin mixer  
with mixing device and  
adjustable temperature limiter



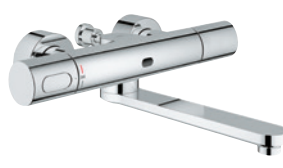
**34 020 001**  
Grotherm Special  
Thermostat basin mixer



**36 454 000**  
Eurosmart Cosmopolitan E Special  
Infra-red electronic wall basin mixer  
with thermostatic temperature control  
projection: 287 mm



**36 455 000**  
Eurosmart Cosmopolitan E Special  
Infra-red electronic wall basin mixer  
with thermostatic temperature control  
projection: 255 mm



**36 414 000**  
Eurosmart Cosmopolitan E Bluetooth®  
Infra-red electronic wall basin mixer  
with thermostatic temperature control  
projection: 287 mm



**36 334 SD0**  
Eurosmart Cosmopolitan E  
Infra-red electronic wall basin tap  
without mixing device



**36 273 000**  
Euroeco Cosmopolitan E  
Infra-red electronic wall basin tap  
without mixing device



**36 412 000**  
Eurosmart Cosmopolitan E Bluetooth®  
Infra-red electronic wall basin mixer  
with mixing device and  
adjustable temperature limiter



**36 407 001**  
Remote control



**36 337 000**  
Euroeco Cosmopolitan E  
Concealed mounting box



**36 336 000**  
Eurosmart Cosmopolitan E  
Concealed mounting box



## PRODUCT HIGHLIGHTS PUBLIC FACILITIES

The publicly accessible facilities in hospitals and retirement homes are heavily frequented during visiting hours. GROHE helps operators equip these rooms with products that meet the high standards of design, comfort and sustainability required – whilst also being extremely durable.

### TOUCHLESS AND WATER-SAVING

Electronic faucets offer a number of advantages in public facilities. Because they are controlled via infrared sensors, they prevent the transmission of bacteria and viruses from one person to another at wash basins, WCs and urinals. In addition to this, their integrated water-saving technology helps to reduce costs and conserve valuable resources.

### TAILORED AND EFFICIENT

In order to prevent water from splashing or overflowing, the bowl and flush settings on a WC need to be perfectly matched. This is especially the case for rimless toilets. Installation systems that allow the flow rate to be easily re-adjusted protect the operators of public facilities in hospitals from costly subsequent maintenance.



# TECTRON SKATE

## MAXIMUM HYGIENE FOR WCS AND URINALS

All it takes to get the water flowing on the Tectron Skate infrared electronic sensor is a wave of the hand. The flat flush plates for WCs and urinals offer little opportunity for vandalism and are easy to clean. Power can be supplied either from the mains or from a battery.

### PRODUCT HIGHLIGHTS

- **Flat design:** Limited opportunities for damage by vandalism
- **Infrared technology:** Touchless activation; flush stops automatically
- **Adjustable flush volume:** Flush volumes from 3 to 9 liters of water
- **Easily programmable:** A large number of functions can be set individually using the remote control



- **Hygienic and safe:** Flush plates with infrared sensors; flat surfaces provide limited opportunities for vandalism



- **Sophisticated design:** Tectron Skate with a smooth surface or Tectron Surf with a wave-effect design; available in chrome and stainless steel



- **Practical presets:** Seven easily retrievable and comprehensive flush programmes



- **Low-energy electronics:** The long-life battery guarantees a long service life (7 years at approximately 150 operations per day)



# ESSENCE E

## MODERN ELEGANCE

The cylindrical shapes of the Essence E collection make a great design statement in the wash basins of public bathroom facilities. The collection combines an appealing look with high functionality: the GROHE remote control not only enables a wide range of settings, but also allows operators to access usage data.

### PRODUCT HIGHLIGHTS

- **Various models:** Wall- and deck-mounted taps; with or without premixed water
- **Keeps germ transmission to a minimum:** Touchless controls, laminar flow regulators, backflow protection
- **Bidirectional communication:** Easy retrieval of usage data
- **Low operating costs:** Seven preset programmes – including automatic flushing and thermal disinfection





# PRODUCT HIGHLIGHTS

## PUBLIC FACILITIES

### THE MOST IMPORTANT FEATURES

- Maximum hygiene thanks to the **touchless activation** of wash basins, WCs and urinals
- Urinal flushes can be **fully automated with a temperature sensor**
- **Complete collections** for the perfect coordination of ceramics and faucets
- **Easy to clean** thanks to rounded designs
- **Easy retrieval of usage data** to help tailor the operation of public facilities to demand
- **Long-lasting sanitary fittings** for long refurbishment intervals
- Innovative technologies for **reduced water consumption without loss of convenience**
- **Forward-looking functions** that facilitate settings adjustments



### PRODUCT OVERVIEW

#### WC/URINAL



**39 368 000**  
Temperature sensor  
for Urinal



**38 698 SD1**  
Tectron Skate  
Infra-red electronic  
for WC flushing cistern



**37 324 001**  
Tectron Skate  
Infra-red electronic  
for Urinal



**38 804 000**  
Nova Cosmopolitan  
Flush plate



**39 596 000**  
Rapid SLX  
Element for WC  
with integrated socket  
and shower toilet connection  
1.13 m installation height



**39 351 000**  
Bau Ceramics  
Wall-hung WC set,  
wash down, rimless



**38 786 001**  
Rapid SL  
Element for Urinal  
with GROHE Rapido U  
for manual actuation or Tectron  
infra-red electronic 6 V or 230 V  
1.13 m and 1.30 m installation height



**39 438 000**  
Bau Ceramics  
Urinal

### WASH BASIN



**36 445 000**  
Essence E  
Infra-red electronic basin mixer  
with mixing device and  
adjustable temperature limiter



**36 207 001**  
Europlus E  
Infra-red electronic basin mixer  
with mixing device and  
adjustable temperature limiter



**36 325 001**  
Eurosmart Cosmopolitan E  
Infra-red electronic basin mixer  
with mixing device and  
adjustable temperature limiter



**36 269 000**  
Euroeco Cosmopolitan E  
Infra-red electronic basin tap



**36 233 000**  
Eurodisc SE  
Self-closing basin mixer  
with mixing device and  
adjustable temperature limiter



**39 420 000**  
Bau Ceramics  
Wash basin, 65 cm





## PRODUCT HIGHLIGHTS CARE BATHROOMS

A well-equipped care bathroom can make carrying out daily personal hygiene tasks easier for both patients and hospital or care home staff. When planning a bathroom, the goal should be to ensure maximum independence for people with reduced mobility whilst reducing staff workloads with smart solutions. In addition to avoiding obstructions like thresholds and barriers, this includes installing sanitary fittings that increase safety and ease of use in the bathroom.

### FLEXIBLE AND RELIABLE

Going to the toilet with as little assistance as possible is very important to people in need of care. GROHE products for care bathrooms support this desire. Like backrests and grab rails, flush plates with infrared or wireless electronics increase the independence of patients.

### PRACTICAL AND LOW-MAINTENANCE

Protecting patients from harmful germs is of utmost importance in all healthcare facilities. That's why they are required to carry out regular thermal disinfection and tests for legionnaire's disease, as well as the cleaning and replacement of backflow protection fittings. GROHE has designed its products to significantly reduce the effort needed to complete these tasks in retirement homes and hospitals.



# RAPID SL WITH GRAB RAILS FOR SAFE USAGE

We all want our toilet experiences to be as discreet and private as possible. A backrest and grab rails give people with disabilities the stability they need to go to the toilet by themselves. The Rapid SL installation system is set up for these aids and provides an ideal way of mounting them behind the wall.

## PRODUCT HIGHLIGHTS

- **Accessible design:** Built to enable the installation of backrests and grab rails
- **Pneumatic waste valve:** Choose between the dual-flush system or start & stop technology
- **Easy installation:** Steel frame is fully pre-assembled
- **Range of installation options:** Front-wall or wall-stud installation; quick adjustments with height lock





# PRODUCT HIGHLIGHTS

## CARE BATHROOMS

### THE MOST IMPORTANT FEATURES

- Ergonomically designed products facilitate usage by **patients and nursing staff**
- Grab rails ensure **safety** on the WC and at the wash basin
- **Compatibility with grab rails** from all major manufacturers facilitates installation
- Shower heads with **low aerosol build-up** prevent the transmission of germs from the air
- Easily accessible or touchless WC flush plates **increase ease of use**
- Pre-prepared installation systems enable the **installation of accessible wash basins**
- **Low-maintenance systems** support operators
- Water- and energy-saving technologies **reduce operational costs**



### PRODUCT OVERVIEW

#### SHOWER & BATH



**34 667 000**  
Grotherm Special  
Thermostatic shower mixer,  
wall-mounted  
with pre-adjustable safety stop  
between 35 °C and 41 °C



**34 665 000**  
Grotherm Special  
Thermostatic bath mixer,  
wall-mounted  
with pre-adjustable safety stop  
between 35 °C and 41 °C



**34 143 003**  
Grotherm 1000  
Thermostatic shower mixer,  
wall-mounted



**34 155 003**  
Grotherm 1000  
Thermostatic bath mixer,  
wall-mounted



**34 776 000**  
Grotherm 1000 Performance  
Thermostatic shower mixer,  
wall-mounted



**34 779 000**  
Grotherm 1000 Performance  
Thermostatic bath mixer,  
wall-mounted



**29 094 000 + 35 500 000**  
Grotherm Special  
Thermostatic shower mixer  
with safety stop between  
35 °C and 43 °C  
+ GROHE Rapido T thermostatic  
mixer for concealed installatio



**28 002 000**  
Relexa 70  
Sports head shower,  
1 spray

#### WASH BASIN

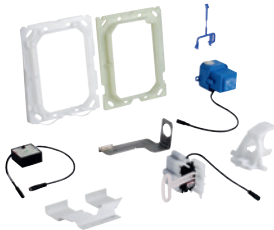


**38 625 001**  
Rapid SL  
Element for wash basins  
with odour trap

#### WC



**39 140 000**  
Rapid SL  
Element for WC  
with fixing element for back support  
and support rails,  
1.13 m installation height



**38 778 000**  
Radio Transmitter  
for an additional flush plate  
for manual actuation  
for flushing cistern GD 2 /  
Rapid SL 1.13 m only



**38 564 000**  
Skate Air  
Flush plate  
for single flush actuation  
for vertical installation



**37 419 SD0**  
Tectron Skate  
Infra-red electronic  
for WC flushing cistern  
with additional manual actuation



**38 759 SD0**  
Skate Air  
Wireless electronics





## PRODUCT HIGHLIGHTS ELDERLY CARE ROOMS

People with a wide variety of physical and mental disabilities live in retirement homes, and a resident's condition may change as they get older. For that reason, rooms in elderly care facilities should be able to meet every potential need. As a long-time partner of architects working in the healthcare segment, GROHE understands these special requirements and offers customised solutions to meet them.

### PRACTICAL AND HELPFUL

A heavy workload spread across a small number of employees is an everyday reality in care homes. Every bit of support available lightens the load. Bathrooms equipped with grab rails help elderly residents use them as independently as possible. Shower toilets that clean sensitive skin with water and dry it with warm air also reduce the workload for nursing staff.

### INTUITIVE AND CONVENIENT

Whether on the wash basin or in the shower, sanitary fittings in care homes should be hassle-free and easy to use. Electronic faucets and WC flush plates with infrared sensors, as well as thermostatic shower mixers with ergonomic handles, are just some of the possible solutions. The latter also increase safety in the bathroom by reliably protecting users against scalding and burns.



# RAPID SLX

## FOR FORWARD-LOOKING PLANNING

The GROHE Rapid SLX installation element is already prepared for future changes to patient bathrooms. For example, WCs and flush plates can be easily and quickly replaced.

**PRODUCT HIGHLIGHTS**

- **EasyConnect:** Maximum flexibility for selecting and installing flush plates
- **Generous access opening:** All connections are easily accessible
- **Integrated flow rate throttle:** Adjustment of the flow rate possible at any time with no need to demount the waste valve
- **Easy retrofitting of shower toilets:** Electrical sockets and additional water connections are pre-installed





# PRODUCT HIGHLIGHTS

## ELDERLY CARE ROOMS

### THE MOST IMPORTANT FEATURES

- **Prevention of germ transmission** through touchless controls, as well as through easy-to-clean and self-cleaning solutions
- **Less work for nursing staff** thanks to sanitary fittings that promote independence
- Shower toilets **increase hygiene and wellbeing**
- Flush plates with electronic and manual activation for **customised use**
- Faucets with **pull-out aerator sprays** facilitate easy care at the wash basin
- Thermostats offer **effective protection against scalding** in the shower
- Low-maintenance and water-saving solutions support the **cost-effective running** of care facilities



### PRODUCT OVERVIEW

#### WASH BASIN



**33 265 002**  
Eurosmart  
S-Size



**23 323 001**  
Eurosmart  
M-Size



**23 537 002**  
Eurosmart  
L-Size



**23 819 000**  
Eurosmart Cosmopolitan  
S-Size



**23 326 000**  
Eurosmart Cosmopolitan  
M-Size



**32 762 000**  
Euroeco Special  
Single-lever basin mixer,  
lever length 120 mm



**32 765 000**  
Euroeco Special  
Single-lever basin mixer,  
lever length 120 mm

### SHOWER



**29 094 000 + 35 500 000**  
Grohtherm Special  
Thermostatic shower mixer  
with safety stop between  
35 °C and 43 °C  
+ GROHE Rapido T thermostatic  
mixer for concealed installation



**34 143 003**  
Grohtherm 1000  
Thermostatic shower mixer,  
wall-mounted



**34 667 000**  
Grohtherm Special  
Thermostatic shower mixer,  
wall-mounted  
with pre-adjustable safety stop  
between 35 °C and 41 °C



**26 161 001**  
Tempesta 100  
Hand shower  
2 spray patterns

### WC



**39 140 000**  
Rapid SL  
Element for WC  
with fixing element for back support  
and support rails,  
1.13 m installation height



**38 559 001**  
Rapid SL  
Fixing element  
to fix support for the disabled,  
1.13 m installation height



**39 596 000**  
Rapid SLX  
Element for WC  
with integrated socket  
and shower toilet connection,  
1.13 m installation height



## PRODUCT HIGHLIGHTS RETIREMENT HOMES

Two things elderly people living in retirement homes want are to feel at home and to receive the support they need. On top of that, it's important for any individual needs resulting from physical and mental conditions to be taken into consideration. Planners who rely on GROHE fittings for bathrooms and kitchens will find a wide range of options that allow them to combine an appealing atmosphere with a high level of safety and user-friendliness.

### INNOVATIVE AND SMART

For many elderly people, digital products are no longer a challenge. Once people have tried them, they appreciate the convenience that smart applications offer in everyday life. For example, digital faucets display the precise water temperature – making it easier to find exactly the right setting. Smart technologies also provide shower toilets with many helpful functions.

### FILTERED AND CHILLED

Drinking enough water is important for your health at any age. Water systems can help older people ensure that they are drinking as much as they need every day. It's now possible to get delicious sparkling water straight from the kitchen tap – with exactly the right amount of carbonation.



# SENSIA ARENA

## GENTLE CARE

The Sensia Arena shower toilet does more than just provide elderly users with a maximum level of comfort and hygiene. It also increases their independence in the most private place in the bathroom – and reduces the workload of nursing staff in doing so. The shower toilet gently cleans the skin with water and dries it with warm air for a fresh, clean feeling all day long. Users can easily save and select their preferred cleaning setting from several options using the remote control or app.

### PRODUCT HIGHLIGHTS

- **Twin shower arms:** Two separate shower arms for standard shower and lady shower with a variety of spray patterns
- **Self-cleaning:** The AquaCeramic coating prevents dirt from gathering on the bowl; the shower arms are automatically rinsed after every use
- **Plasmacluster ion technology:** Ions in the air bind to bacteria for a germ-free WC environment
- **Easy to operate without assistance:** Operate using the remote control, smartphone app, or control panel on the side of the WC





# KITCHENS IN RETIREMENT HOMES

## RETIREMENT HOMES

Small kitchenettes in retirement home rooms increase the residents' sense of independence. They allow residents to make themselves a cup of tea or prepare a plate of fruit outside of regular meal times. Water systems like those offered by GROHE also guarantee unlimited access to delicious still or sparkling drinking water straight from the tap.

Designers should choose kitchen fittings that are easy for people with physical limitations to use for these spaces. For example, such fittings might include kitchen faucets with a long lever handle that is easy to grip. Perfectly coordinated faucets and sinks also prevent water splashes, increasing the kitchenette's ease of use. Last but not least, their aesthetic design is also important. As the kitchen is often integrated into the living space, its fittings should blend seamlessly into the overall ambience.







## GROHE BLUE HOME

### YOUR OWN WATER SOURCE

GROHE Blue Home brings you your ideal drinking water straight from the tap: filtered and chilled, with a choice of still, medium, or sparkling water. This smart water system has several advantages for retirement homes. For example, it ensures a constant supply of drinking water without the need to store cases of bottled water. On top of that, GROHE Blue has been proven to be more sustainable than bottled water.

#### PRODUCT HIGHLIGHTS

- **Various models:** Three different spout shapes; choice of two colours in either a matt or polished finish
- **Space-saving construction:** Designed for installation in smaller cabinet spaces
- **Separate water supplies:** Filtered and unfiltered water from separate pipes
- **Sustainable:** Studies have shown that GROHE Blue produces approximately 50 % fewer CO<sub>2</sub> emissions than bottled mineral water





## GROHTHERM SPECIAL SAFETY AND ERGONOMICS FOR SHOWERS

The concealed model of the Grohtherm Special provides residents of retirement homes with effective protection against scalding: the shower features a safety stop with which the maximum water temperature can be set. Ergonomic wing handles also make it easier for elderly people with reduced motor skills to shower independently.

### PRODUCT HIGHLIGHTS

- **Space to move:** The slim design of the shower faucets makes them ideal for small bathrooms
- **Easy to use:** Shower trim with wing handles for water flow and temperature
- **Very safe:** Safety stop can be set between 35 °C and 43 °C, preventing the dial from being turned beyond those temperatures
- **Low-maintenance:** Easy thermal disinfection using the accessory cap



# PRODUCT HIGHLIGHTS

## RETIREMENT HOMES

### THE MOST IMPORTANT FEATURES

- Products with an appealing design for a **cosy atmosphere** in the bathroom and kitchen
- Taps with medium and high spouts for **convenience at the wash basin and kitchen sink**
- **Maximum hygiene** thanks to innovative surface finishes and self-cleaning systems
- **Thermostats** provide a constant water temperature and scald protection
- **Smart solutions** make everyday life easier for elderly residents
- Shower toilets guarantee **all-round cleanliness and care** – even with reduced mobility
- Kitchen water systems ensure a constant supply of **delicious drinking water**
- Cost-efficient and environmentally sustainable operation of retirement homes through the use of **resource-saving technologies**



### PRODUCT OVERVIEW

#### SHOWER



**24 079 000**  
Grotherm  
Thermostatic shower mixer  
for 2 outlets  
with integrated shut off/diverter valve



**24 075 000**  
Grotherm  
Thermostatic shower mixer  
for 1 outlet  
with shut off valve



**+ 35 600 000**  
GROHE Rapido SmartBox  
Universal rough-in box



**+ 35 600 000**  
GROHE Rapido SmartBox  
Universal rough-in box



**27 227 001**  
Euphoria 110 Champagne  
Shower rail set  
3 spray patterns



**26 508 000**  
Euphoria SmartControl  
System 310 Cube Duo



**34 667 000**  
Grotherm Special  
Thermostatic shower mixer,  
wall-mounted  
with pre-adjustable safety stop  
between 35 °C and 41 °C



**34 143 003**  
Grotherm 1000  
Thermostatic shower mixer,  
wall-mounted



**34 776 000**  
Grotherm 1000 Performance  
Thermostatic shower mixer,  
wall-mounted



**29 094 000 + 35 500 000**  
Grotherm Special  
Thermostatic shower mixer  
with pre-adjustable safety stop  
between 35 °C and 41 °C  
+ GROHE Rapido T thermostatic  
mixer for concealed installatio

#### WASH BASIN



**23 327 000**  
Eurosmart Cosmopolitan  
M-Size



**23 324 001**  
Eurosmart  
M-Size



**32 612 003**  
Plus  
S-Size



**23 844 003**  
Plus  
L-Size



**36 453 000**  
Bau Cosmopolitan E  
Infra-red electronic basin mixer  
with mixing device  
and temperature limiter



**33 552 002**  
Eurostyle Cosmopolitan  
S-Size



**23 043 003**  
Eurostyle Cosmopolitan  
L-Size



**34 487 000**  
Grotherm Micro  
Thermostatic scalding protection



# PRODUCT HIGHLIGHTS

## RETIREMENT HOMES

### PRODUCT OVERVIEW CERAMICS



**39 567 00H**  
Essence  
Vanity basin, wall hung  
with PureGuard hygiene coating,  
80 cm



**39 335 000**  
Euro Ceramics  
Wash basin, wall hung,  
60 cm  
**39 335 00H**  
with PureGuard hygiene coating

### KITCHEN



**31 455 001**  
GROHE Blue Home  
C-spout Starter Kit



**30 270 000**  
Essence  
Single-lever sink mixer,  
high spout  
with pull-out dual spray



**32 168 000**  
Minta  
Single-lever sink mixer,  
with pull-out mousseur



**30 260 002**  
Eurosmart  
Single-lever sink mixer,  
low spout

### WC



**39 596 000**  
Rapid SLX



**39 354 SH1**  
GROHE Sensia Arena  
Shower toilet  
Complete system  
for concealed flushing cisterns,  
wall hung

- Colour options:**
- |                       |                           |                          |                            |
|-----------------------|---------------------------|--------------------------|----------------------------|
| 00   StarLight Chrome | GL   Cool Sunrise         | DA   Warm Sunset         | A0   Hard Graphite         |
| DC   SuperSteel       | GN   Brushed Cool Sunrise | DL   Brushed Warm Sunset | AL   Brushed Hard Graphite |





## GROHE **PROBLEM-SOLVING EXPERTISE**

"WHEN SELECTING SANITARY FITTINGS FOR THE HEALTHCARE SECTOR, WE FOCUS ON EASY-TO-CLEAN AND LOW-MAINTENANCE PRODUCTS THAT BOTH PROVIDE SAFETY – FOR EXAMPLE THROUGH SCALD PROTECTION – AND ARE ESPECIALLY DURABLE. GROHE IS ONE OF OUR PREFERRED MANUFACTURERS BECAUSE WE CONSISTENTLY HAVE GOOD EXPERIENCES WITH THEIR PRODUCTS."

*Christoph Kaufhold, Master of Engineering for Building and Energy Technology at Gödde Ingenieure GmbH*



# PROBLEM-SOLVING EXPERTISE

## HYGIENE

### HYGIENE

Every day, the operators of healthcare facilities face new challenges in complying with hygiene regulations and ensuring the safety of their residents. GROHE has kept pace with the industry's requirements for years and offers innovative solutions for effectively minimising germ build-up and transmission – including touchless faucets, easy thermal disinfection of pipes, easy-to-clean special faucets and rimless toilets with antibacterial ceramic surfaces.

### TOUCHLESS FAUCETS

Especially in hospitals and retirement homes, patients, staff and visitors need to be protected from the transmission of germs from one person to another. Touchless faucets offer the best protection against the spread of disease. The energy-saving electronics release the water when the infrared sensor detects the presence of a hand and stop the spray automatically when it is removed.

Important fields of application for this technology include consulting rooms and operating theatres, where faucets like the Eurosmart CE Special prevent the staff from coming into direct contact with potentially contaminated surfaces such as lever handles. On top of that, faucets like the Europlus E or Essence E ensure additional hygiene at wash basins in heavily frequented public facilities in hospitals. Electronic flush plates on WCs and urinals are also a great choice for preventing germ transmission in care facilities.



### EASY THERMAL DISINFECTION

The operators of healthcare facilities must also effectively prevent the development of sources of infection in their drinking water systems. One way to achieve this is through regular thermal disinfection, which rinses the pipes with hot water at 70 °C. This destroys potential pathogens like legionella and, amongst other things, removes biofilms.

Infrared faucets like the Eurosmart Cosmopolitan E enable healthcare facilities to easily carry out thermal disinfection using a practical remote control or smartphone app connected via Bluetooth®. By relying on this technology, operators can save two minutes per cycle when compared with manual methods.

In order to reduce the time needed to clean fittings with thermostats that do not have an electronic interface – such as the Grohtherm Special, which is often used in healthcare facilities – GROHE has developed a practical cap accessory that starts the thermal disinfection process with a simple twist of the hand. No subsequent re-adjustment of the thermostats is required.





# AVOIDING STAGNATION WITH AUTOMATIC FLUSHING/ BIDIRECTIONAL COMMUNICATION PROBLEM-SOLVING EXPERTISE

## **AUTOMATIC FLUSHING PREVENTS STAGNATION**

Stagnating water in the pipes can greatly reduce the quality of drinking water. On the one hand, components of the pipe material may be released into the water – and on the other, the risk of contamination from germs increases. The consequences range from a change of taste, odour or appearance to serious health risks.

GROHE offers the healthcare sector multiple solutions to help avoid stagnation in water pipes. These include electronic faucets, flush plates for WCs and urinals, and self-closing faucets that enable the scheduling of regular rinsing.

## **ELECTRONICS FACILITATE PROGRAMMING AND DOCUMENTATION**

GROHE's electronically controlled sanitary fittings offer clear advantages for hospitals and retirement homes. They can be easily programmed and controlled via remote control or smartphone app. Among other things, automatic flushes can be scheduled to be carried out automatically after 24 hours – depending on or regardless of the last time the faucets were used. GROHE's unique integrated quartz timekeeping technology ensures that the flushes start exactly on time. In addition to this, bidirectional communication enables the retrieval of all important data concerning flushing, thermal disinfection and usage, significantly facilitating documentation and analysis for healthcare facility operators.

## **EASY-TO-CLEAN SURFACES**

With a perfect combination of materials and design, GROHE products give dirt little opportunity to accumulate. Special fittings for the healthcare sector are designed to prevent dirty edges on escutcheons and seals and ensure that any splashed water can drain unimpeded. Some of the ceramic collections also have surface technologies like PureGuard and AquaCeramic, which prevent germs and dirt from adhering to the material. On top of that, GROHE's rimless toilets further reduce the effort required to clean the bathrooms.





# SAFETY

## PROBLEM-SOLVING EXPERTISE

### SAFETY

To prevent the contamination of drinking water, healthcare facilities often set the supply temperature at over 65 °C. High temperatures like this require effective protection against scalding and burns. The relevant planning specifications are regulated in a European standard for drinking water installations.

### THERMOSTAT TECHNOLOGY FOR MAXIMUM PROTECTION

The DIN EN 806-2 standard stipulates that users must be protected against scalding by hot water. All GROHE thermostats are equipped with TurboStat technology, which mixes cold and warm water to achieve and maintain the desired temperature. That means there's no need to keep fiddling with the taps. The thermostats also have a special function to restrict the maximum temperature.

GROHE thermostats automatically compensate for temperature and pressure fluctuations. In addition to this, their smart technology can tell if there's no cold water – for example due to a burst pipe – and immediately shuts off the water supply. This reliably prevents unmixed hot water from coming out of the faucet.

### NO BURNS FROM HOT CHROME

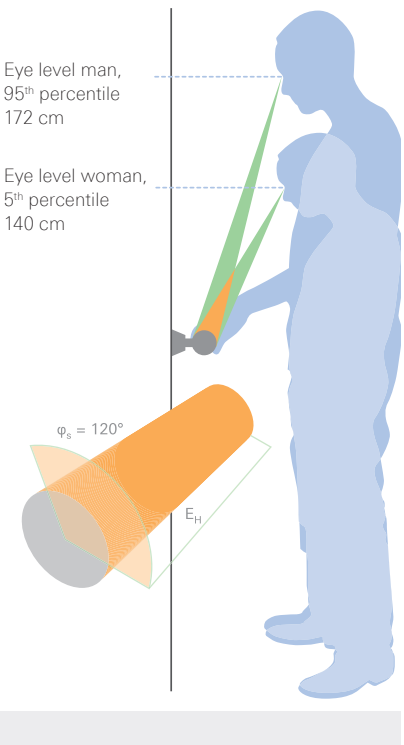
GROHE thermostats are equipped with CoolTouch technology to prevent the chrome surfaces from overheating. A sophisticated water channel keeps the entire body of the faucet cool. That means it can be touched without risk of burning the user at any time.



### INTUITIVE EASE OF USE FOR INCREASED SAFETY

When selecting fittings for hospitals and care homes, designers should choose products that are easy for people with limited sensory processing and restricted motor skills to use. And the ergonomics are just as important as intuitive and user-friendly controls. GROHE shower thermostats are equipped with EasyLogic to ensure that the temperature scales are always easy to read. The scale is applied to special non-reflecting surfaces and remains in the user's sightline even when turning the dials.

### GROHE EasyLogic temperature scale is always visible



### PRE-WARMED WATER WITH THE GROHTHERM MICRO

The Grohtherm Micro is the perfect addition to all faucets in public facilities, regardless of whether they are equipped with traditional self-closing faucets like the Eurodisc SE, which is operated by pushing a button, or electronic models like the Eurosmart Cosmopolitan E. In addition to this, the Grohtherm Micro can be used with both double-handled faucets and single-lever mixers.

The small thermostat is installed underneath the wash basin, where it mixes the water to a pre-selected temperature and keeps it there – even if the pressure fluctuates. If the supply of cold water is interrupted, the thermostat automatically turns off the water, thus protecting users from scalding. On top of that, the Grohtherm Micro enables easy and reliable thermal disinfection to prevent legionnaire's disease.

GROHE Grohtherm Micro:  
Innovative technology for more safety in small spaces





# ECONOMY

## PROBLEM-SOLVING EXPERTISE

### ECONOMY

Resource-saving solutions help healthcare facilities operate more cost-effectively. This is an aspect that planners and architects should consider early on when carrying out renovations or constructing new buildings. GROHE offers a wide selection of sanitary fittings with integrated water-saving technology for operating theatres, consulting rooms and patient rooms, as well as for publicly accessible facilities. These products help prevent water and energy from being wasted right from the start and increase the economic efficiency and competitiveness of the establishments.

### KEEPING AN EYE ON WATER CONSUMPTION AT THE WASH BASINS

Faucet left open by accident? Solutions that automatically turn off the water will prevent that from happening. These include self-closing faucets like the Eurodisc SE. They are activated by pressing a button and stop the water flow automatically after a preset period of time. This period can be set to anywhere between 2 and 180 seconds.

Faucets with infrared controls like the Euroeco CE or Bau CE are also very economical. Water only flows when the sensor detects a user's hands, and the water flow automatically stops when they are removed. The result is a significant reduction in water consumption – as well as reduced energy consumption for faucets with pre-mixed water.



| Saving water when flushing                               |                                                     |                                        |                                      |  |
|----------------------------------------------------------|-----------------------------------------------------|----------------------------------------|--------------------------------------|--|
| CONSUMPTION / SAVINGS                                    | CONVENTIONAL<br>9 L WC FLUSH<br>WITHOUT SHORT FLUSH | 9 L WC FLUSH<br>WITH 4.5 L SHORT FLUSH | 6 L WC FLUSH<br>WITH 3 L SHORT FLUSH |  |
| Consumption / day                                        | 216 l                                               | 144 l                                  | 96 l                                 |  |
| Consumption / year                                       | 78,800 l                                            | 52,500 l                               | 35,000 l                             |  |
| Savings per year<br>compared to a<br>conventional system |                                                     | 26,300 l<br>= 131.50 €                 | 43,800 l<br>= 219.00 €               |  |

| Water savings during handwashing                                                          |                           |                     |                         |                     |
|-------------------------------------------------------------------------------------------|---------------------------|---------------------|-------------------------|---------------------|
| Wetting hands<br>5 sec                                                                    | Applying soap<br>+ 10 sec | Rinsing<br>+ 10 sec | Consumption<br>per year | Savings<br>per year |
| <div><div></div><div></div><div></div></div> <div>Flow time 25 sec = 5.00 l / usage</div> |                           |                     | 188 m³                  |                     |
| <div><div></div><div></div><div></div></div> <div>Flow time 21 sec = 2.00 l / usage</div> |                           |                     | 76 m³                   | 60 %                |
| <div><div></div><div></div><div></div></div> <div>Flow time 18 sec = 1.73 l / usage</div> |                           |                     | 65 m³                   | 65 %                |
| <div><div></div><div></div><div></div></div> <div>Flow time 15 sec = 1.43 l / usage</div> |                           |                     | 54 m³                   | 70 %                |

Conventional single-lever mixer

Flow rate of 12 l/min.

Eurosmart Cosmopolitan T self-closing faucet

Flow rate of 5.7 l/min.

Flow time 7 sec

Eurodisc SE self-closing faucet

Flow rate of 5.7 l/min.

Flow time 7 sec

Eurosmart Cosmopolitan E touchless faucet

Flow rate of 5.7 l/min.

Basis for calculations: 150 activations per day, 250 days of use per year

### MODERN TOILET FLUSH TECHNOLOGY HELPS SAVE WATER

Not every toilet flush requires the full water volume available. GROHE flush plates with start & stop and dual flush systems allow patients and visitors in medical facilities to select the flush volume they need. Skate Air even offers both systems in one. When a user presses the smaller EcoButton, only half the available flush volume is released into the WC. This button can also be used to stop the flush once enough water has been released.



Large button for full flush



Small button for short flush  
or to stop the flush after  
pressing the large button



# GROHE ECOJOY

## PROBLEM-SOLVING EXPERTISE






### SAVING WATER AND ENERGY WITH INNOVATIVE TECHNOLOGIES

Being conscious of resource consumption is not only good for your budget, but also for the environment. That's why GROHE is always developing new solutions that combine attractive design, user-friendliness and great functionality with responsible energy and water consumption. One example is EcoJoy. A wide range of our faucets, shower heads, thermostats and flush systems are equipped with this integrated water-saving technology.

Depending on the product, it reduces water consumption by 40 to 70 percent – without compromising on convenience or design. And as less water needs to be heated, energy consumption is also reduced. The result? A smaller environmental impact and lower operational costs.



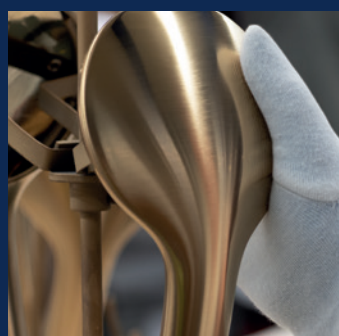
All GROHE EcoJoy products make it easier to save water and energy while still allowing you to enjoy a perfect water experience

|                                                                                     |      |                                                                                                                                                                                                                                                                                                              |
|-------------------------------------------------------------------------------------|------|--------------------------------------------------------------------------------------------------------------------------------------------------------------------------------------------------------------------------------------------------------------------------------------------------------------|
|  | 50 % | GROHE single-lever mixers: Integrated water-saving technology in a wide range of models across all designs and price classes automatically reduces the water consumption by up to 50 % compared to average consumption – every single time you turn on the tap. And the water flows as consistently as ever. |
|  | 40 % | GROHE shower heads: The integrated water-saving technology in selected models means that your perfect shower consumes up to 40 % less water. But you'll still enjoy the all of the performance and benefits you expect from GROHE shower heads.                                                              |
|  | 48 % | GROHE thermostats: GROHE thermostats heat water to the desired temperature within seconds and maintain exactly the right temperature until you're finished. There's no need to waste time and water fiddling with controls for the right temperature!                                                        |
|  | 50 % | GROHE sanitary systems: GROHE's environmentally friendly flush plates and flush systems save water. Start & stop and dual flush systems allow you to select the most economical flush option.                                                                                                                |
|  | 70 % | GROHE special faucets: Electronic controls ensure that water only flows when it is being used. Depending on the model, the water flow is automatically stopped as soon as your hands are moved away from the faucet – for example when applying soap – or after a preset period of time.                     |





Follow us:



## QUALITY

***"No.1** most trusted brand  
in the sanitary industry" –*  
*Wirtschaftswoche, 2017*



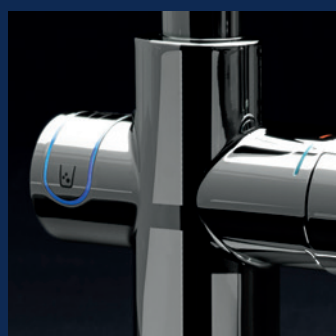
## TECHNOLOGY

***"Top 50** companies  
to change the world" –*  
*Fortune Magazine, 2017*



## DESIGN

*Over **400 design awards**  
won since 2003*



## SUSTAINABILITY

***CSR Award winner**  
of the German  
Government, 2017*

Grohe AG  
Feldmühleplatz 15  
D - 40545 Düsseldorf  
Germany

© 07/2020 – Copyright by GROHE

PART OF **LIXIL**