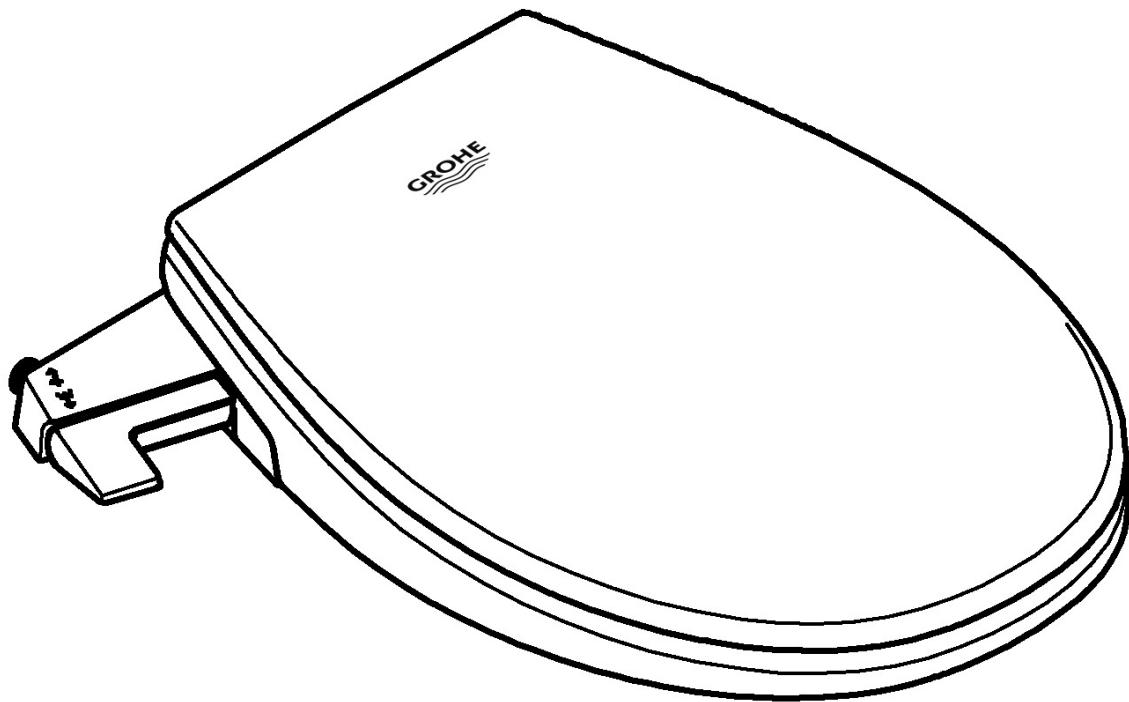


Pure Freude  
an Wasser

**GROHE**  
WAVE

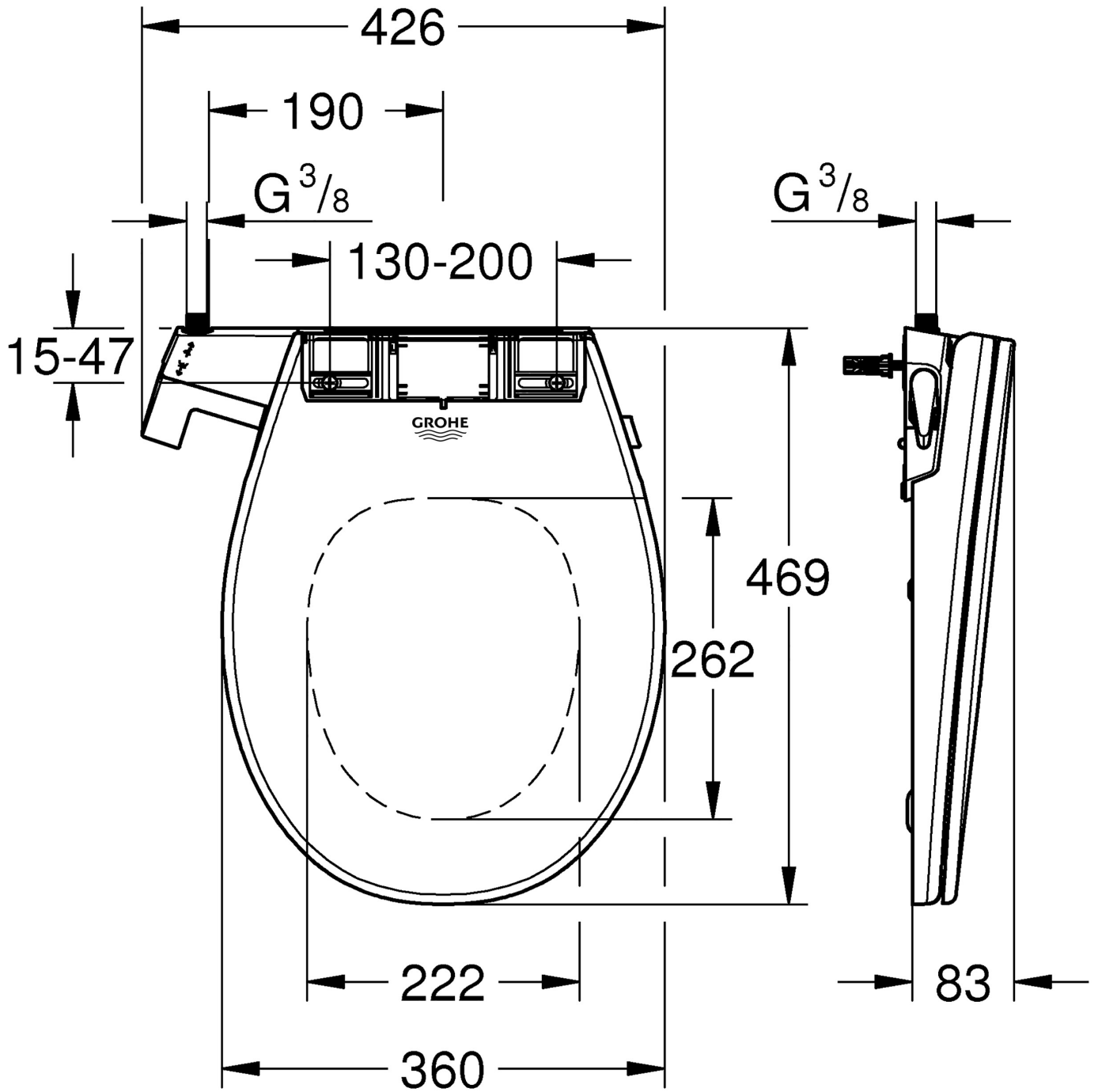
GROHE  
**PRIRUČNIK ZA WC DASKU S  
FUNKCIJOM BIDETA**

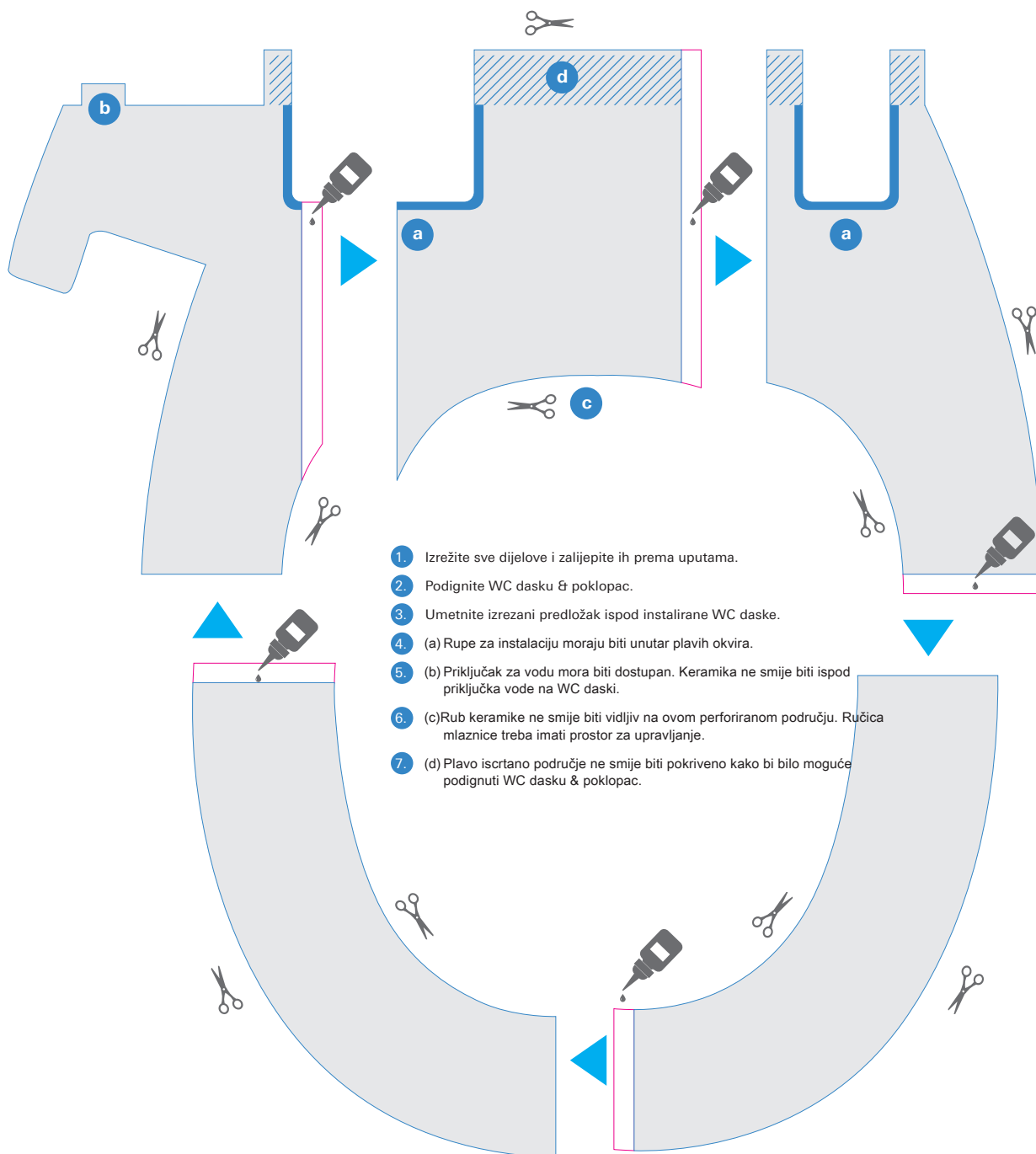


Pure Freude  
an Wasser

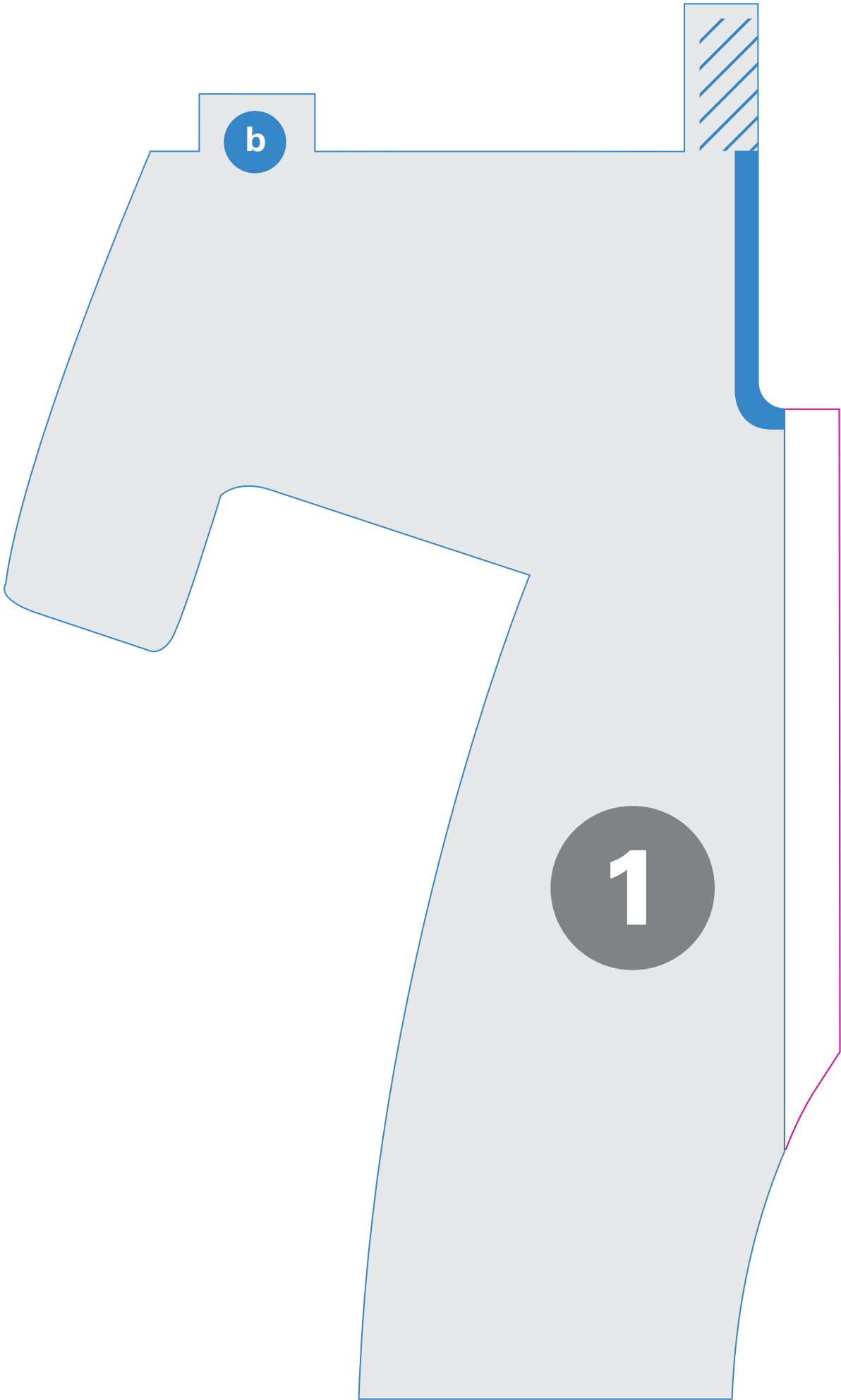


GROHE 39 648 SH0

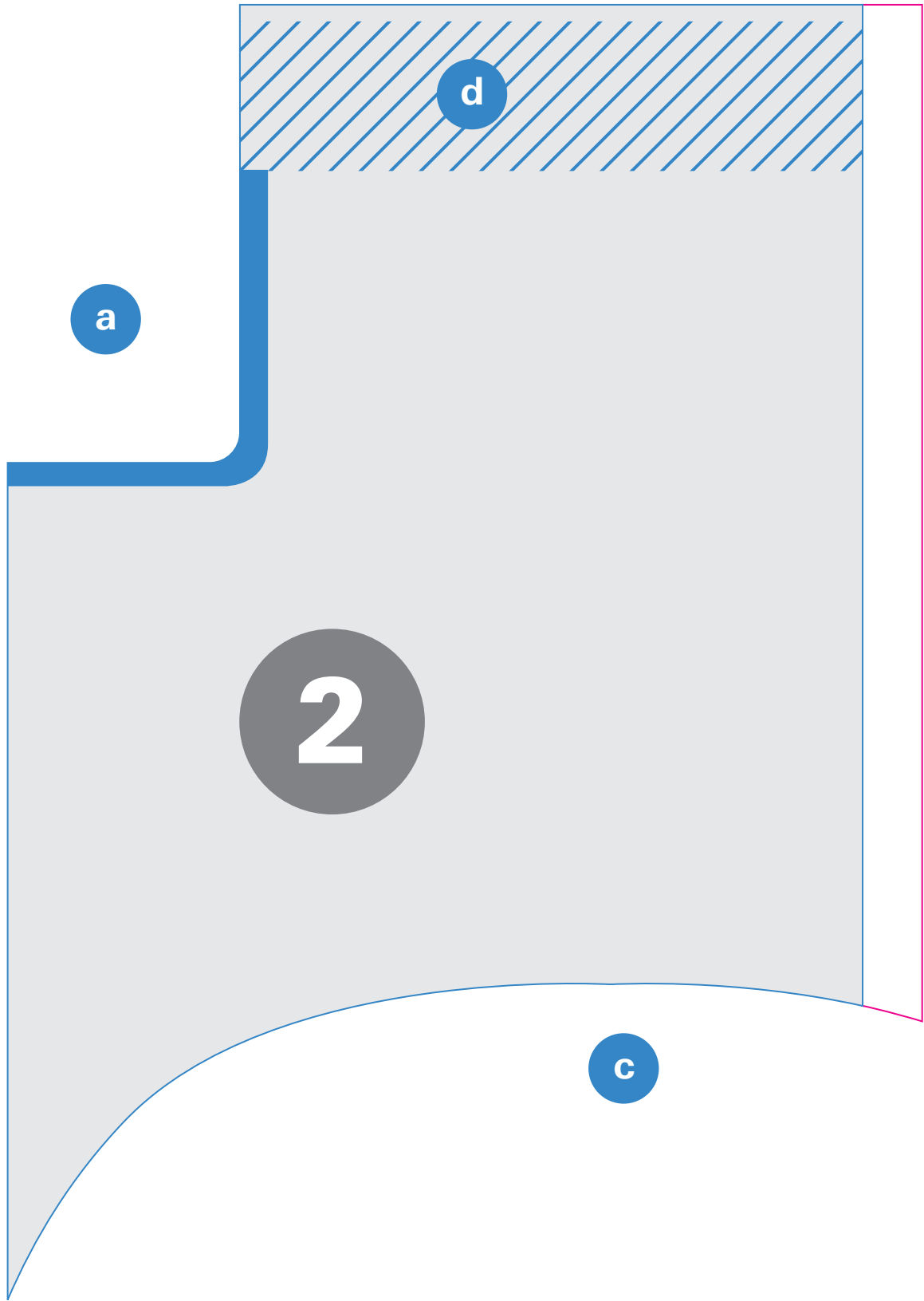




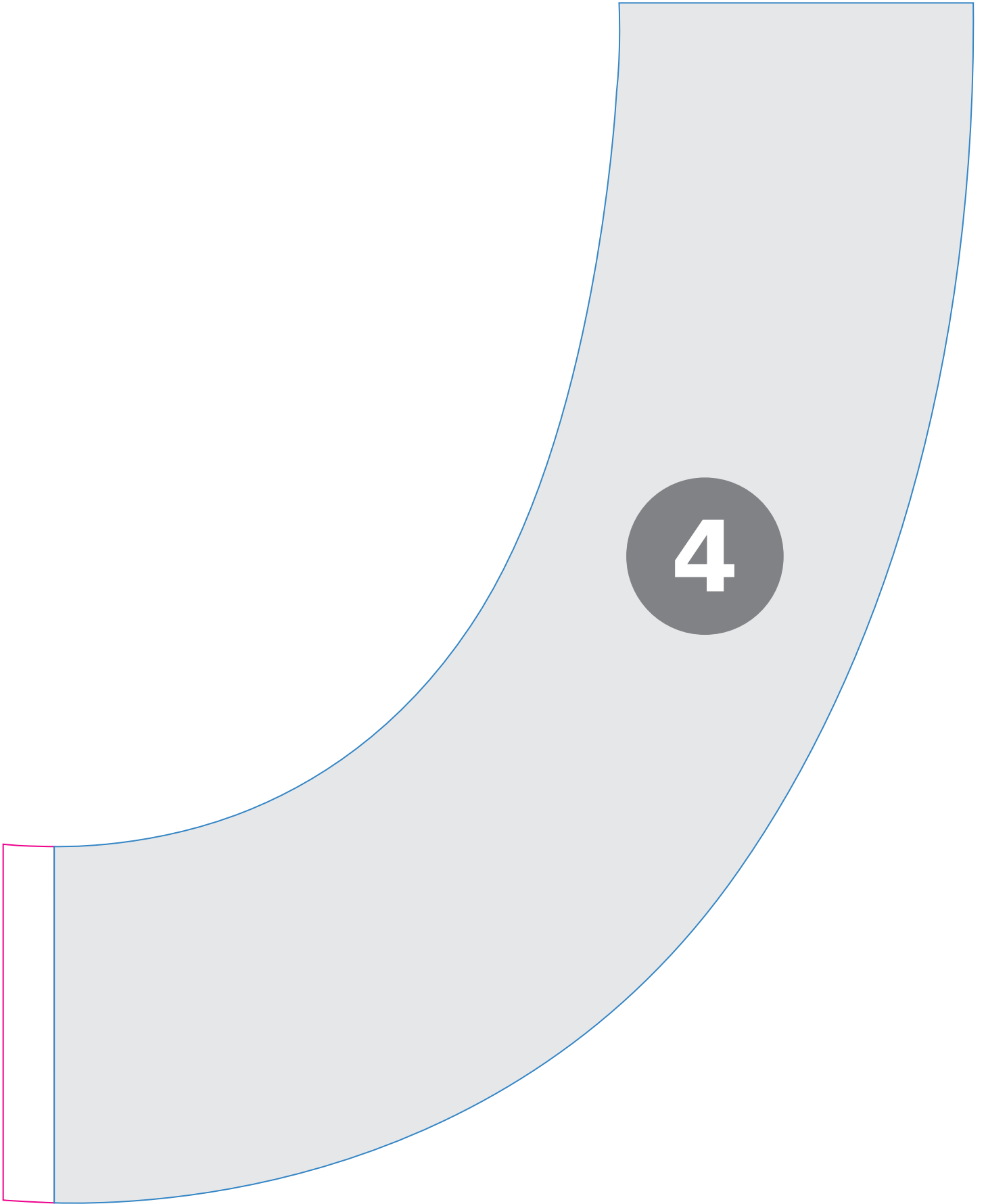
1. Izrežite sve dijelove i zalijepite ih prema uputama.
2. Podignite WC dasku & poklopac.
3. Umetnite izrezani predložak ispod instalirane WC daske.
4. (a) Rupe za instalaciju moraju biti unutar plavih okvira.
5. (b) Priključak za vodu mora biti dostupan. Keramika ne smije biti ispod priključka vode na WC daski.
6. (c) Rub keramike ne smije biti vidljiv na ovom perforiranom području. Ručica mlaznice treba imati prostor za upravljanje.
7. (d) Plavo iscrtano područje ne smije biti pokriveno kako bi bilo moguće podignuti WC dasku & poklopac.

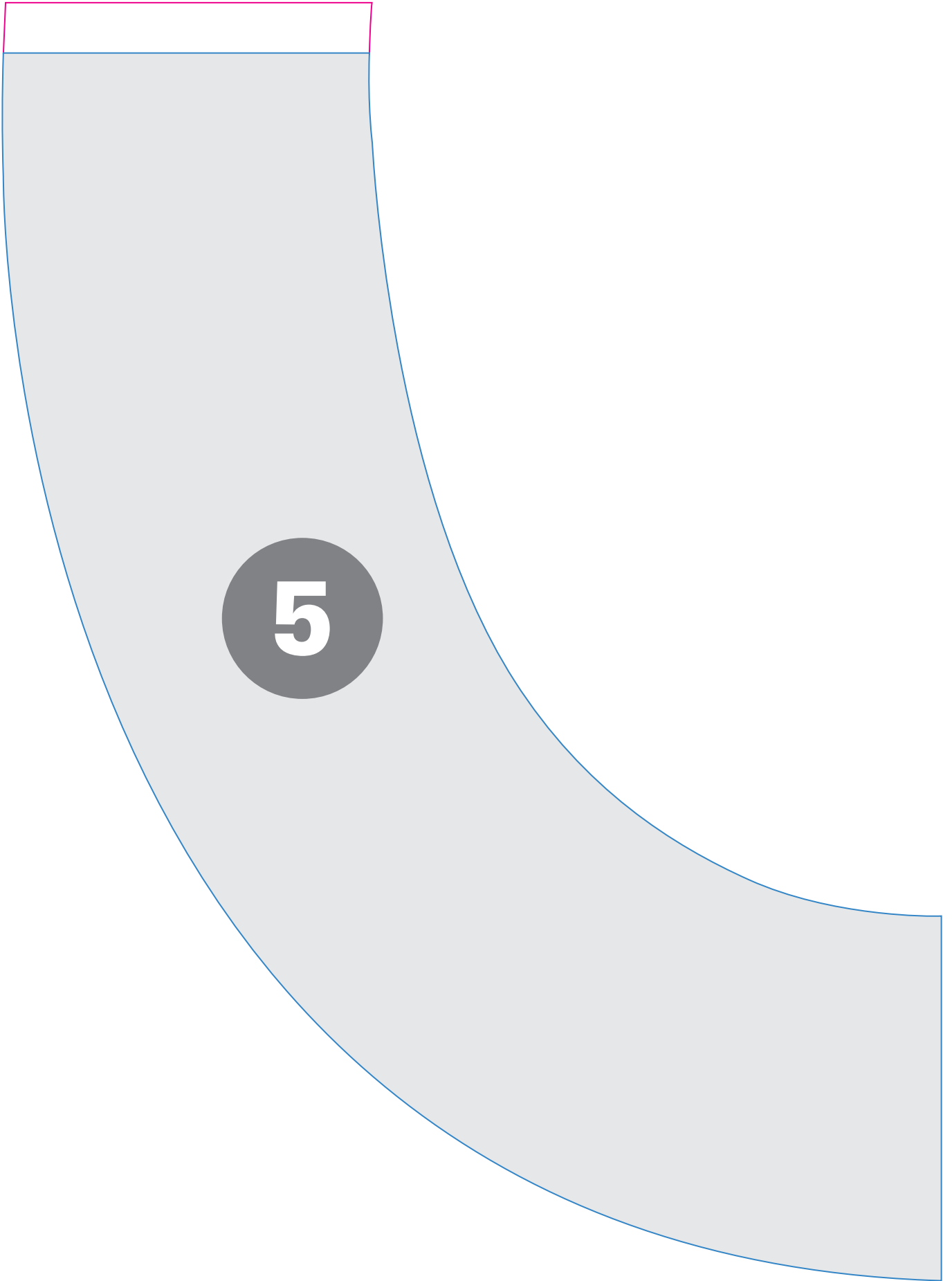












GROHE AG  
Feldmühleplatz 15  
D - 40545 Düsseldorf  
Germany

© 03/2020 – Copyright by GROHE