

GROHE PROFESSIONAL

WORK
SMARTER

GROHE
PROFESSIONAL

NEW

GROHE TOUCH-FREE FITTINGS AND FLUSHING SYSTEMS

THE LATEST GENERATION

GROHE | MASTERS OF TECHNOLOGY

Cover image: Hazza Bin Zayed Stadium, United Arab Emirates

MASTERS OF TECHNOLOGY



THEOCHARIS LIOLIS

Master of Technology, produces unbeatable hardwearing basin mixer surfaces with GROHE StarLight®.

GROHE's people have been regarded by their peers in the industry as Masters of Technology, because of their innovations, outstanding design and award-winning fittings.

By a combination of their advanced craftsmanship and their cutting-edge approach to effective teamwork and processes, our Masters of Technology take the lead in developing, designing and manufacturing our outstanding product range, all the while testing and fine-tuning each piece to ensure continued customer satisfaction.

The result: Timeless design. And quality that lasts a life-time. Again and again GROHE products surprise users with unique features that provide 'Pure Freude an Wasser'. When you use a GROHE product you can feel the difference. Time after time.

Take, for example, the latest generation of GROHE electronics with bi-directional data exchange. Equipped with the latest infrared technology the products not only receive infrared commands for programming and settings, but can also send monitoring and usage information.

Another feature is the lasting quality of the surfaces. Thanks to the GROHE StarLight® coating the basin mixer is incredibly scratch resistant, meaning the dazzling surface won't mark or tarnish. Offering high user comfort and minimal cleaning GROHE is setting a new standard for commercial or public sanitary facilities.

GROHE CONTENTS

THE LATEST INFRARED GENERATION WITH BI-DIRECTIONAL DATA EXCHANGE	04
THE NEW REMOTE CONTROL	12
GROHE INFRARED TECHNOLOGY WITH BLUETOOTH COMMUNICATION	16
OVERVIEW OF THE RANGE	20
GROHE Infrared Basin Mixers	20
GROHE Infrared products for Urinals	23
GROHE Infrared product for WCs	24
GROHE Basin Mixers with Bluetooth communication	25
GROHE Shower and flushing systems with Bluetooth communication	26
GROHE Accessories	27

GROHE TECHNOLOGY



GROHE StarLight®
Made-to-last surfaces ranging from satin matt to brilliant gloss.



GROHE CoolTouch®
No scalding on hot surfaces thanks to 100% GROHE CoolTouch®.



TouchFree
Innovative infrared technology for hygienic, touch-free actuation of basin mixers, WCs and urinals.



GROHE EcoJoy
Save valuable resources and get 100% water enjoyment.



GROHE QuickFix®
Faster, easier, safer – GROHE QuickFix® reduces installation time by up to 50%.

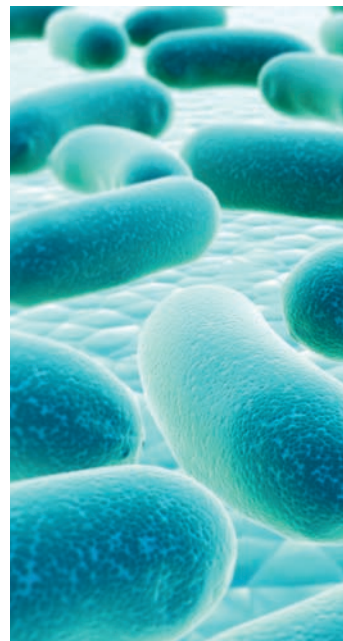


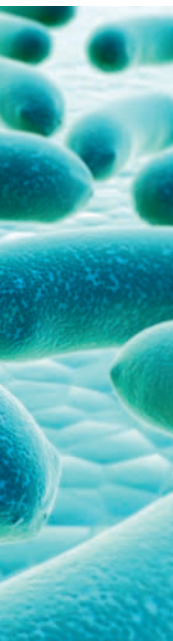
LongLife Battery
Unique low-energy electronics ensure a long service life.

THE LATEST INFRARED GENERATION WITH BI-DIRECTIONAL DATA EXCHANGE

Infrared technology with touch-free activation has proven its worth in sanitary facilities in so many ways. It's a hands-down winner for obvious reasons: Eliminating the need for physical contact with fittings, it prevents germs from spreading. Thanks to their high standards of hygiene plus the added convenience, these infrared fittings make using sanitary facilities a lot more pleasant.

New benchmark: Intelligent infrared fittings. As one of the leading manufacturers of electronic basin mixers and flush systems, we build decades' worth of experience into all our technologies and continually refine them to meet our customers' needs. GROHE electronic products are fitted with the very latest technology to enable bi-directional data exchange. That means the infrared products – which feature a single infrared window and can be recognised by the infrared control's "eye" that lights up yellow, not red as with earlier models – can not only receive commands for programming and settings but also transmit consumption data and settings. This monitoring enables our market-leading infrared solution to deliver highly transparent consumption data for each individual draw-off point. Information relating to frequency, duration and time of activation is now clearer than ever before. It allows operating costs for water and electricity to be more accurately determined and reduced over the long term.







The hands-down winner for great hygiene. GROHE infrared technology is traditionally used mainly for basins and urinals. It's here and with WCs that the hygienic benefits of touch-free actuation become particularly evident. The more highly frequented the sanitary facilities, the more users stand to gain from automatic waterflow activation. It's ideal for hotels and restaurants, companies in the healthcare and food industries, at stations and airports, at recreational and sports facilities as well as in many other types of public and commercial spaces.

Flexible power supply for use. Since GROHE electronics can be operated with your choice of 230 V mains connection, a 6 V lithium battery or the GROHE power box, there's no limit to where they can be used. This also means that retrofitting draw-off points with infrared technology – during renovations, for example – does not require a socket.



MAXIMUM HYGIENE, SIMPLE SETTING AND EXCELLENT EFFICIENCY

A key innovation in GROHE infrared products is the improved control of all functions: In addition to simple setting by hand via sensors as we know it, our one eye infrared models now also offer the option of changing settings using the remote control or an app on a smartphone or tablet. That makes it easier to set or adjust functions such as running time and regular, automatic flushes. Even changing or activating functions such as thermal disinfection or automatic flushing (stagnation flush) is now comprehensive, simple and intuitive.

Setting options by hand via sensors

7 preset standard programs for the key functions

Automatic flushing frequency
(off, 24 or 72 hours, to prevent water stagnation)

Automatic flushing duration (60, 300 or 600 sec.)

Thermal disinfection (3.5 or 11 min. or continuous operation);
Sensor monitored: Automatic stop when a hand approaches (reflection)

Cleaning stop function (off or 180 sec., easy for cleaning staff to operate)

Setting flush volume for the WC and urinal (WC 4-9 l, urinal 1-7 l)

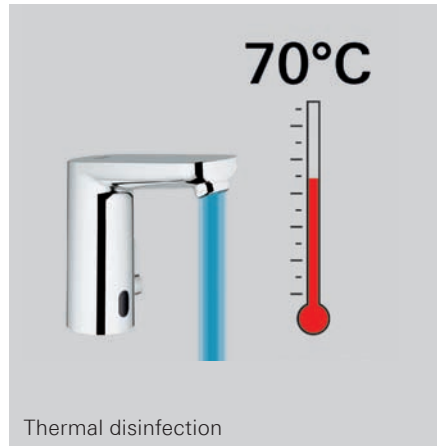
Battery charge indicator: Blinking LED = low battery charge;
displays 4 charge levels: >60%, >40%, >20%, <20%

Meeting the most exacting hygiene standards. The preset programs in our infrared products are designed to deliver just the right amount of water and make it easier to meet any building's specific hygiene standards. By flushing regularly (according to users' settings) it prevents germs from growing in pipes (biofilm). Not only that, they also prevent unpleasant odours that can be caused by stagnation water, especially in WCs and urinals.

Additional setting options via remote control or app. The remote control or app lets you fine-tune all functions even more accurately and read out consumption data reliably and simple. Another benefit of the new GROHE technology is being able to set not only individual draw-off points but also entire rows to the desired parameters with predefined profiles at the touch of a button.

Infrared = sustainability. GROHE electronics significantly reduce water consumption by starting and stopping the flow of water precisely as needed. They can slash water use by up to 70% compared with conventional single-lever mixers. And GROHE electronics are also sustainable in terms of their maintenance requirements and long life. Our batteries use very little energy, so they last a long time: up to seven years at 150 actuations per day. Alternatively, all our infrared mixers can run on a mains connection (230 V) or via the GROHE power box.

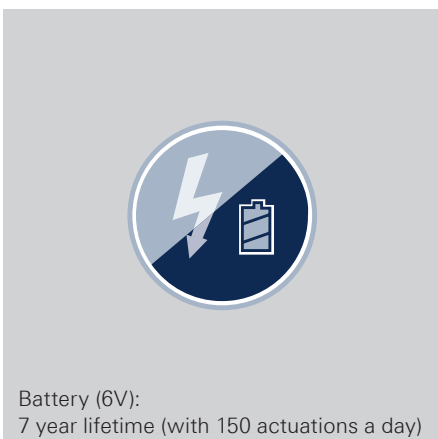
MAXIMUM HYGIENE



SIMPLE TO SET



EXCELLENT EFFICIENCY



DATA READOUT FUNCTION LETS YOU KEEP TRACK ON EVERYTHING

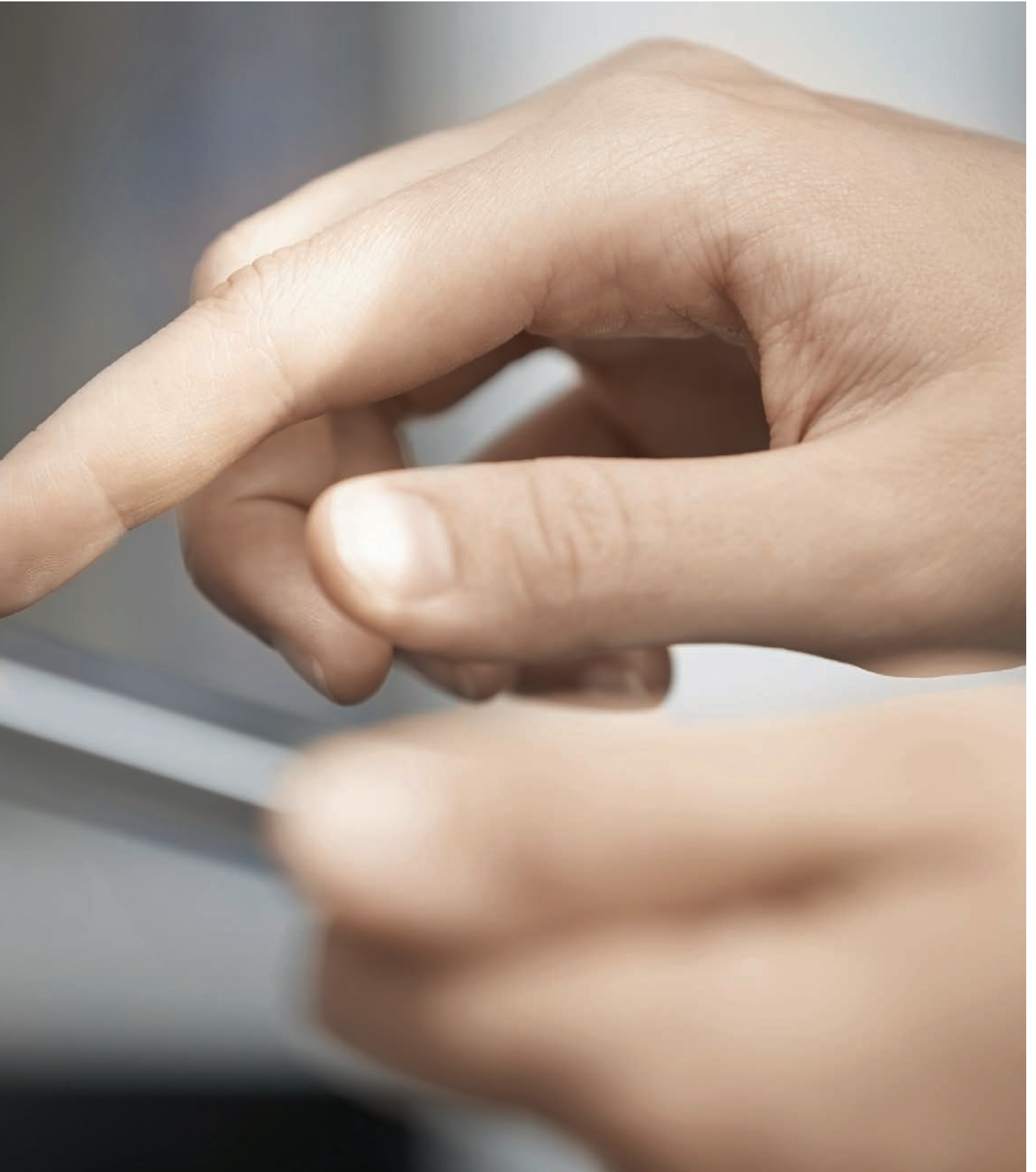
How often and for how long are basin mixers or flushers activated within a certain period of time? That's the key question in determining the correct settings for sanitary products when it comes to such essentials as meeting hygiene standards, avoiding stagnant water in supply pipes as well as optimising water and electricity consumption, not to mention preventing drains from drying out and eliminating unpleasant odours.

Greater transparency. The data readout functions deliver full transparency whenever the latest-generation GROHE infrared controls with bidirectional data exchange are activated – including pre- and automatic flushing. This information leaves no doubt about when the solenoid valve in a basin mixer was last opened and closed, for example, and how much water was consumed at that location.

Planning maintenance precisely as needed. Maintenance staff can quickly tell whether the basic settings match actual use or whether functions such as automatic flush intervals need to be adjusted. In addition, the total running time as well as how often the solenoid valve is opened and closed indicate the degree of use and the resulting maintenance requirements.

Additional setting options. Many functions can be set simple and even more precise via remote control or app, such as flexible running times and flush duration for the automatic flush. Just as you would expect, controlling all the settings is simple, straightforward and intuitive.





THE NEW REMOTE CONTROL: **SMART, STRAIGHTFORWARD, INTUITIVE**

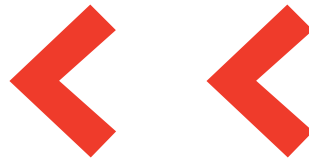
Many additional settings can be operated with the new GROHE remote control. It is intuitive and straightforward to operate and gives plumbers, caretakers or facility managers access to the products. The integrated screen clearly displays all the setting options featured in each infrared product. It enables the settings for use and total running times to be adjusted to changing needs in an instant. The menus feature a logical structure that simplifies operation – so even thermal disinfection can easily be activated just by pressing a button.

Save time and money. Another special feature of the new GROHE Professional remote control is the ability to access a wide range of data on the infrared products and display them on screen. This is especially important for those in charge of sanitary facility maintenance, as it gives them all the product and consumption information they need to ensure optimum long-term operation. The consumption profile can be stored in the remote control and transferred to other infrared products. Particularly in facilities fitted with numerous infrared-controlled sanitary products, this option is the ideal way to save time and optimise costs. Data readout rapidly indicates any irregularities, which simplifies maintenance. Operating costs can be calculated and reduced at each draw-off point.

Configuration: Simply navigate to the desired function.

The new GROHE infrared products' functions are as diverse as their operation is simple. Any user can readily deploy the full range of program options that allow the electronic basin mixers and flush systems to meet specific needs while operating with maximum efficiency. This includes, for example, adjusting detection zones: Whether hand or body detection (thermostat function) which is required by surgeons in operating rooms the detection option can be (individually) defined.

Complex processes made easy. Setting automatic flushes in order to prevent water stagnation and the odours it causes is now much simpler: Activation can be set flexibly at four-hour intervals, and the duration of each flush can also be set in 30-second intervals as desired.



THE NEW REMOTE CONTROL AT A GLANCE

Settings via remote control (configuration)

Setting the detection zone in 1 – 19 steps (7–20 cm)

Automatic flush

Time: According to time or use in four-hour increments
(4–80 hours)

Flush duration: Flexible, in 30-second increments (30–600 sec.)

Thermal disinfection in one-minute increments (4–23 min.)

Activating thermal disinfection with one press of a button

Cleaning stop function with three different time settings (180, 320, 560 sec.)

Total running time of waterflow per activation (6–420 sec.)

Run-on time after leaving detection zone is individually adjustable
in one-second increments (0–19 sec.)

Service via remote control

Read out, save and load of product profile (depending on product category)

Battery charge indicator

Restore factory or user settings

Read out infrared product's software version, serial number
and manufacturing date

Number of power interruptions

Switch product off / on

Consumption data via remote control (monitoring)

Monitoring consumption and flow data

Number of thermal disinfections


Total running time

Number of times solenoid valve is opened and closed

Number of automatic flushes

Reset solenoid valve counter for maintenance




Basin Mixer 

CONFIGURATION

SERVICE


MONITORING

Configuration 

Detection zone

Running time after last detection

Maximum running time


Configuration 

Automatic Flushing

ACTIVATE DEACTIVATE

Runtime

Interval

Configuration 

Flush mode

USAGE DEPENDENT

USAGE INDEPENDENT

Short time off

ACTIVATE DEACTIVATE


Runtime

Basin Mixer 

CONFIGURATION

SERVICE

MONITORING

Service 

Model name

Software version

Serie number

Date of production

Voltage Supply

Service 

Power cut


Lock tap

START STOP

Test mode

START STOP

+ -

Service 


Profile

SAVE LOAD

Reset

FACTORY RESET


USER RESET

Basin Mixer 

CONFIGURATION

SERVICE

MONITORING

Monitoring 

Automatic flushing


Counter total

Last flush

Operations

Counter Total

since user reset

Monitoring 

Water consumption

Counter total

Thermal Disinfection

Counter total

since user reset

GROHE INFRARED TECHNOLOGY WITH BLUETOOTH COMMUNICATION**: MOBILE CONTROL AND MONITORING

Selected GROHE products (230V) with Bluetooth communication boast a special feature: They can communicate over Bluetooth with smartphones and tablets over a free to downloadable app (via Apple or Android Store), which makes it easier than ever to read out consumption data and set a variety of functions. In sanitary facilities with several basin mixers or WC/urinal flushers, the data from all infrared products within range are captured at once and can be read out one after the other. What's more, the draw-off points can be assigned names via an app, making maintenance more systematic.



Improved maintenance functions via monitoring options

- Finds all products in range and read them out one after the other *
- Password-protected access *
- Simple product selection via the app *
- Individual name assignment for each product *
- Analysis of average consumption data over the past 30 days *
- Number of automatic flushes, time of last automatic flush *
- Consumption per day, consumption during the past 30 days *
- Activations of thermal disinfection, last thermal disinfection *
- Total running time of each fitting, activations of solenoid valve *

Convenient, user-friendly setting options

- Range setting in 1 – 19 steps (7–20 cm)
- Automatic flush
 - Time or user dependant 4 hour increments (4–80 hours)
 - Flush duration: Flexible, in 30-second increments (30–600 sec.)
 - Exact time control *
- Thermal disinfection in one-minute increments (4–23 min.)
- Activating time-controlled thermal disinfection with one press of a button *
- Cleaning stop function with three different time settings (180, 320, 560 sec.)
- Total running time of waterflow per activation (6–420 sec.)
- Run-on time after leaving detection zone is individually adjustable in one-second increments (0–19 sec.)

Improved information about service and maintenance tasks

- Read out, save and load of product profile: three profiles per product category *
- Restore factory or user settings
- Hardware and software version

* additional features available with the app

** The Bluetooth® word mark and logos are registered trademarks of the Bluetooth SIG, Inc. and are used by Grohe AG under licence. Other trademarks and brand names are the property of their owners.

Monitoring

Washbasin Floor 2		Open and closing cycles		Open and closing cycles (30 days)	
Monitoring		Counter total	4120	Min	0 - 06.03.2016
Automatic flushing		Since Usage Reset	4120	Max	192 - 09.02.2016
Counter total	1	Last Usage Reset	---		
Next flush in	22:05	Average (in total)	96		
Last flush		Average (30 days)	95		
Date	07.03.2016	Last operation			
Time	10:53	Date	07.03.2016		
Runtime	60 sec				
Water consumption		Thermal disinfection			
Runtime (total)	133 min	Counter total	1		
Quantity (total)	758 l	Since Usage Reset	1		
Flow straightener	5,7 l/min	Last Usage Reset	---		
Operating hours total	1017 h	Last thermal disinfection			
Thermal disinfection		Date	07.03.2016		
Counter total	1	Time	13:28		
Since Usage Reset	1	Runtime	4 min		

Configuration

Configuration		Next flush in 22:05		Start flushing --:--		Thermal disinfection runtime 4 min	
Range detection zone	6	Runtime	60 sec	Cleaning mode	<input checked="" type="checkbox"/>	<input type="range"/> <input type="button" value="START"/>	
Running time after last detection	1 sec	Interval	24 h	Runtime	180 sec		
Maximum running time	60 sec	Automatic flushing mode		Lock preset program mode	<input type="checkbox"/>	Service <input type="button" value="SEND"/>	
Automatic flushing	<input checked="" type="checkbox"/>	<input type="button" value="USAGE-DEPENDENT"/>	<input type="button" value="USAGE-INDEPENDENT"/>	Thermal disinfection runtime	4 min		

Service

Service		Power cut 9		Time-controlled <input type="checkbox"/>	
Model name	BASIN MIXER	Switch product off		Test mode	<input type="button" value="START"/>
Software version	129	Direct	<input type="button" value="START"/>	FACTORY RESET	
Serial number	M018149150016	Time-controlled	<input type="checkbox"/>	USAGE RESET	
Date of production	49 15	Test mode	<input type="button" value="START"/>	<input type="button" value="SEND"/>	
		FACTORY RESET			

System requirements

Apple* iPhone 5/6, iPad 2/3/4/ Air/Air 2/ iPad mini 2/3
 Apple operating system:
 iOS 8.0 and higher (32/64 bit)
 Android
 4-inch display, OS 4.3.x-5.x

Mobile end devices and the GROHE Infrared Remote App** are not included in delivery and must be acquired through an authorised Apple reseller/retailer/ iTunes or the Google Play Store.

* Apple, the Apple logo, iPod, iPod Touch, iPhone and iTunes are trademarks of Apple Inc. and are registered in the USA and other countries. Apple assumes no responsibility for the functioning of this device or its compliance with safety standards and regulatory norms.
 ** Available free of charge from the iTunes Store or Google Play Store.

GROHE INFRARED TECHNOLOGY – YOUR BENEFITS

Benefits for operators of sanitary facilities in public and commercial spaces

Reliable and durable technology with a variety of options to meet users' needs

Full transparency whenever basin mixers and flush systems are activated, meaning more opportunities to track and control use patterns

Easier maintenance

Enhanced safety and hygiene thanks to simplified settings for automatic flushing, thermal disinfections and cleaning stop function

More efficient and cost-effective

More sustainable thanks to lower water and electricity consumption

Benefits for plumbers

Better access to settings and controls of basin mixers and flush systems

Intuitive activation and control of running times, flow rates, detection zones and other features

Easier setting of functions such as automatic flush, cleaning mode and thermal disinfection

Faster and/or simultaneous setting of entire rows of sanitary products

Enhanced service quality and easier maintenance planning

Five-year warranty

Since GROHE products are designed to have an exceptionally long service life and are subjected to intensive, extended-use testing, we are able to offer comprehensive warranties.*



* We provide an extended manufacturer's warranty of five years on all our products manufactured under the GROHE brand after 1 April 2012. For the detailed terms and conditions of our warranties, please go to www.grohe.co.uk





GROHE INFRARED MIXER

EUROPLUS E



36 207 001

Infrared basin mixer (6 V)
with mixing device

36 236 001

with mixing device and waste set

36 208 001

without mixing device

36 015 001*

Infrared basin mixer (230 V)
with mixing device

36 016 001*

without mixing device

36 387 000

Infrared basin mixer
with power box and mixing device



36 240 001

Infrared basin thermostat (6 V)
wall-mounted, projection: 232 mm

36 239 001

projection: 264 mm



36 210 000

Socket for Europlus E, 25 mm

36 209 000

Hidden mixing device for Europlus E

Adjust settings via:



GROHE
sensor



GROHE
remote control



GROHE
EcoJoy



GROHE
StarLight®



GROHE
CoolTouch®



GROHE
TurboStat®



LongLife
Battery



SmartFix



TouchFree

* Additionally requires transformer 36 338 000

EUROSMART CE



36 327 001
Infrared basin mixer (6 V)
with mixing device
36 331 001
with mixing device and waste set
36 330 001
with hidden mixing device

36 325 001*
Infrared basin mixer (230 V)
with mixing device

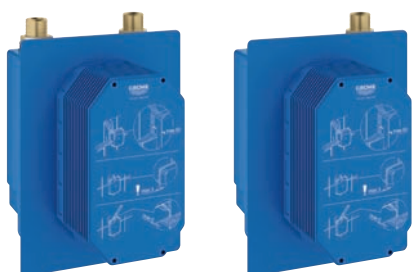
36 421 000*
L-Size
Infrared basin mixer (230 V)
with mixing device
36 422 000
6V
Height mousseur 150 mm



36 335 SD0
Infrared basin mixer (230 V)
wall-mounted, projection: 172 mm
36 334 SD0
projection: 232 mm
Brass SuperSteel spout
stainless steel escutcheon
for concealed box 36 336 000 or 36 337 000

36 315 000
Infrared basin mixer (230 V)
wall-mounted, with mixing device
projection: 172 mm
36 376 000
projection: 232 mm
Chrome spout and escutcheon
for concealed box 36 339 000

36 386 001
Infrared basin mixer with power box
and mixing device



36 336 000
Concealed box with integrated
pre-adjustable thermostatic mixer
36 337 000
Concealed box for cold or premixed water
for 36 335 SD0 / 36 334 SD0

36 339 000
Concealed box for connecting
to mixing device
for 36 315 000 / 36 376 000

36 333 000
Infrared basin thermostat (6 V)
wall-mounted, projection: 255 mm
36 332 000
projection: 287 mm

Adjust settings via:



GROHE sensor



GROHE remote control



GROHE EcoJoy



GROHE StarLight®



GROHE CoolTouch®



GROHE TurboStat®



LongLife Battery



SmartFix



TouchFree

* Additionally requires transformer 36 338 000

GROHE INFRARED MIXER

EUROECO CE



36 271 000
Infrared basin mixer (6 V)
without mixing device



36 269 000*
Infrared basin mixer (230 V)
without mixing device



36 384 000
Infrared basin mixer with power box
without mixing device



36 274 000
Infrared basin mixer (6 V)
wall-mounted
without mixing device



36 273 000
Infrared basin mixer (230 V)
wall-mounted, without mixing device
projection: 172 mm
Chrome spout and escutcheon
for concealed box 36 336 000 or 36 337 000



36 336 000
Concealed box with integrated
pre-adjustable thermostatic mixer



36 337 000
Concealed box for cold or premixed water

Adjust settings via:



GROHE sensor



GROHE remote control



GROHE EcoJoy



GROHE StarLight®



GROHE CoolTouch®



LongLife Battery



SmartFix



TouchFree

* Additionally requires transformer 36 338 000

GROHE INFRARED PRODUCTS FOR URINALS

TECTRON CONCEALED URINAL



37 324 001
Tectron Skate infrared control (6 V)
37 324 SD1
stainless steel



37 337 001
Tectron Surf infrared control (6 V)



38 787 000
Concealed box for urinal (6 V)



37 321 001
Tectron Skate infrared control (230 V)
37 321 SD1
stainless steel
37 321 SH1
alpine white



37 336 001
Tectron Surf infrared control (230 V)



37 338 000
Concealed box
for urinal 6 V oder 230 V

Adjust settings via:



GROHE
sensor



GROHE
remote control



GROHE
StarLight®



LongLife
Battery



TouchFree

GROHE INFRARED PRODUCTS FOR WCS



37 419 000

Tectron Skate infrared WC plate
for flushing cistern (230 V)
with additional manual actuation

37 419 SD0
stainless steel



38 698 SD1

Tectron Skate infrared WC plate
for flushing cistern (230 V)
stainless steel



38 699 001

Tectron Surf infrared WC plate
for flushing cistern (230 V)



38 393 SD1

Tectron Skate infrared WC plate
for flush valve (230 V)
stainless steel

Adjust settings via:



GROHE
sensor



GROHE
remote control



GROHE
StarLight®



EasyConnect



TouchFree

GROHE INFRARED MIXER

WITH BLUETOOTH COMMUNICATION



36 411 000*
Europlus E
infrared basin mixer (230 V)
with mixing device for app



36 413 000*
Eurosmart Cosmopolitan E
infrared basin mixer (230 V)
with mixing device for app



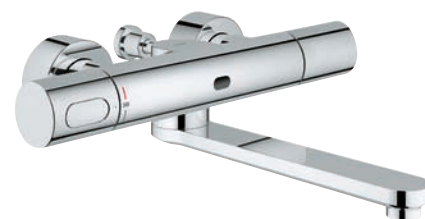
36 409 000*
Euroeco Cosmopolitan E
infrared basin mixer (230 V)
without mixing device for app



36 410 000
Eurosmart Cosmopolitan E
infrared basin mixer (230 V)
without mixing device for app
projection: 172 mm
for concealed box 36 336 000 and 36 337 000



36 412 000
Eurosmart Cosmopolitan E
infrared basin mixer (230 V)
wall-mounted, with mixing device for app,
projection: 172 mm
for concealed box 36 339 000



36 414 000
Eurosmart Cosmopolitan E
infrared basin thermostat (230 V)
wall-mounted, for app, projection: 287 mm
39 383 000
Rough-in for 36 414 000



36 336 000
Concealed box with integrated
pre-adjustable thermostatic mixer
for 36 410 000



36 337 000
Concealed box for cold or premixed water
for 36 412 000



36 339 000
Concealed box for connecting
to mixing device
for 36 412 000

Adjust settings via:



GROHE
sensor



GROHE
remote control



GROHE
Bluetooth



GROHE
EcoJoy



GROHE
StarLight®



GROHE
CoolTouch®



GROHE
TurboStat®



SmartFix



TouchFree

* Additionally requires transformer 36 338 000

GROHE SHOWER AND FLUSHING SYSTEMS

WITH BLUETOOTH COMMUNICATION SHOWER



36 415 000
Eurosmart Cosmopolitan E
infrared shower control
wall-mounted, (230 V)
without mixing device for app
for concealed box 36 416 000



36 416 000
Concealed box with thermostatic mixer

WC



37 504 000
Tectron Skate
infrared WC plate
for flushing cistern (230 V)
with additional manual actuation for app



37 505 SD0
Tectron Skate
infrared WC plate
for flushing cistern (230 V)
for app
stainless steel

URINAL



37 503 000
Tectron Skate
infrared control (230 V)
for app



37 338 000
Concealed box for urinal 6 V or 230 V



39 369 000
Temperature sensor (230 V)
for app
to be combined with Rapid SL 39 376 000

Adjust settings via:



GROHE
sensor



GROHE
remote control



GROHE
Bluetooth



GROHE
StarLight®



EasyConnect



TouchFree

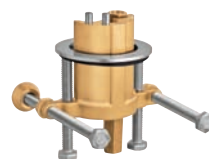
GROHE ACCESSORIES



36 407 001
Remote control for all GROHE
infrared fittings
incl. demo mode



36 133 000
Theft-proof mousseur
with key 7,5 - 9,0 l/min at 3 bar



36 276 000
Rotation lock for Eurosmart Cosmopolitan E



34 487 000
Grotherm Micro under-basin thermostat



45 704 000
Connection set Grotherm Micro
for fittings without mixing



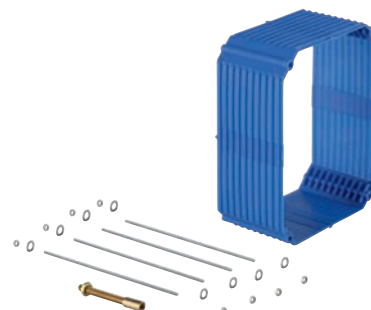
47 533 000
Connection set Grotherm Micro
for fittings with mixing



36 338 000
Switch-mode power supply
for concealed socket



36 340 000
Extension cable, 3 m
36 341 000
10 m



38 896 000
Extension set, 50 mm
for 37 338 000 and 38 787 000

GROHE Ltd
World Business Centre 2
Newall Road | London Heathrow Airport
Hounslow | Middlesex | TW6 2SF
Tel.: 0871 200 3414
Fax: 0871 200 3415



© 08/2016 – Copyright by GROHE

DISCOVER THE WORLD OF GROHE AT WWW.GROHE.CO.UK



Follow us



YouTube

PART OF **LIXIL**