

The Grohe logo, consisting of the word "GROHE" in a sans-serif font above three wavy lines representing water.

grohe.com

*Pure Freude
an Wasser*

The Grohe logo, consisting of the word "GROHE" in a sans-serif font above three wavy lines representing water.

PERFECT **MATCH**

INTRODUCING GROHE CERAMICS

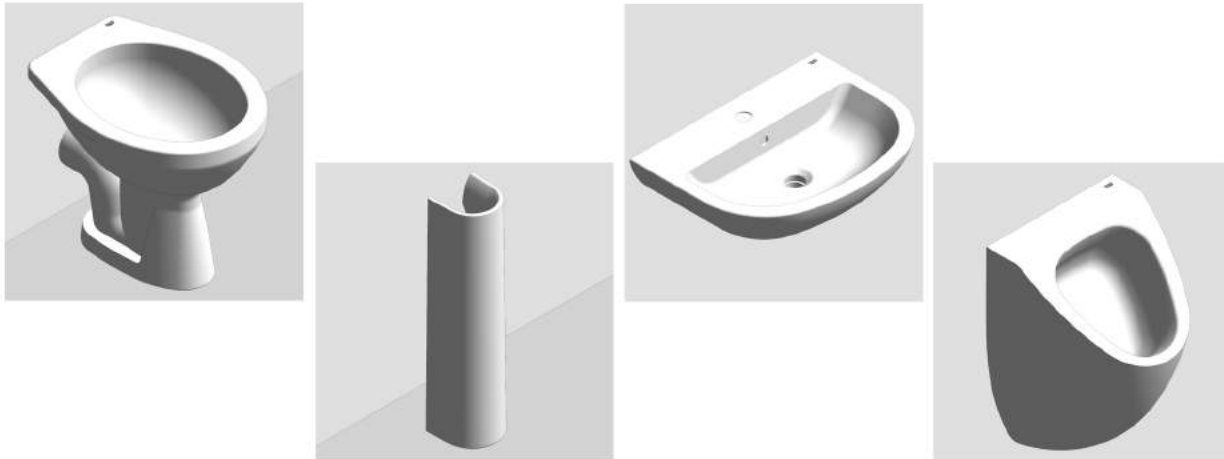
Revit Component User Guide

Powered by **bimstore.co.uk**

Grohe - Ceramic BIM

Every professional project needs a versatile design line that fits harmoniously into every bathroom interior. With its soft and round forms, Grohe Ceramics is the perfect choice for the bathroom interiors of hotels, offices and residential housing. Its contemporary style makes it the perfect solution for your project, suiting every taste.

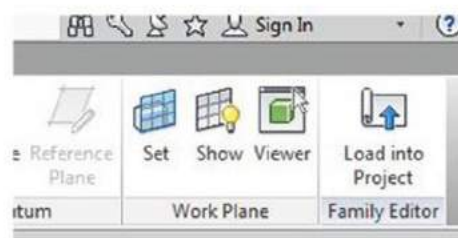
A set of BIM components are available for download from www.bimstore.co.uk which cater for the various ceramic products provided from Grohe.



Loading the Grohe ceramic products in to your project

The Grohe ceramic products are modelled as plumbing fixture families that can be simply loaded in to your project. This can be done using the following method:

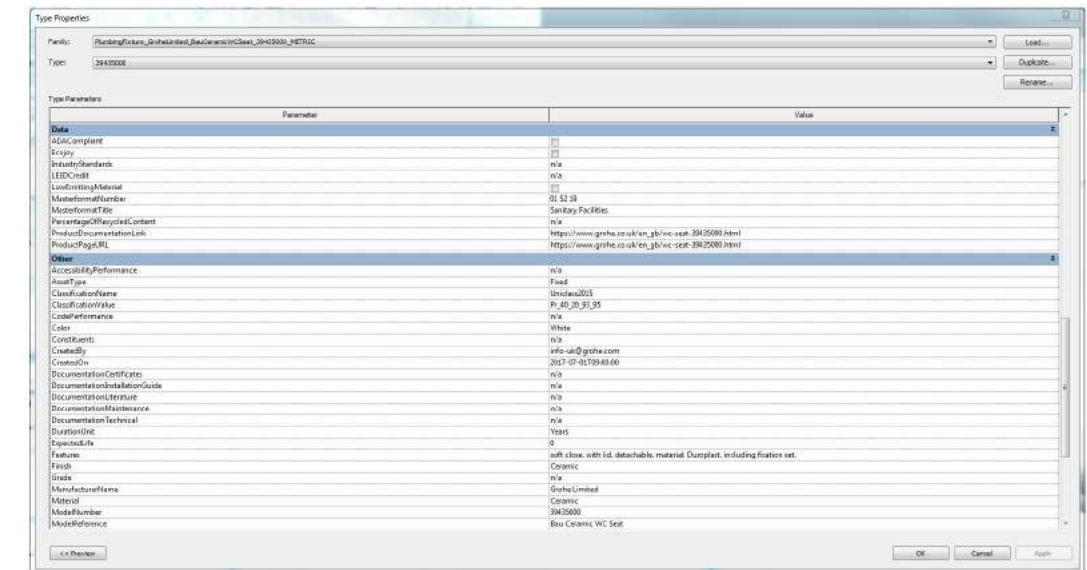
1. Open your Revit project file (.rvt), and navigate to a floor plan view.
2. Now open the required Grohe component (.rfa) in the zip folder you have just downloaded from bimstore. Use the Revit ribbon at the top of the screen to navigate to the 'family editor' and click the 'Load into Project' button.



3. The component can now be placed in your project and can also be selected from the 'components' drop down on the main Revit ribbon.

Using the Grohe ceramic products additional features

To access the data embedded into the component, simply select the desired component and click 'Edit Type' button at the head of the 'Properties' dialogue box (typically located on the left hand side of the screen). All of the product specific information regarding the Grohe product you have selected is now displayed and can be schedules including URL links direct to Grohe for documentation and product links.



All of the GROHE ceramic components have been created as generic model families this allows the user to simply place the component to the level they wish and then adjust the offset from level. Once positioned, with the fixture selected the connection points will appear to allow the user to connect the fixture to the MEP system.

The components also include render quality materials to allow the user to produce high quality images as illustrated to the right.



Other Notes

You can add the Grohe components to your company template file, they will then be available without loading when starting a new project.

Revisions

Version 1.0 - First Issue



bimstore.co.uk

Spaceworks
Benton Park Road
Newcastle Upon Tyne
NE7 7LX
T: +44 (0)191 223 6600
E: info@bimstore.co.uk